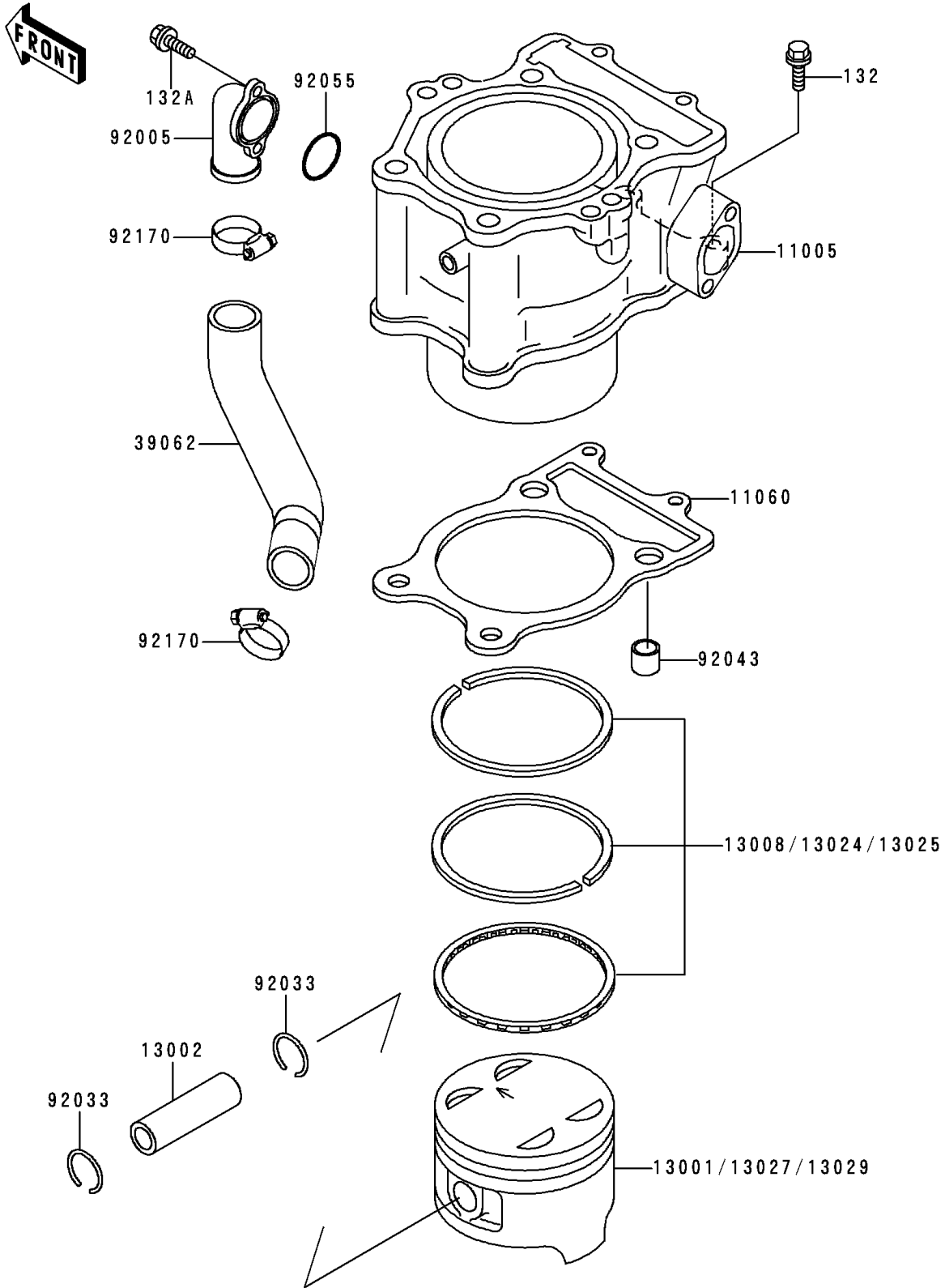


1999 Bayou 400 4X4 PARTS DIAGRAM

Cylinder/Piston(s)

E 1120



1999 Bayou 400 4X4 PARTS LIST

Cylinder/Piston(s)

| ITEM NAME | PART NUMBER | QUANTITY |
|---|-------------|----------|
| BOLT-FLANGED-SMALL (Ref # 132) | 132G0625 | 2 |
| BOLT-FLANGED-SMALL (Ref # 132A) | 132J0616 | 2 |
| CYLINDER-ENGINE (Ref # 11005) | 11005-1673 | 1 |
| GASKET,CYLINDER BASE (Ref # 11060) | 11060-1709 | 1 |
| PISTON-ENGINE,STD (Ref # 13001) | 13001-1362 | 1 |
| PIN-PISTON (Ref # 13002) | 13002-1056 | 1 |
| RING-SET-PISTON,STD (Ref # 13008) | 13008-1142 | 1 |
| RING-SET-PISTON LL,O/S 1.00 (Ref # 13024) | 13024-1090 | 1 |
| RING-SET-PISTON L,O/S 0.50 (Ref # 13025) | 13025-1114 | 1 |
| PISTON-ENGINE LL,O/S 1.00 (Ref # 13027) | 13027-1167 | 1 |
| PISTON-ENGINE L,O/S 0.50 (Ref # 13029) | 13029-1209 | 1 |
| HOSE-COOLING,PUMP-CYLINDER (Ref # 39062) | 39062-1483 | 1 |
| FITTING,CYLINDER (Ref # 92005) | 92005-1145 | 1 |
| RING-SNAP (Ref # 92033) | 92033-1188 | 2 |
| PIN,11X14X12.3 (Ref # 92043) | 92043-1266 | 2 |
| RING-O (Ref # 92055) | 92055-091 | 1 |
| CLAMP (Ref # 92170) | 92170-1497 | 2 |