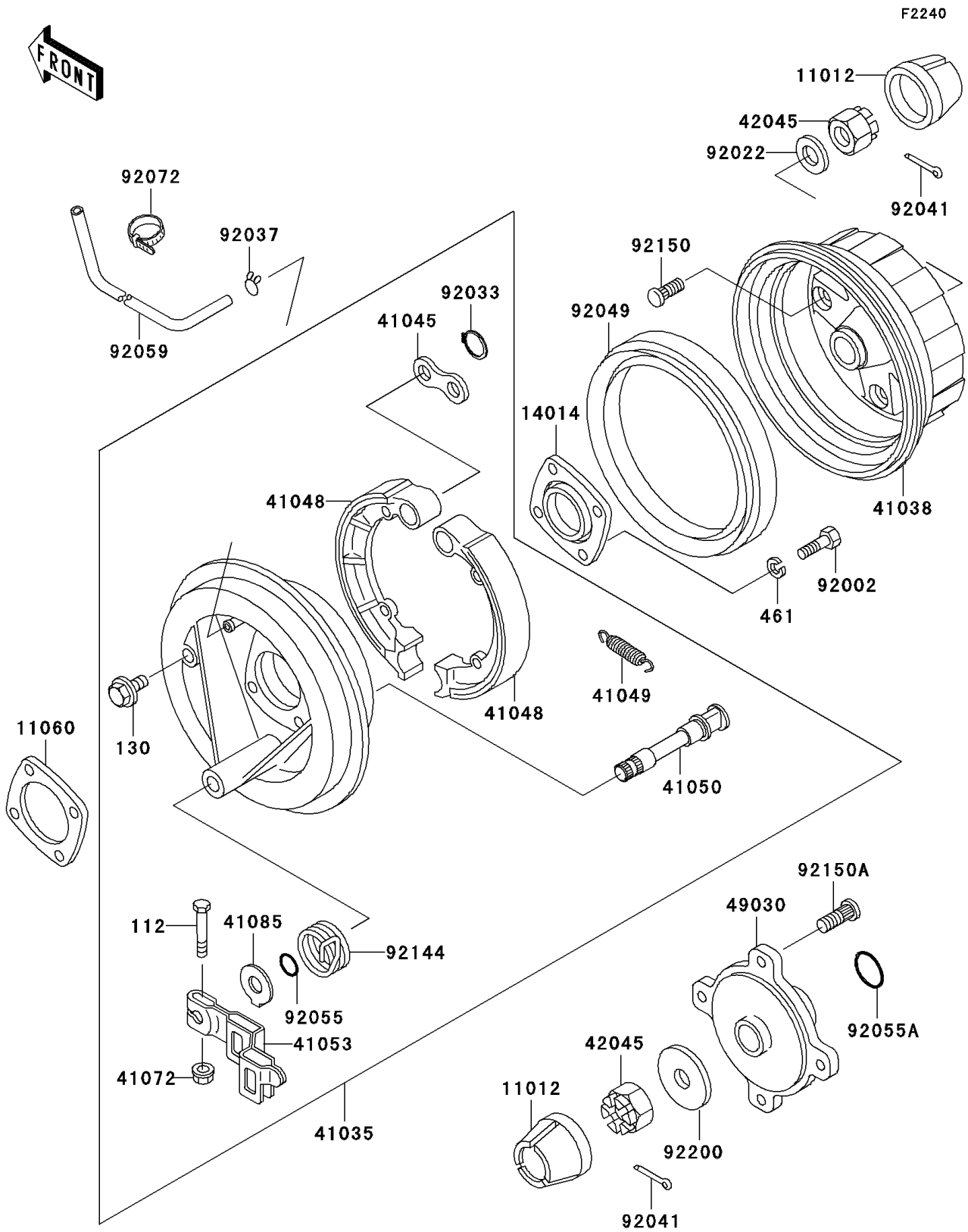


1999 Bayou 300 4X4 PARTS DIAGRAM

Rear Hub



1999 Bayou 300 4X4 PARTS LIST

Rear Hub

ITEM NAME	PART NUMBER	QUANTITY
BOLT-UPSET (Ref # 112)	112H0640	1
BOLT-FLANGED,10X12 (Ref # 130)	130B1012	1
WASHER-SPRING,10MM (Ref # 461)	461F1000	4
CAP,WHEEL (Ref # 11012)	11012-1969	2
GASKET (Ref # 11060)	11060-1561	1
PLATE-POSITION (Ref # 14014)	14014-1072	1
PANEL-ASSY-BRAKE,RR,RH (Ref # 41035)	41035-1305	1
DRUM,REAR BRAKE (Ref # 41038)	41038-1202	1
WASHER (Ref # 41045)	41045-006	1
SHOE-BRAKE (Ref # 41048)	41048-1082	2
SPRING,BRAKE SHOE (Ref # 41049)	41049-012	2
CAM-BRAKE (Ref # 41050)	41050-1077	1
LEVER-BRAKE CAM (Ref # 41053)	41053-1078	1
NUT,6MM (Ref # 41072)	41072-007	1
INDICATOR (Ref # 41085)	41085-1062	1
NUT,CASTLE,18MM (Ref # 42045)	42045-018	2
HUB,RR,LH (Ref # 49030)	49030-1104	1
BOLT,10X30 (Ref # 92002)	92002-1918	4
WASHER,18.3X34X4.5 (Ref # 92022)	92022-1658	1
RING-SNAP,15MM (Ref # 92033)	92033-1250	2
CLAMP,TUBE (Ref # 92037)	92037-147	1
COTTER,4.0X35 (Ref # 92041)	92041-1053	2
SEAL-OIL,SD07 190 225 16 NS (Ref # 92049)	92049-1312	1
RING-O,ID=16.4 (Ref # 92055)	92055-1376	1
RING-O,ID=24.5 (Ref # 92055A)	92055-1459	1
TUBE,4.7X9.5X1240 (Ref # 92059)	92059-1968	1
BAND,L=123 (Ref # 92072)	92072-030	2
SPRING (Ref # 92144)	92144-1365	1
BOLT,10MM (Ref # 92150)	92150-1110	4

1999 Bayou 300 4X4 PARTS LIST

Rear Hub

ITEM NAME	PART NUMBER	QUANTITY
BOLT (Ref # 92150A)	92150-1289	4
WASHER,18.5X52X4.5 (Ref # 92200)	92200-1474	1