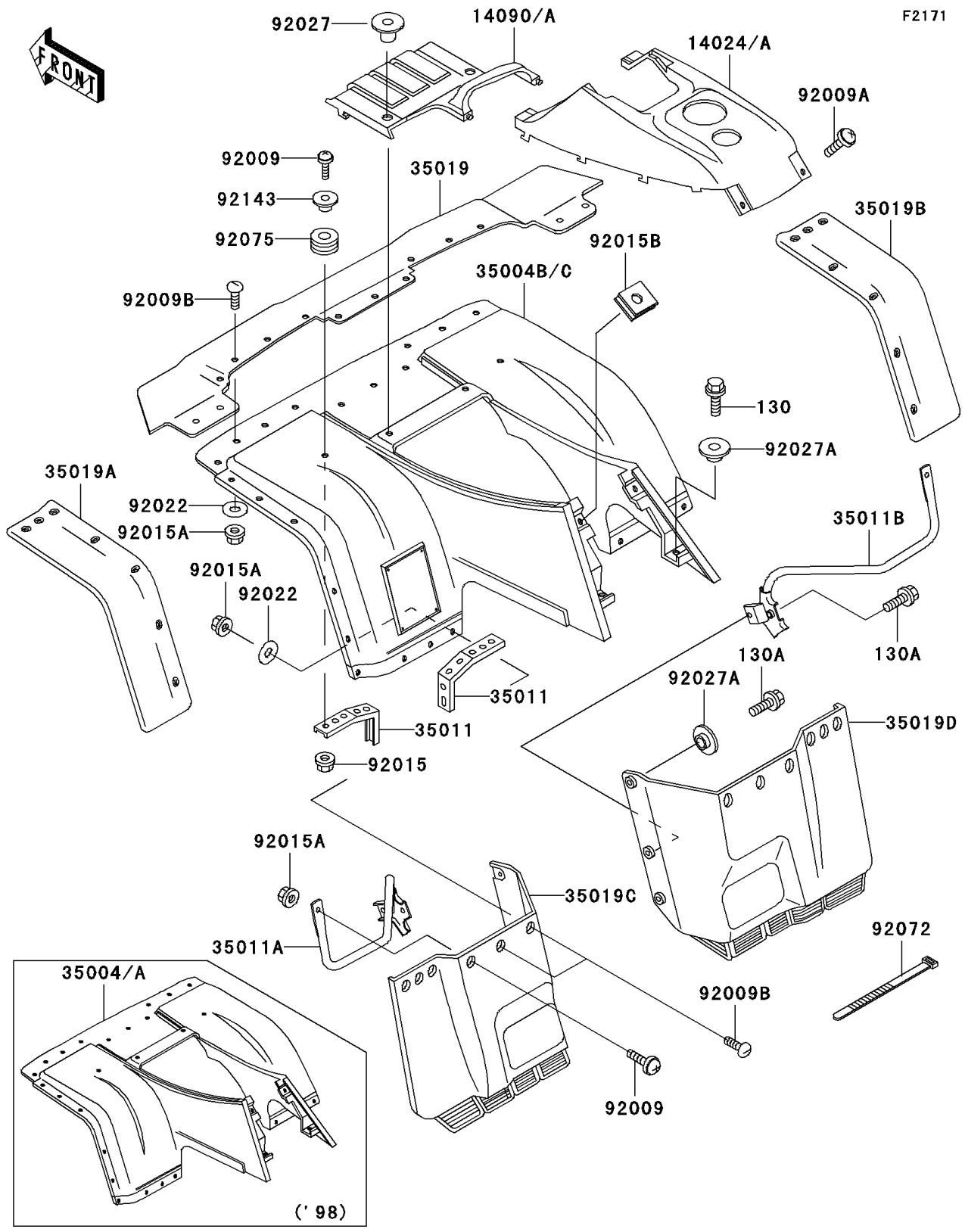


# 2002 Bayou 300 4X4 PARTS DIAGRAM

Front Fender(s)



## 2002 Bayou 300 4X4 PARTS LIST

### Front Fender(s)

| ITEM NAME                                   | PART NUMBER   | QUANTITY |
|---|---------------|----------|
| BOLT-FLANGED,6X16 (Ref # 130)               | 130C0616      | 2        |
| BOLT-FLANGED,6X18 (Ref # 130A)              | 130J0618      | 6        |
| COVER,FRONT FENDER,RR,H.GREEN (Ref # 14024) | 14024-1657-6A | 1        |
| COVER,FRONT FENDER,RR,F.RED (Ref # 14024A)  | 14024-1657-6L | 1        |
| COVER,FRONT FENDER,FR,H.GREEN (Ref # 14090) | 14090-1656-6A | 1        |
| COVER,FRONT FENDER,FR,F.RED (Ref # 14090A)  | 14090-1656-6L | 1        |
| FENDER-FRONT,H.GREEN (Ref # 35004B)         | 35004-1381-6A | 1        |
| FENDER-FRONT,F.RED (Ref # 35004C)           | 35004-1381-6L | 1        |
| STAY,FRONT FENDER,UPP (Ref # 35011)         | 35011-1420    | 2        |
| STAY,FR FENDER,LH,LWR FLAP (Ref # 35011A)   | 35011-1600    | 1        |
| STAY,FR FENDER,RH,LWR FLAP (Ref # 35011B)   | 35011-1601    | 1        |
| FLAP,FR,BLACK (Ref # 35019)                 | 35019-1291-6Z | 1        |
| FLAP,FR,SIDE,LH,BLACK (Ref # 35019A)        | 35019-1292-6Z | 1        |
| FLAP,FR,SIDE,RH,BLACK (Ref # 35019B)        | 35019-1293-6Z | 1        |
| FLAP,FR,LWR,LH,BLACK (Ref # 35019C)         | 35019-1294-6Z | 1        |
| FLAP,FR,LWR,RH,BLACK (Ref # 35019D)         | 35019-1295-6Z | 1        |
| SCREW,6X22,BLACK (Ref # 92009)              | 92009-1256    | 10       |
| SCREW,6X14 (Ref # 92009A)                   | 92009-1288    | 2        |
| SCREW,6X16 (Ref # 92009B)                   | 92009-1621    | 29       |
| NUT,FLANGED,6MM,BLACK (Ref # 92015)         | 92015-1233    | 2        |
| NUT,LOCK,FLANGED,6MM (Ref # 92015A)         | 92015-1675    | 37       |
| NUT,CLAMP,6MM (Ref # 92015B)                | 92015-1678    | 2        |
| WASHER,6.5X16X1.0 (Ref # 92022)             | 92022-1093    | 37       |
| COLLAR,L=14 (Ref # 92027)                   | 92027-1134    | 2        |
| COLLAR,L=4.7 (Ref # 92027A)                 | 92027-1964    | 4        |
| BAND,L=149 (Ref # 92072)                    | 92072-031     | 2        |
| DAMPER,CASE (Ref # 92075)                   | 92075-222     | 2        |
| COLLAR,L=9.6 (Ref # 92143)                  | 92143-1016    | 2        |