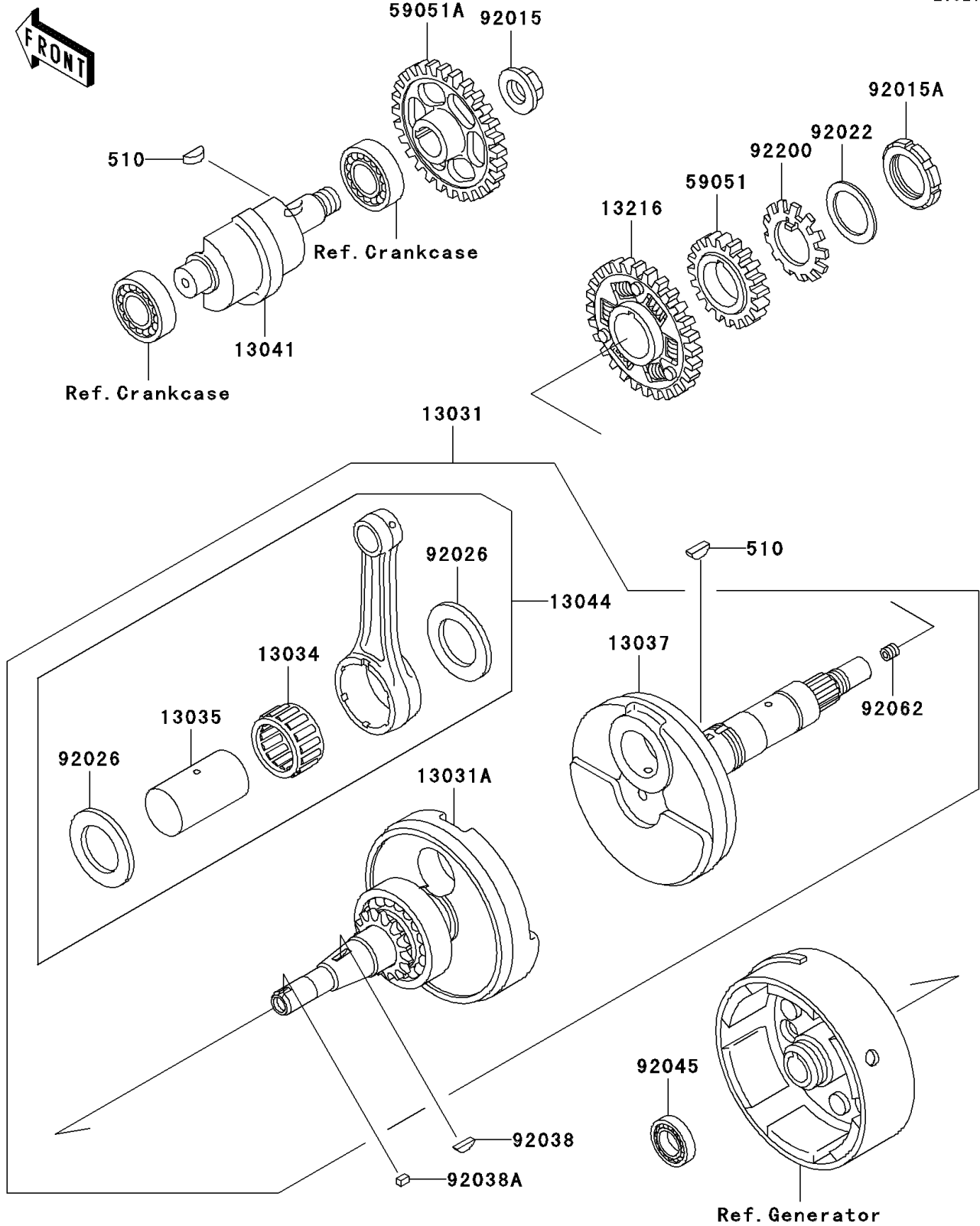


1999 Bayou 300 4X4 PARTS DIAGRAM

Crankshaft

E1321



1999 Bayou 300 4X4 PARTS LIST

Crankshaft

| ITEM NAME | PART NUMBER | QUANTITY |
|--|-------------|----------|
| KEY-WOODRUFF (Ref # 510) | 510A5100 | 2 |
| CRANKSHAFT-COMP (Ref # 13031) | 13031-1388 | 1 |
| CRANKSHAFT-COMP,LH (Ref # 13031A) | 13031-1402 | 1 |
| BEARING-BIG END,PK32X43X22.4 (Ref # 13034) | 13034-1061 | 1 |
| PIN-CRANK (Ref # 13035) | 13035-1067 | 1 |
| CRANKSHAFT,RH (Ref # 13037) | 13037-1499 | 1 |
| BALANCER (Ref # 13041) | 13041-1066 | 1 |
| SET-CONNECTING ROD (Ref # 13044) | 13044-5066 | 1 |
| GEAR-COMP,BALANCER (Ref # 13216) | 13216-1072 | 1 |
| GEAR-SPUR,OIL PUMP,36T (Ref # 59051) | 59051-1140 | 1 |
| GEAR-SPUR,BALANCER,44T (Ref # 59051A) | 59051-1141 | 1 |
| NUT,16MM (Ref # 92015) | 92015-1465 | 1 |
| NUT,PUMP GEAR,30MM (Ref # 92015A) | 92015-1511 | 1 |
| WASHER,30.3X38X0.5 (Ref # 92022) | 92022-1987 | 1 |
| SPACER,32X51.5X1.2 (Ref # 92026) | 92026-1232 | 2 |
| KEY,WOODRUFF (Ref # 92038) | 92038-001 | 1 |
| KEY,SUNK (Ref # 92038A) | 92038-1051 | 1 |
| BEARING-BALL,6903C3 (Ref # 92045) | 92045-1266 | 1 |
| NOZZLE (Ref # 92062) | 92062-1056 | 1 |
| WASHER,PUMP GEAR (Ref # 92200) | 92200-1203 | 1 |