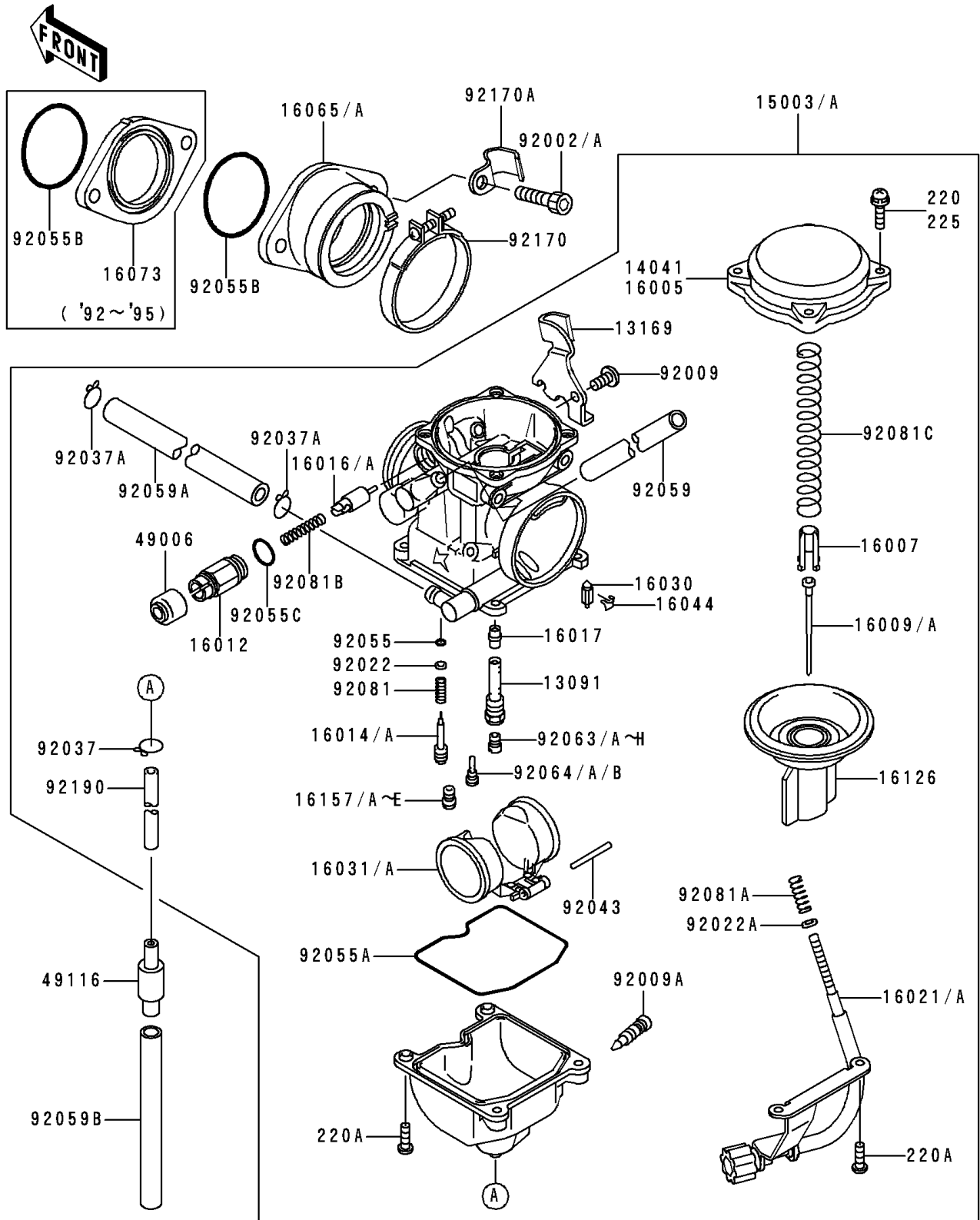


1993 Bayou 300 PARTS DIAGRAM

Carburetor

E1611



1993 Bayou 300 PARTS LIST

Carburetor

| ITEM NAME | PART NUMBER | QUANTITY |
|--|-------------|----------|
| HOLDER,NEEDLE JET (Ref # 13091) | 13091-1259 | 1 |
| PLATE,THROTTLE CABLE (Ref # 13169) | 13169-1197 | 1 |
| CARBURETOR-ASSY (Ref # 15003) | 15003-1076 | 1 |
| TOP-CHAMBER,MIXING (Ref # 16005) | 16005-1056 | 1 |
| SEAT-SPRING,THROTTLE VALVE (Ref # 16007) | 16007-1120 | 1 |
| NEEDLE-JET,N36X (Ref # 16009) | 16009-1516 | 1 |
| CAP-STARTER PLUNGER (Ref # 16012) | 16012-1055 | 1 |
| SCREW-PILOT AIR (Ref # 16014) | 16014-1054 | 1 |
| PLUNGER,STARTER (Ref # 16016) | 16016-1065 | 1 |
| JET-NEEDLE,#6 (Ref # 16017) | 16017-1270 | 1 |
| SCREW-THROTTLE STOP (Ref # 16021) | 16021-1115 | 1 |
| VALVE-FLOAT (Ref # 16030) | 16030-1007 | 1 |
| FLOAT (Ref # 16031) | 16031-1056 | 1 |
| CLAMP,FLOAT VALVE (Ref # 16044) | 16044-007 | 1 |
| HOLDER-CARBURETOR (Ref # 16065) | 16065-1177 | 1 |
| INSULATOR (Ref # 16073) | 16073-1074 | 1 |
| VALVE,VACUUM (Ref # 16126) | 16126-1199 | 1 |
| JET-STARTER,#58 (Ref # 16157) | 16157-1057 | 1 |
| JET-STARTER,#60 (Ref # 16157A) | 16157-1058 | 1 |
| JET-STARTER,#62 (Ref # 16157B) | 16157-1059 | 1 |
| BOOT,STARTER PLUNGER (Ref # 49006) | 49006-1165 | 1 |
| VALVE-ASSY (Ref # 49116) | 49116-1126 | 1 |
| BOLT,SOCKET,6X25 (Ref # 92002) | 92002-1093 | 2 |
| SCREW,5X10 (Ref # 92009) | 92009-1365 | 1 |
| SCREW,DRAIN,M6X0.75 (Ref # 92009A) | 92009-1551 | 1 |
| WASHER,PLAIN (Ref # 92022) | 92022-1003 | 1 |
| WASHER,PLAIN,STOP SPRING (Ref # 92022A) | 92022-1480 | 1 |
| CLAMP,TUBE (Ref # 92037) | 92037-1201 | 1 |
| CLAMP,TUBE (Ref # 92037A) | 92037-1531 | 2 |

1993 Bayou 300 PARTS LIST

Carburetor

| ITEM NAME | PART NUMBER | QUANTITY |
|---|-------------|----------|
| PIN,FLOAT (Ref # 92043) | 92043-1207 | 1 |
| RING-O,PILOT ADJUST (Ref # 92055) | 92055-1002 | 1 |
| RING-O,FLOAT CHAMBER (Ref # 92055A) | 92055-1222 | 1 |
| RING-O,38MM (Ref # 92055B) | 92055-1295 | 2 |
| RING-O,STARTER PLUNGER (Ref # 92055C) | 92055-1416 | 1 |
| TUBE,6.5X9.5X350 (Ref # 92059) | 92059-1237 | 1 |
| TUBE,6.5X11.5X150 (Ref # 92059A) | 92059-1463 | 1 |
| TUBE,7X10X100 (Ref # 92059B) | 92059-1736 | 1 |
| JET-MAIN,#135 (Ref # 92063) | 92063-1014 | 1 |
| JET-MAIN,2ND,#125 (Ref # 92063B) | 92063-1069 | 1 |
| JET-MAIN,2ND,#128 (Ref # 92063E) | 92063-1074 | 1 |
| JET-MAIN,#130 (Ref # 92063F) | 92063-1075 | 1 |
| JET-MAIN,#132 (Ref # 92063H) | 92063-1076 | 1 |
| JET-PILOT,#35 (Ref # 92064) | 92064-1101 | 1 |
| JET-PILOT,#38 (Ref # 92064A) | 92064-1119 | 1 |
| JET-PILOT,#40 (Ref # 92064B) | 92064-1125 | 1 |
| SPRING,PILOT ADJUST SCREW (Ref # 92081) | 92081-1002 | 1 |
| SPRING,THROTTLE STOP SCREW (Ref # 92081A) | 92081-1617 | 1 |
| SPRING,PLUNGER (Ref # 92081B) | 92081-1720 | 1 |
| SPRING,VACUUM VALVE (Ref # 92081C) | 92081-1775 | 1 |
| CLAMP (Ref # 92170) | 92170-1438 | 1 |
| CLAMP (Ref # 92170A) | 92170-1552 | 1 |
| TUBE,4.5X8X330 (Ref # 92190) | 92190-1557 | 1 |
| SCREW-PAN-CROS (Ref # 220A) | 220D0414 | 4 |
| SCREW-PAN-WSP-CROS (Ref # 225) | 225C0418 | 4 |