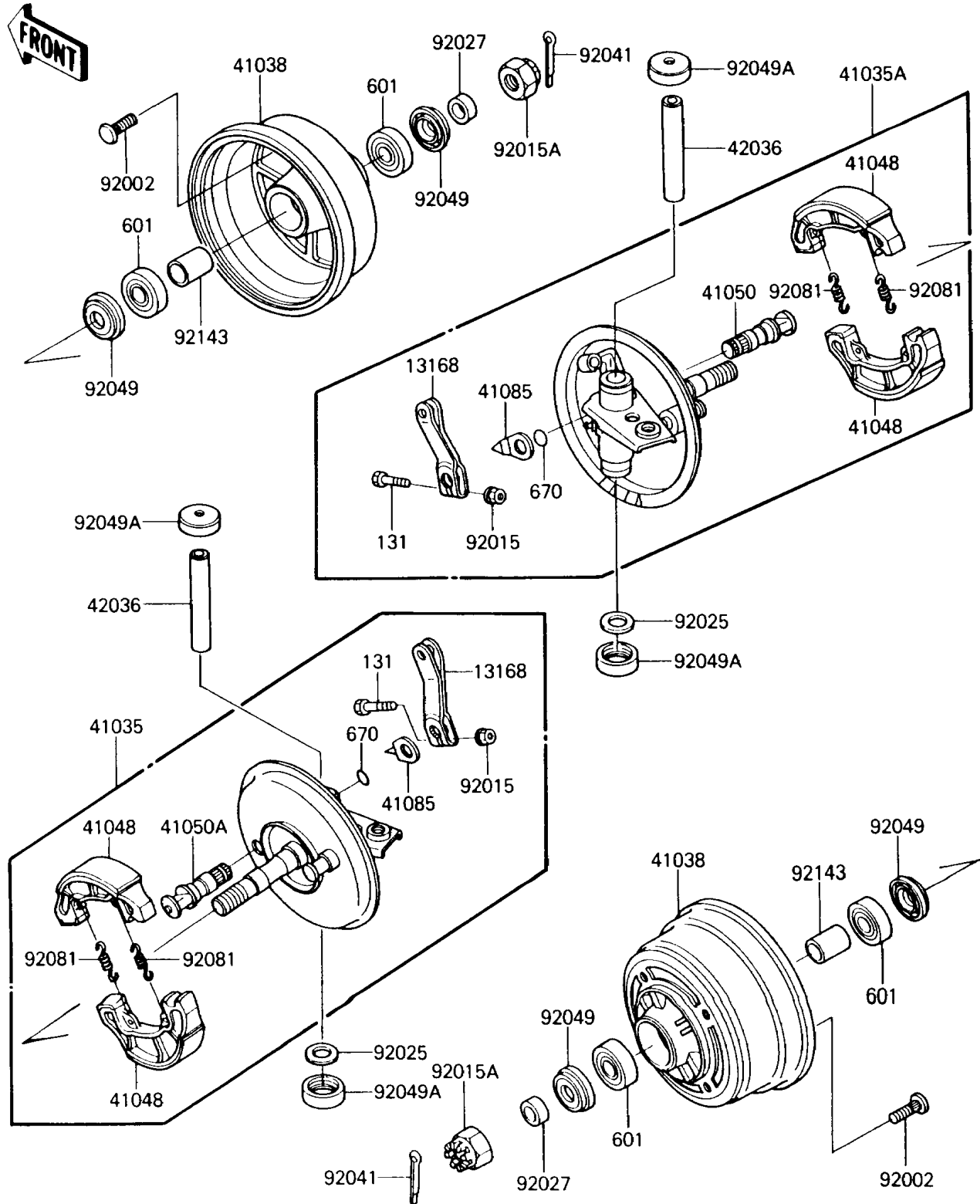


1986 Bayou 185 PARTS DIAGRAM

Front Hub

F2230-0138



1986 Bayou 185 PARTS LIST

Front Hub

| ITEM NAME | PART NUMBER | QUANTITY |
|--------------------------------------|-------------|----------|
| LEVER,BRAKE CAM (Ref # 13168) | 13168-1317 | 2 |
| PANEL-ASSY-BRAKE,LH (Ref # 41035) | 41035-1204 | 1 |
| PANEL-ASSY-BRAKE,RH (Ref # 41035A) | 41035-1205 | 1 |
| DRUM,FR BRAKE (Ref # 41038) | 41038-1165 | 2 |
| SHOE-BRAKE (Ref # 41048) | 41048-1017 | 4 |
| CAM-BRAKE,RH (Ref # 41050) | 41050-1066 | 1 |
| CAM-BRAKE,LH (Ref # 41050A) | 41050-1068 | 1 |
| INDICATOR (Ref # 41085) | 41085-1056 | 2 |
| SLEEVE, KNUCKLE,L=99.6 (Ref # 42036) | 42036-1141 | 2 |
| BOLT,10X30 (Ref # 92002) | 92002-1388 | 8 |
| NUT,FLANGED,6MM,BLACK (Ref # 92015) | 92015-1237 | 2 |
| NUT,16MM (Ref # 92015A) | 92015-1455 | 2 |
| SHIM,18X28.5X0.3 (Ref # 92025) | 92025-1678 | 2 |
| COLLAR,16.0X22X9.5 (Ref # 92027) | 92027-1815 | 2 |
| COTTER,4.0X35 (Ref # 92041) | 92041-1053 | 2 |
| SEAL-OIL (Ref # 92049) | 92049-1197 | 4 |
| SEAL-OIL,KNUCKLE (Ref # 92049A) | 92049-1198 | 4 |
| SPRING,BRAKE SHOE (Ref # 92081) | 92081-1985 | 4 |
| COLLAR,17.2X22.2X31.5 (Ref # 92143) | 92027-1988 | 2 |
| BOLT-FLANGED (Ref # 131) | 131H0635 | 2 |
| BEARING-BALL,#6203UU (Ref # 601) | 601A6203UU | 4 |
| O RING,15MM (Ref # 670) | 670B2015 | 2 |