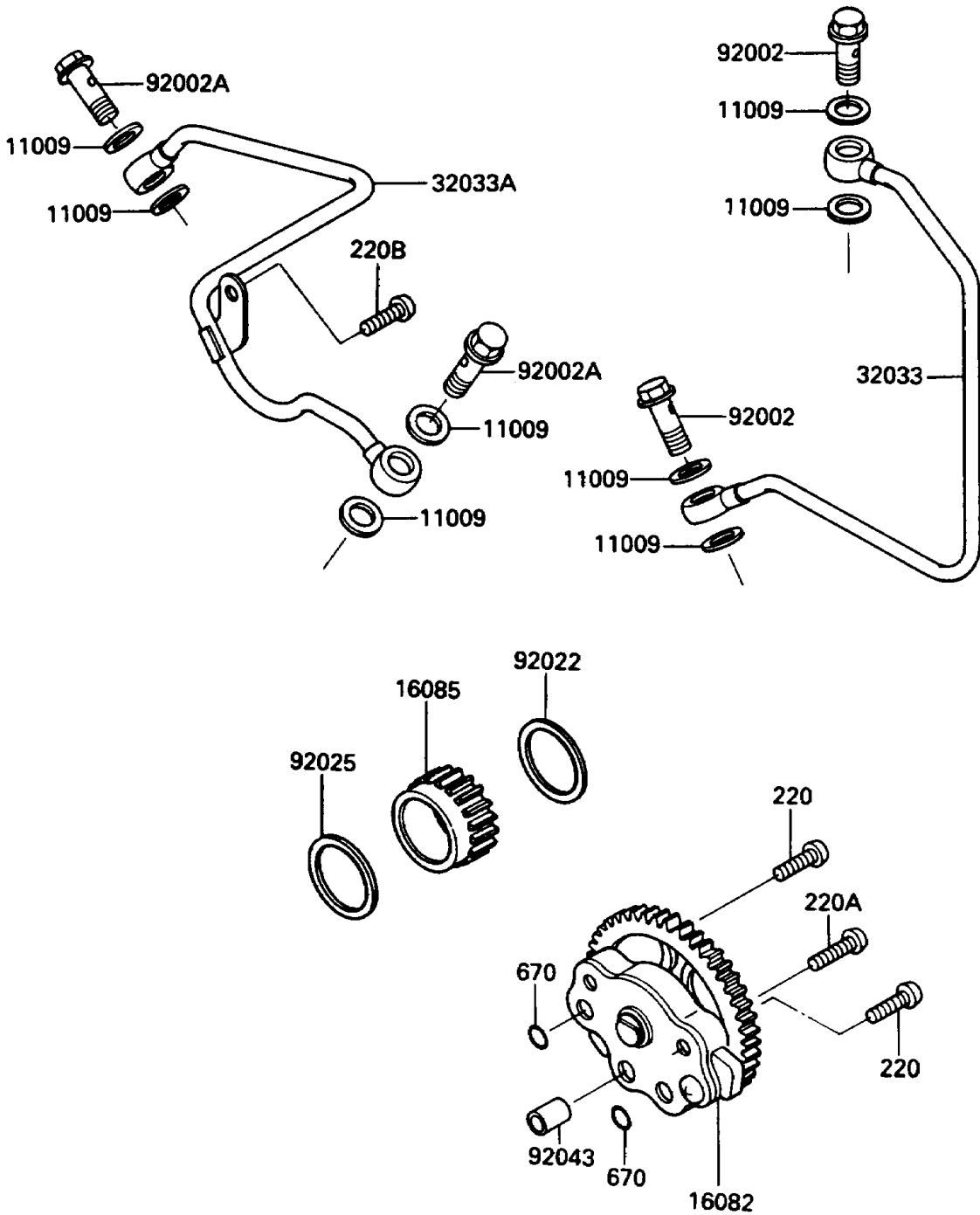


# 1988 Bayou 185 PARTS DIAGRAM

Oil Pump/Oil Filter

E1710-0071



# 1988 Bayou 185 PARTS LIST

## Oil Pump/Oil Filter

| ITEM NAME                                | PART NUMBER | QUANTITY |
|--|-------------|----------|
| GASKET,OIL PIPE,8.2X14X1.0 (Ref # 11009) | 11009-1344  | 8        |
| PUMP-ASSY-OIL (Ref # 16082)              | 16082-1055  | 1        |
| GEAR,OIL PUMP,22T (Ref # 16085)          | 16085-1133  | 1        |
| PIPE,CYLINDER HEAD (Ref # 32033)         | 32033-1221  | 1        |
| PIPE,TRANSMISSION (Ref # 32033A)         | 32033-1222  | 1        |
| BOLT,BANJO,8X22 (Ref # 92002)            | 92002-1359  | 2        |
| BOLT,BANJO,8X22 (Ref # 92002A)           | 92002-1871  | 2        |
| WASHER,24.3X30X1.2 (Ref # 92022)         | 92022-1767  | 1        |
| SHIM,25.3X36X0.9 (Ref # 92025)           | 92025-1129  | 1        |
| PIN,6.2X8X14 (Ref # 92043)               | 92043-1263  | 1        |
| SCREW-PAN-CROS,6X20,WHITE (Ref # 220)    | 220B0620    | 2        |
| SCREW-PAN-CROS,6X30 (Ref # 220A)         | 220B0630    | 1        |
| SCREW-PAN-CROS (Ref # 220B)              | 220X0612    | 1        |
| O RING,10MM (Ref # 670)                  | 670B1510    | 2        |