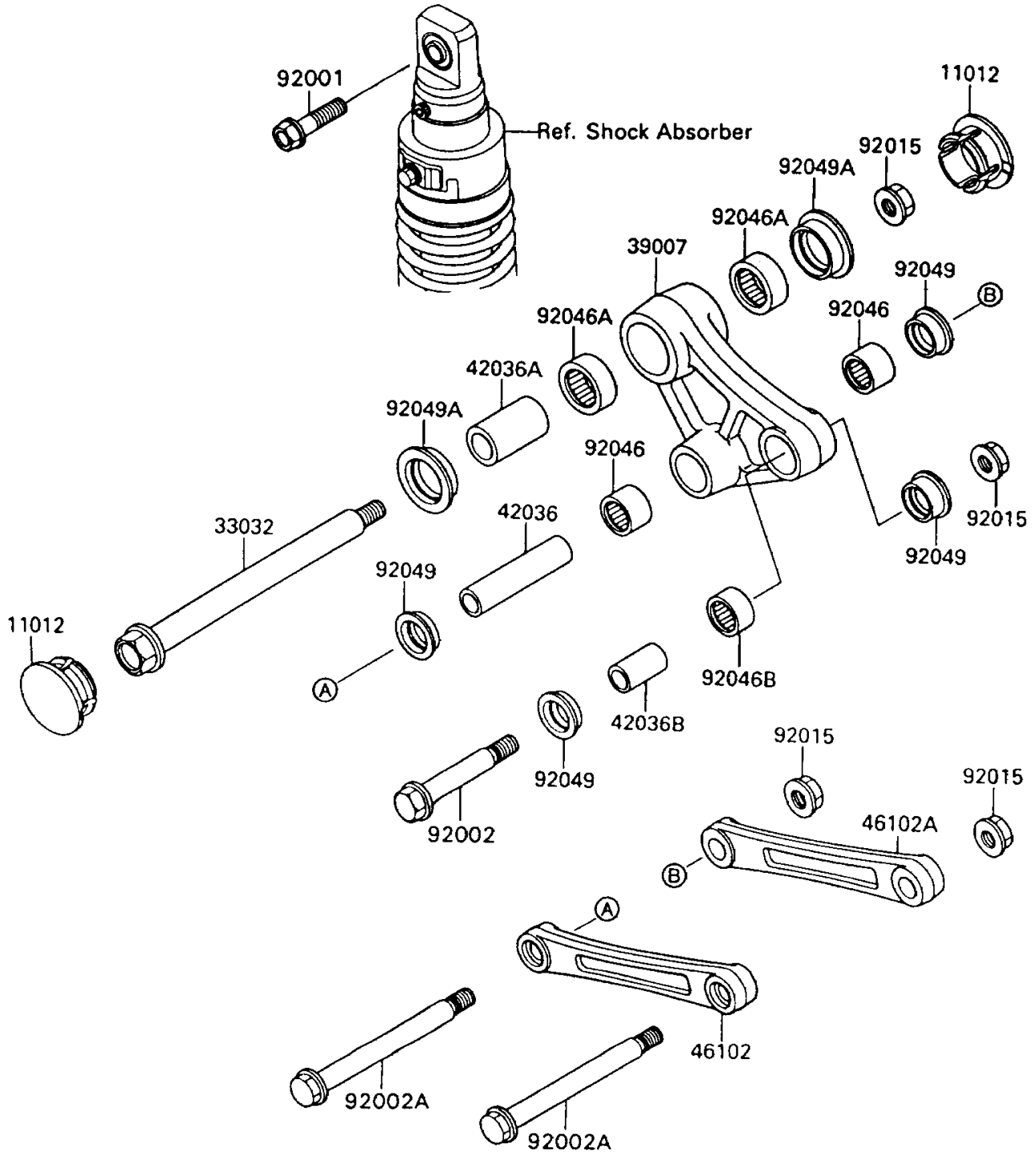


1993 KLR650 PARTS DIAGRAM

Rear Suspension

F2150



1993 KLR650 PARTS LIST

Rear Suspension

| ITEM NAME | PART NUMBER | QUANTITY |
|--|-------------|----------|
| CAP,32X14 (Ref # 11012) | 11012-1559 | 2 |
| SHAFT-SWING ARM (Ref # 33032) | 33032-1129 | 1 |
| ARM-SUSP,UNI TRAK (Ref # 39007) | 39007-1119 | 1 |
| SLEEVE,15X20X82 (Ref # 42036) | 42036-1205 | 1 |
| SLEEVE,20X28X60 (Ref # 42036A) | 42036-1207 | 1 |
| SLEEVE,15X20X30 (Ref # 42036B) | 42036-1208 | 1 |
| ROD,SUSPENSION,LH (Ref # 46102) | 46102-1227 | 1 |
| ROD,SUSPENSION,RH (Ref # 46102A) | 46102-1228 | 1 |
| BOLT,12X45 (Ref # 92001) | 92001-1939 | 1 |
| BOLT,FLANGED,14X64 (Ref # 92002) | 92002-1869 | 1 |
| BOLT,FLANGED,14X120 (Ref # 92002A) | 92002-1870 | 2 |
| NUT,14MM (Ref # 92015) | 92015-1459 | 4 |
| BEARING-NEEDLE,BM202726 (Ref # 92046) | 92046-1110 | 2 |
| BEARING-NEEDLE,BM283417 (Ref # 92046A) | 92046-1111 | 2 |
| BEARING-NEEDLE,BM202715 (Ref # 92046B) | 92046-1112 | 1 |
| SEAL-OIL,ARM,CNT (Ref # 92049) | 92049-1109 | 4 |
| SEAL-OIL (Ref # 92049A) | 92049-1181 | 2 |