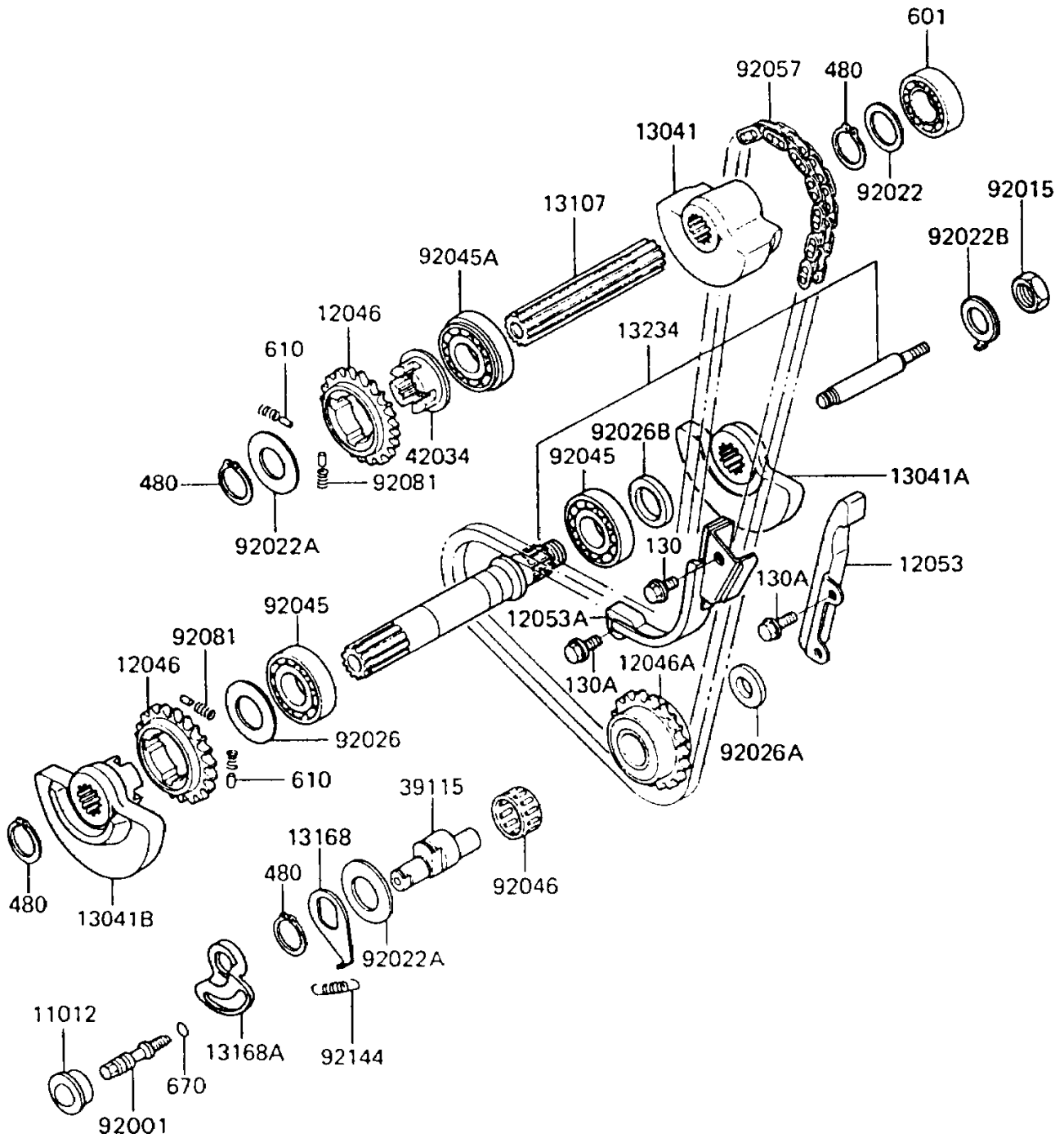


1993 KLR650 PARTS DIAGRAM

Balancer

E1323



1993 KLR650 PARTS LIST

Balancer

| ITEM NAME | PART NUMBER | QUANTITY |
|--|-------------|----------|
| CAP (Ref # 11012) | 11012-1369 | 1 |
| SPROCKET,BALANCER,18T (Ref # 12046) | 12046-1053 | 2 |
| SPROCKET-IDLER,18T (Ref # 12046A) | 12046-1114 | 1 |
| GUIDE-CHAIN,RR (Ref # 12053) | 12053-1111 | 1 |
| GUIDE-CHAIN,FR (Ref # 12053A) | 12053-1175 | 1 |
| BALANCER,RR (Ref # 13041) | 13041-1053 | 1 |
| BALANCER,FR,RH (Ref # 13041A) | 13041-1060 | 1 |
| BALANCER,FR,LH (Ref # 13041B) | 13041-1078 | 1 |
| SHAFT,BALANCER,RR (Ref # 13107) | 13107-1104 | 1 |
| LEVER (Ref # 13168) | 13168-1238 | 1 |
| LEVER,IDLER SHAFT (Ref # 13168A) | 13168-1436 | 1 |
| SHAFT-COMP,BALANCER,FR (Ref # 13234) | 13234-1058 | 1 |
| SHAFT-IDLER (Ref # 39115) | 39115-1054 | 1 |
| COUPLING,BALANCER (Ref # 42034) | 42034-1053 | 1 |
| BOLT,IDLER LEVER (Ref # 92001) | 92001-1857 | 1 |
| NUT,16MM (Ref # 92015) | 92015-1477 | 1 |
| WASHER,20.5X30X1,STEEL (Ref # 92022) | 92022-112 | 1 |
| WASHER,20.3X36X1.5 (Ref # 92022A) | 92022-1489 | 2 |
| WASHER (Ref # 92022B) | 92022-1651 | 1 |
| SPACER,20.2X36X3 (Ref # 92026) | 92026-1208 | 1 |
| SPACER,12.2X25X4.3 (Ref # 92026A) | 92026-1211 | 1 |
| SPACER,20.2X30X5 (Ref # 92026B) | 92026-1245 | 1 |
| BEARING-BALL,#6204 (Ref # 92045) | 92045-1032 | 2 |
| BEARING-BALL,SX0415 (Ref # 92045A) | 92045-1188 | 1 |
| BEARING-NEEDLE (Ref # 92046) | 92046-1127 | 1 |
| CHAIN,BALANCER,BF06HX70L (Ref # 92057) | 92057-1158 | 1 |
| SPRING,BALANCER (Ref # 92081) | 92081-135 | 8 |
| SPRING,IDLER SHAFT (Ref # 92144) | 92144-1445 | 1 |
| BOLT-FLANGED,8X20 (Ref # 130) | 130G0820 | 1 |

1993 KLR650 PARTS LIST

Balancer

| ITEM NAME | PART NUMBER | QUANTITY |
|---------------------------------|-------------|----------|
| BOLT-FLANGED (Ref # 130A) | 130P0616 | 3 |
| CIRCLIP-TYPE-C,20MM (Ref # 480) | 480J2000 | 4 |
| BEARING-BALL,#6004 (Ref # 601) | 601A6004 | 1 |
| ROLLER,4X8 (Ref # 610) | 610A0408 | 8 |
| O RING,7MM (Ref # 670) | 670B1507 | 1 |