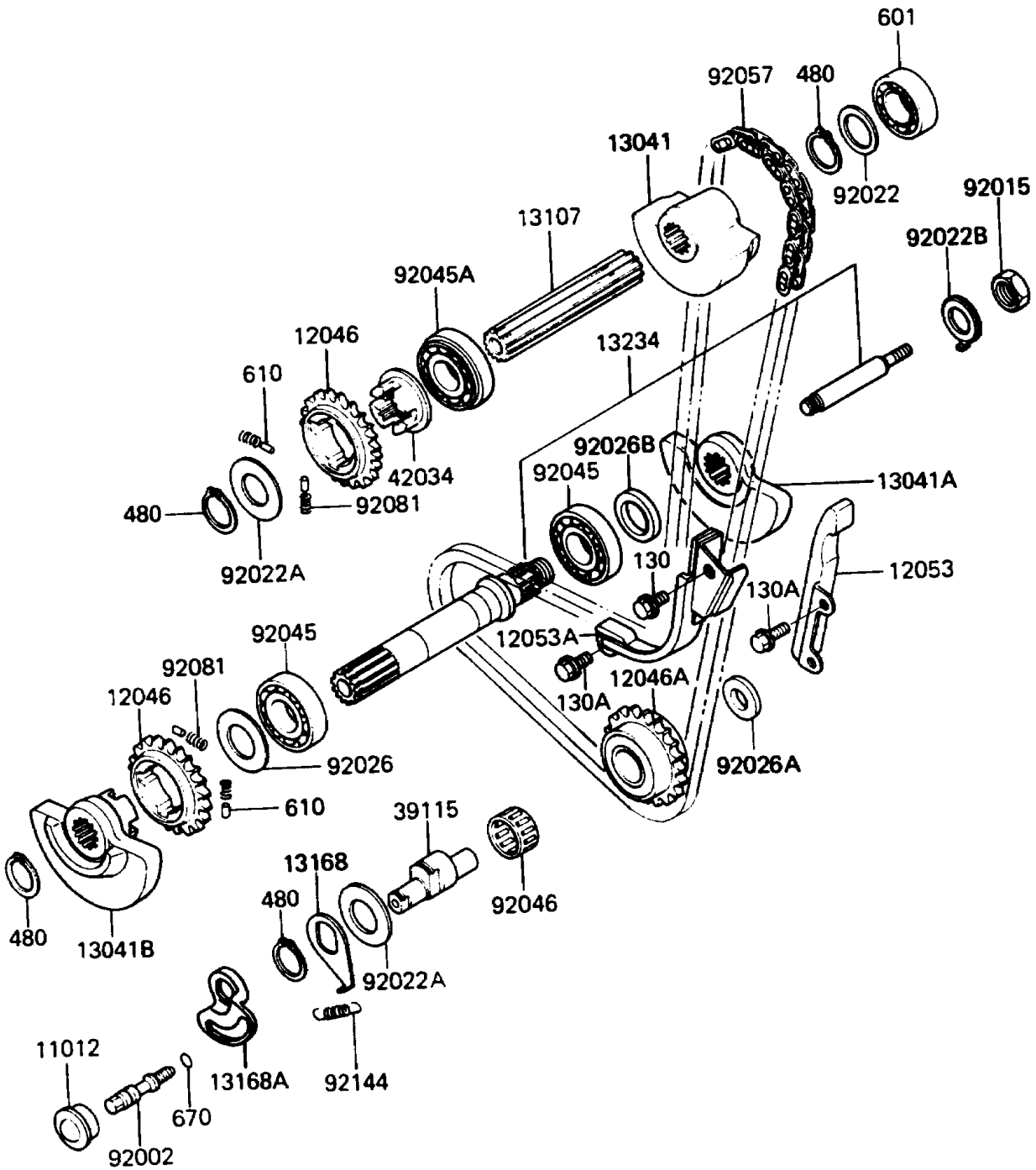


# 1987 KLR® 650 PARTS DIAGRAM

Balancer

E1323



# 1987 KLR® 650 PARTS LIST

## Balancer

ITEM NAME	PART NUMBER	QUANTITY
CAP (Ref # 11012)	11012-1369	1
SPROCKET,BALANCER,18T (Ref # 12046)	12046-1053	2
SPROCKET,IDLER,18T (Ref # 12046A)	12046-1114	1
GUIDE-CHAIN,RR (Ref # 12053)	12053-1111	1
GUIDE-CHAIN,FR (Ref # 12053A)	12053-1175	1
BALANCER,RR (Ref # 13041)	13041-1053	1
BALANCER,FR,RH (Ref # 13041A)	13041-1060	1
BALANCER,FR,LH (Ref # 13041B)	13041-1078	1
SHAFT,BALANCER,RR (Ref # 13107)	13107-1104	1
LEVER (Ref # 13168)	13168-1238	1
LEVER,IDLER SHAFT (Ref # 13168A)	13168-1436	1
SHAFT-COMP,BALANCER,FR (Ref # 13234)	13234-1058	1
SHAFT-IDLER (Ref # 39115)	39115-1054	1
COUPLING,BALANCER (Ref # 42034)	42034-1053	1
BOLT,IDLER LEVER (Ref # 92002)	92001-1857	1
NUT,16MM (Ref # 92015)	92015-1477	1
WASHER,20.5X30X1,STEEL (Ref # 92022)	92022-112	1
WASHER,20.3X36X1.5 (Ref # 92022A)	92022-1489	2
WASHER (Ref # 92022B)	92022-1651	1
SPACER,20.2X36X3 (Ref # 92026)	92026-1208	1
SPACER,12.2X25X4.3 (Ref # 92026A)	92026-1211	1
SPACER,20.2X30X5 (Ref # 92026B)	92026-1245	1
BEARING-BALL,#6204 (Ref # 92045)	92045-1032	2
BEARING-BALL,SX0415 (Ref # 92045A)	92045-1188	1
BEARING-NEEDLE,20X24X13 (Ref # 92046)	92046-1127	1
CHAIN,BALANCER,BF06HX70L (Ref # 92057)	92057-1158	1
SPRING,BALANCER (Ref # 92081)	92081-135	8
SPRING,IDLER SHAFT (Ref # 92144)	92144-1445	1
BOLT-FLANGED,8X20 (Ref # 130)	130G0820	1

## 1987 KLR® 650 PARTS LIST

### Balancer

ITEM NAME	PART NUMBER	QUANTITY
BOLT-FLANGED (Ref # 130A)	130P0616	3
CIRCLIP-TYPE-C,20MM (Ref # 480)	480J2000	4
BEARING-BALL,#6004 (Ref # 601)	601A6004	1
ROLLER,4X8 (Ref # 610)	610A0408	8
O RING,7MM (Ref # 670)	670B1507	1