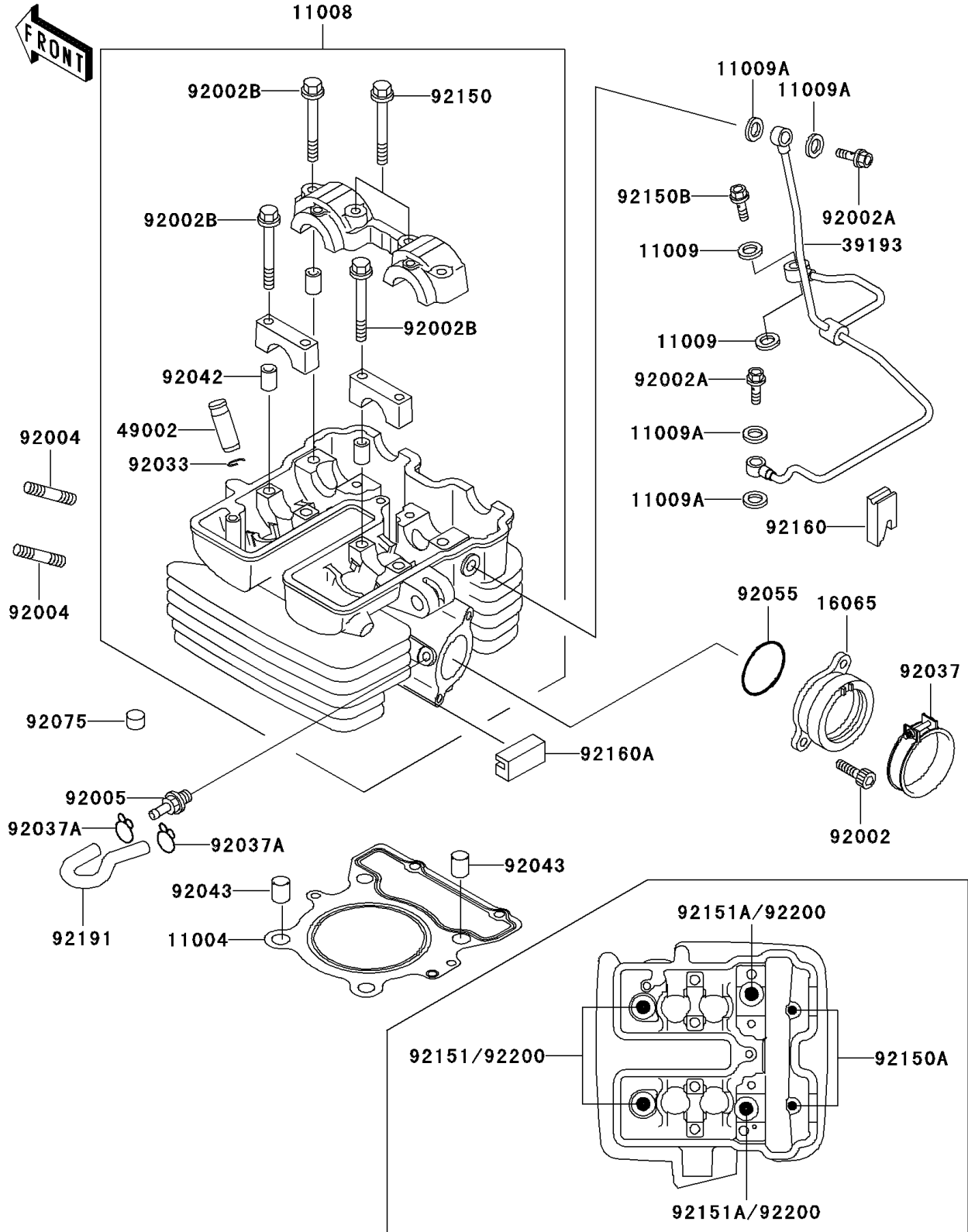


# 2000 Super Sherpa PARTS DIAGRAM

Cylinder Head

E1111



## 2000 Super Sherpa PARTS LIST

### Cylinder Head

ITEM NAME	PART NUMBER	QUANTITY
GASKET-HEAD (Ref # 11004)	11004-1328	1
HEAD-COMP-CYLINDER (Ref # 11008)	11008-1340	1
GASKET,10X14.5X1.5 (Ref # 11009)	11009-1105	2
GASKET,8.2X14X1.0 (Ref # 11009A)	11009-1344	4
HOLDER-CARBURETOR (Ref # 16065)	16065-1342	1
PIPE-OIL (Ref # 39193)	39193-1032	1
GUIDE-VALVE (Ref # 49002)	49002-1126	AR
BOLT,6X16 (Ref # 92002)	92002-1143	2
BOLT,BANJO,8X20 (Ref # 92002A)	92002-1618	2
BOLT,6X40 (Ref # 92002B)	92002-1756	6
STUD,8X22 (Ref # 92004)	92004-1217	2
FITTING (Ref # 92005)	92005-1337	1
RING-SNAP (Ref # 92033)	92033-1247	4
CLAMP,ID=53,BLACK (Ref # 92037)	92037-1304	1
CLAMP (Ref # 92037A)	92037-1610	2
PIN,DOWEL,6.3X8X14 (Ref # 92042)	92042-007	6
PIN,10.1X12X14 (Ref # 92043)	92043-4009	2
RING-O (Ref # 92055)	92055-520	1
DAMPER (Ref # 92075)	92075-182	20
BOLT,6X35 (Ref # 92150)	92150-1083	2
BOLT,6X135 (Ref # 92150A)	92150-1552	2
BOLT,BANJO,10X23 (Ref # 92150B)	92150-1641	1
BOLT,10X158 (Ref # 92151)	92151-1152	2
BOLT (Ref # 92151A)	92151-1263	2
DAMPER (Ref # 92160)	92160-1816	1
DAMPER (Ref # 92160A)	92160-1879	1
TUBE (Ref # 92191)	92191-1158	1
WASHER,10.5X19X2.3 (Ref # 92200)	92200-1339	4