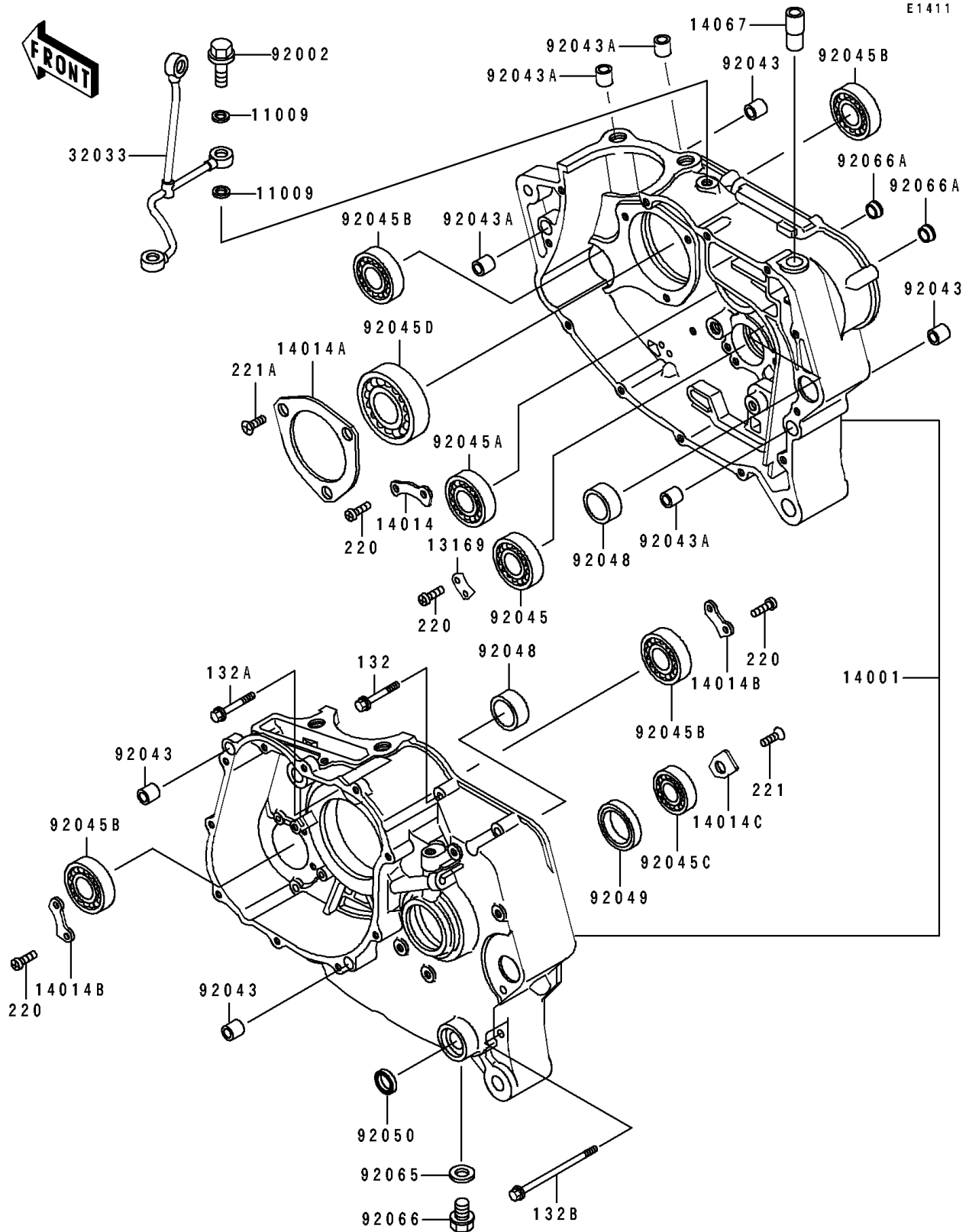


# 1995 KLR250 PARTS DIAGRAM

## Crankcase



# 1995 KLR250 PARTS LIST

## Crankcase

ITEM NAME	PART NUMBER	QUANTITY
GASKET,10X14.5X1.5 (Ref # 11009)	11009-1105	4
PLATE,GEAR CHANGE DRUM (Ref # 13169)	13169-014	1
SET-CRANKCASE (Ref # 14001)	14001-5180	1
PLATE-POSITION,CHANGE DRUM (Ref # 14014)	14014-037	1
PLATE-POSITION,CRANK BEARING (Ref # 14014A)	14014-1004	1
PLATE-POSITION (Ref # 14014B)	14014-1014	2
PLATE-POSITION (Ref # 14014C)	14014-1057	1
FITTING,BREATHER (Ref # 14067)	14067-006	1
PIPE (Ref # 32033)	32033-1427	1
BOLT,BANJO,10X25 (Ref # 92002)	92002-1170	2
PIN,6.2X8X14 (Ref # 92043)	92043-1263	4
PIN,10.1X12X14 (Ref # 92043A)	92043-4009	4
BEARING-BALL,#6905 (Ref # 92045)	92045-036	1
BEARING-BALL,TMB204 JR (Ref # 92045A)	92045-1041	1
BEARING-BALL,6004TMB (Ref # 92045B)	92045-1118	4
BEARING-BALL,TM-SX0597LU (Ref # 92045C)	92045-1127	1
BEARING-BALL (Ref # 92045D)	92045-1172	1
RACE,26X33X13 (Ref # 92048)	92048-1057	2
SEAL-OIL,TC32457 (Ref # 92049)	92049-1159	1
SEAL-OIL (Ref # 92050)	92050-082	1
GASKET,12X22X2,DRAIN PLUG (Ref # 92065)	92065-097	1
PLUG,OIL DRAIN,12X15 (Ref # 92066)	92066-1174	1
PLUG (Ref # 92066A)	92066-1282	2
BOLT-FLANGED-SMALL,6X40 (Ref # 132)	132J0640	10
BOLT-FLANGED-SMALL (Ref # 132A)	132J0650	1
BOLT-FLANGED-SMALL (Ref # 132B)	132J0670	3
SCREW-PAN-CROS,6X12 (Ref # 220)	220B0612	8
SCREW-CSK-CROS,6X12 (Ref # 221)	221B0612	1
SCREW-CSK-CROS,6X16 (Ref # 221A)	221B0616	3