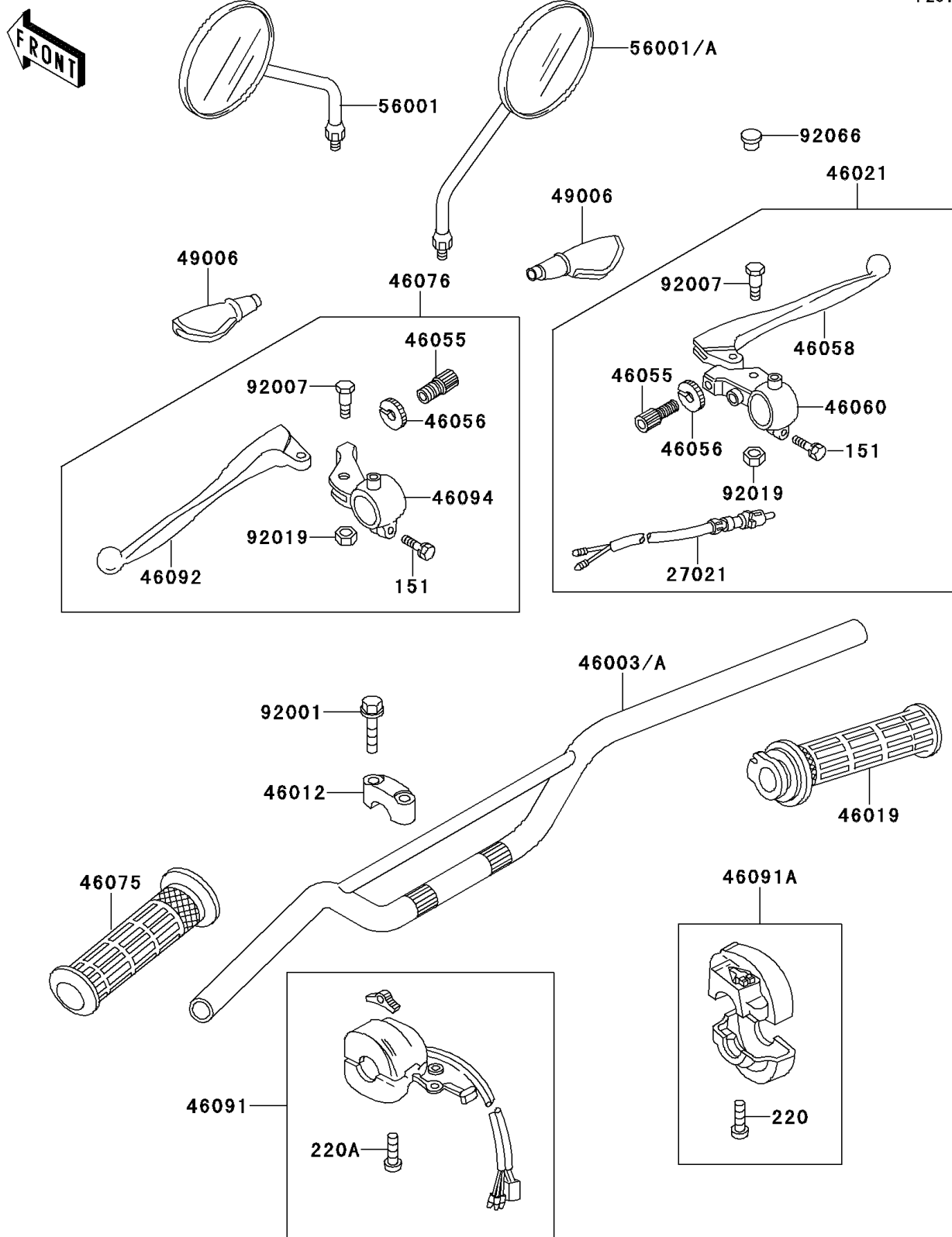


1997 KE100 PARTS DIAGRAM

Handlebar

F2310



1997 KE100 PARTS LIST

Handlebar

ITEM NAME	PART NUMBER	QUANTITY
BOLT-WP (Ref # 151)	151N0625	2
SCREW-PAN-CROS (Ref # 220)	220B0518	2
SCREW-PAN-CROS,5X25 (Ref # 220A)	220B0525	2
SWITCH,FR BRAKE LAMP (Ref # 27021)	27021-004	1
HANDLE (Ref # 46003)	46003-1432	1
HOLDER-HANDLE,UPP (Ref # 46012)	46012-008	2
GRIP-ASSY,THROTTLE (Ref # 46019)	46019-1005	1
LEVER-ASSY-GRIP,BRAKE (Ref # 46021)	46021-031	1
SCREW,CABLE ADJUST,8MM (Ref # 46055)	46055-003	2
NUT,CABLE ADJUST LOCK,8MM (Ref # 46056)	46056-005	2
LEVER-GRIP,FRONT BRAKE (Ref # 46058)	46058-004	1
HOLDER,BRAKE LEVER,FR,F.BLACK (Ref # 46060)	46060-009-21	1
GRIP,LH (Ref # 46075)	46075-1004	1
LEVER-ASSY-GRIP,CLUTCH (Ref # 46076)	46076-044	1
HOUSING-ASSY-CONTROL,LH (Ref # 46091)	46091-040	1
HOUSING-ASSY-CONTROL,RH (Ref # 46091A)	46091-1041	1
LEVER-GRIP,CLUTCH (Ref # 46092)	46092-015	1
HOLDER,F.BLACK (Ref # 46094)	46094-011-21	1
BOOT,LEVER HOLDER (Ref # 49006)	49006-1017	2
BOLT,FLANGED,8X35 (Ref # 92001)	92001-1910	4
BOLT,5X22 (Ref # 92007)	92007-046	2
NUT,LOCK,5MM (Ref # 92019)	92019-014	2
MIRROR-ASSY (Ref # 56001)	56001-1381	1
MIRROR-ASSY (Ref # 56001)	56001-1381	2
MIRROR-ASSY (Ref # 56001A)	56001-1381	1
PLUG,9.5X8,POLYETHYLENE (Ref # 92066)	92066-1077	1