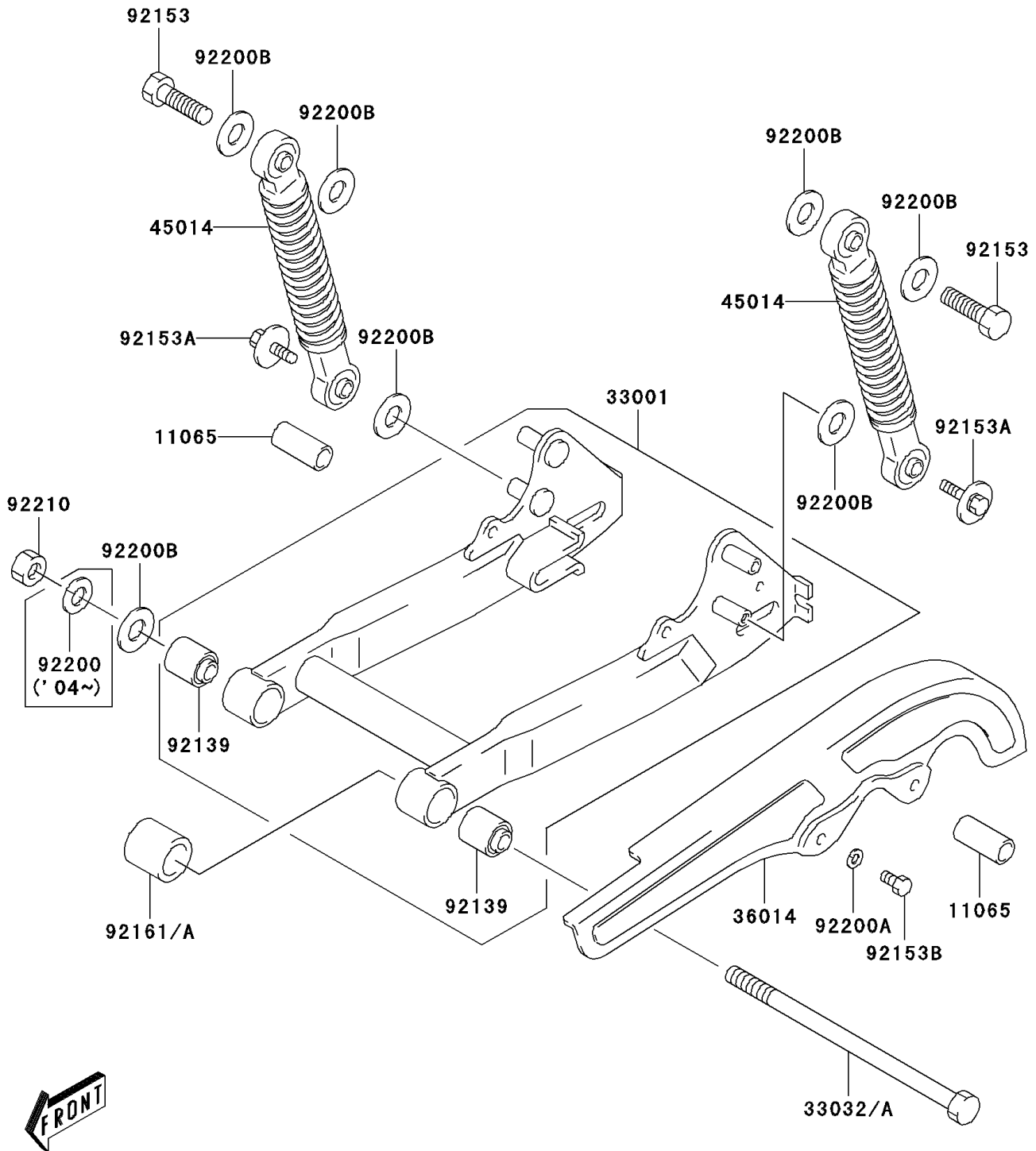


## 2003 KDX50 PARTS DIAGRAM

Swingarm

F2141



## 2003 KDX50 PARTS LIST

### Swingarm

| ITEM NAME                                 | PART NUMBER    | QUANTITY |
|---|----------------|----------|
| CAP (Ref # 11065)                         | 11065-S044     | 1        |
| ARM-COMP-SWING,B.SILVER (Ref # 33001)     | 33001-S007-530 | 1        |
| SHAFT-SWING ARM (Ref # 33032)             | 33032-S004     | 1        |
| CASE-CHAIN (Ref # 36014)                  | 36014-S006     | 1        |
| SHOCKABSORBER (Ref # 45014)               | 45014-S020     | 1        |
| BUSHING,10X22X28 (Ref # 92139)            | 92139-S031     | 1        |
| BOLT,10X35 (Ref # 92153)                  | 92153-S324     | 1        |
| BOLT,6X12 (Ref # 92153A)                  | 92153-S325     | 1        |
| BOLT,6X12 (Ref # 92153B)                  | 92153-S326     | 1        |
| DAMPER (Ref # 92161)                      | 92161-S113     | 1        |
| WASHER,CHAIN ADJUSTER LOCK (Ref # 92200A) | 92200-S102     | 1        |
| WASHER,10.5X22X1.6 (Ref # 92200B)         | 92200-S173     | 1        |
| NUT (Ref # 92210)                         | 92210-S002     | 1        |