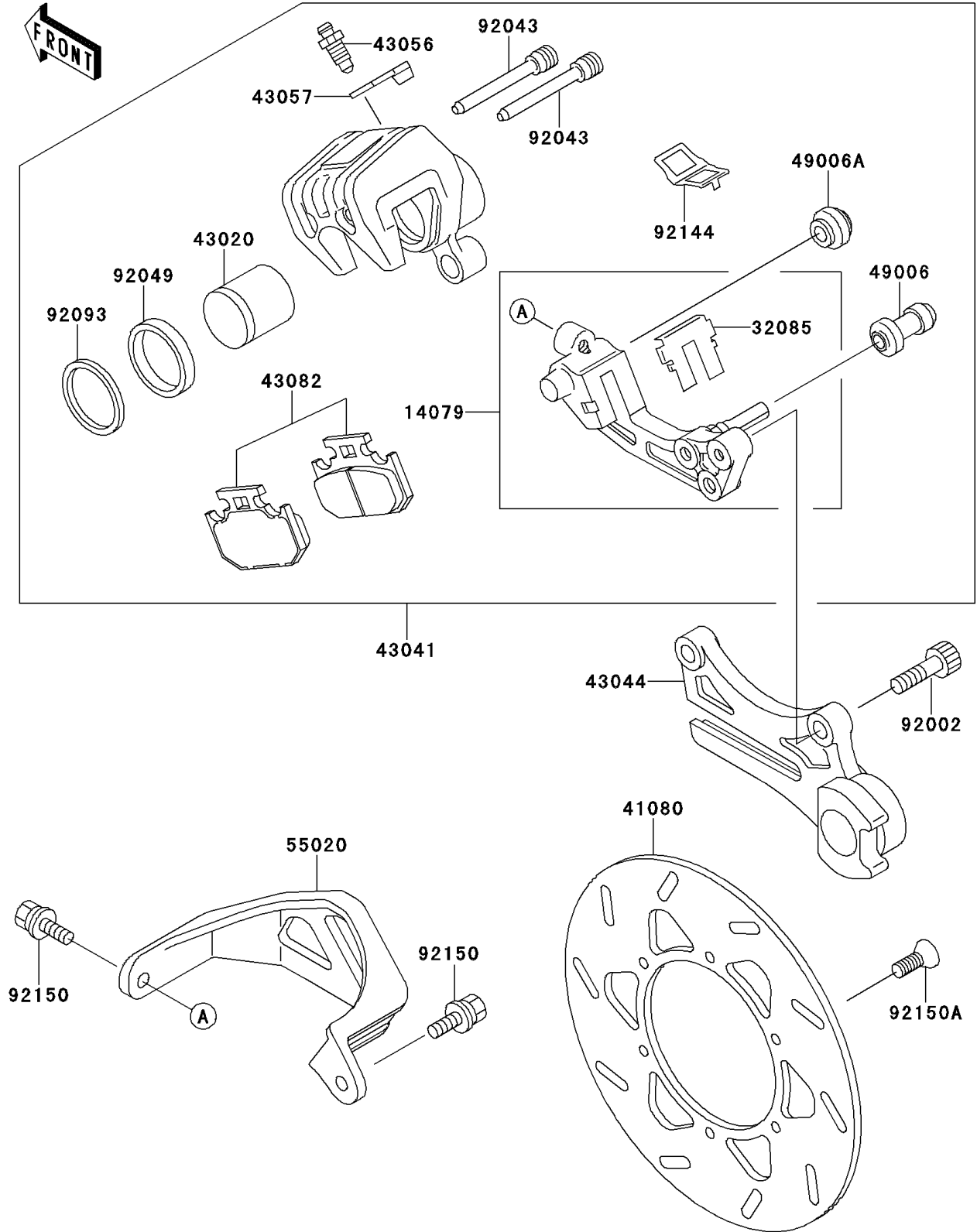


# 1997 KDX220R PARTS DIAGRAM

Rear Brake

F2294



# 1997 KDX220R PARTS LIST

## Rear Brake

| ITEM NAME                              | PART NUMBER   | QUANTITY |
|--|---------------|----------|
| HOLDER-ASSY,REAR CALIPER (Ref # 14079) | 14079-1070    | 1        |
| STOPPER,PAD (Ref # 32085)              | 32085-1315    | 1        |
| DISC,RR (Ref # 41080)                  | 41080-1384    | 1        |
| PISTON-COMP-BRAKE (Ref # 43020)        | 43020-1099    | 1        |
| CALIPER-ASSY,RR (Ref # 43041)          | 43041-1448    | 1        |
| HOLDER-COMP-CALIPER (Ref # 43044)      | 43044-1114    | 1        |
| BREATHER-BRAKE (Ref # 43056)           | 43056-1055    | 1        |
| CAP-BREATHER (Ref # 43057)             | 43057-1001    | 1        |
| PAD-ASSY-BRAKE (Ref # 43082)           | 43082-1131    | 1        |
| BOOT,CALIPER (Ref # 49006)             | 49006-1088    | 1        |
| BOOT,CALIPER (Ref # 49006A)            | 49006-1242    | 1        |
| GUARD,RR CALIPER,P.WHITE (Ref # 55020) | 55020-1488-6F | 1        |
| BOLT,SOCKET,8X25 (Ref # 92002)         | 92002-1442    | 2        |
| PIN,HANGER (Ref # 92043)               | 92043-1416    | 2        |
| SEAL-OIL,PISTON (Ref # 92049)          | 92049-1331    | 1        |
| SEAL,PISTON (Ref # 92093)              | 92093-1272    | 1        |
| SPRING,PAD (Ref # 92144)               | 92144-1364    | 1        |
| BOLT,FLANGED,6X16 (Ref # 92150)        | 92150-1506    | 2        |
| BOLT,DISC PLATE,8X15 (Ref # 92150A)    | 92150-1811    | 6        |