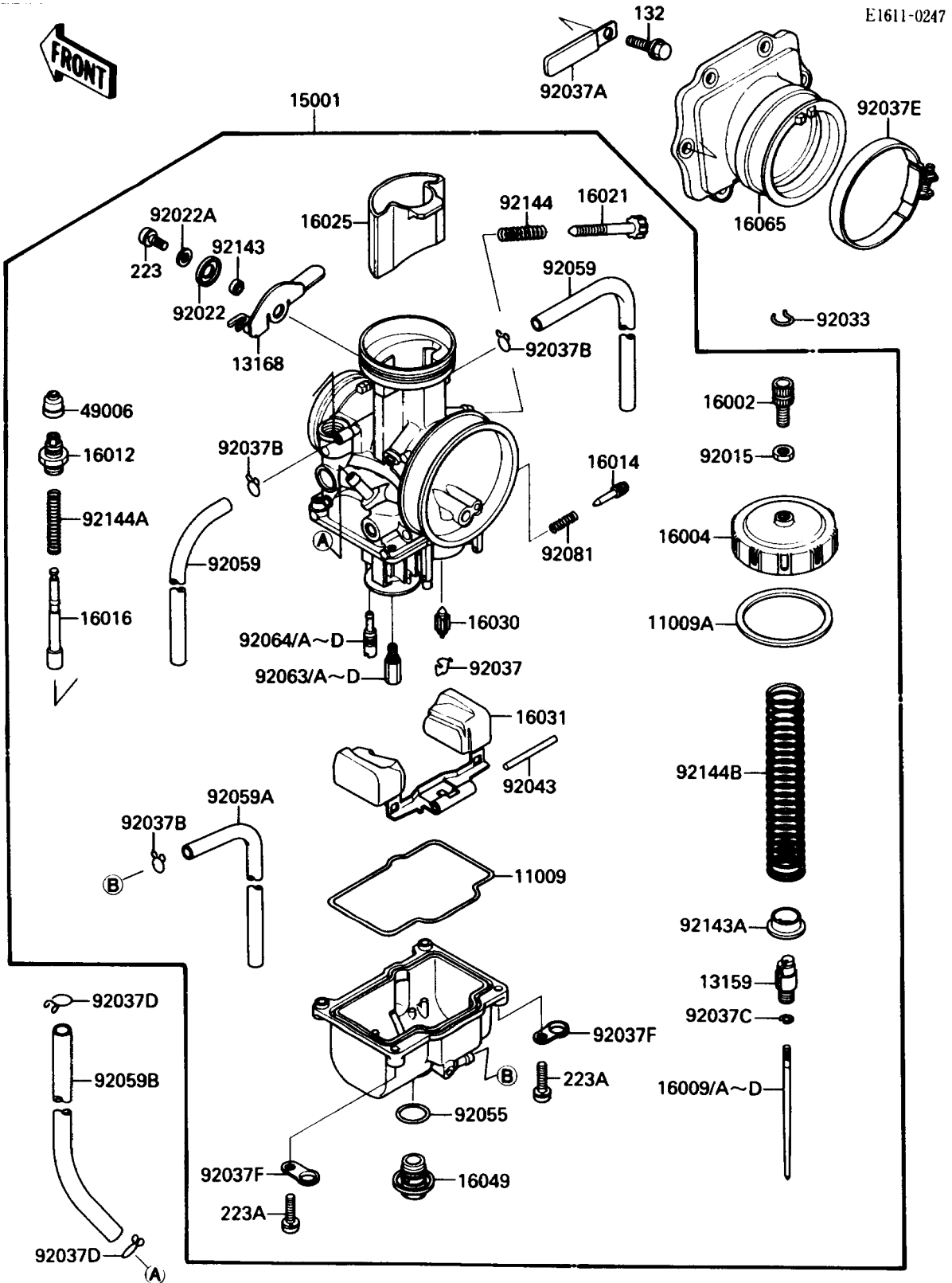


1988 KDX200 PARTS DIAGRAM

Carburetor



1988 KDX200 PARTS LIST

Carburetor

ITEM NAME	PART NUMBER	QUANTITY
GASKET,FLOAT CHAMBER (Ref # 11009)	11009-1716	1
GASKET,CHAMBER CAP (Ref # 11009A)	11009-1717	1
CONNECTOR,THROTTLE CABLE (Ref # 13159)	13159-1060	1
LEVER,STARTER (Ref # 13168)	13168-1388	1
CARBURETOR-ASSY (Ref # 15001)	15001-1404	1
ADJUSTER-CABLE (Ref # 16002)	16002-1056	1
CAP-CHAMBER,MIXING (Ref # 16004)	16004-1061	1
NEEDLE-JET,R1366E (Ref # 16009)	16009-1383	1
NEEDLE-JET,R1367E (Ref # 16009A)	16009-1384	1
NEEDLE-JET,R1368E (Ref # 16009B)	16009-1385	1
NEEDLE-JET,R1369E (Ref # 16009C)	16009-1386	1
NEEDLE-JET,R1370E (Ref # 16009D)	16009-1387	1
CAP-STARTER PLUNGER (Ref # 16012)	16012-1061	1
SCREW-PILOT AIR (Ref # 16014)	16014-1059	1
PLUNGER,STARTER (Ref # 16016)	16016-1072	1
SCREW-THROTTLE STOP (Ref # 16021)	16021-1124	1
VALVE-THROTTLE,CA6 (Ref # 16025)	16025-1148	1
VALVE-FLOAT (Ref # 16030)	16030-1057	1
FLOAT (Ref # 16031)	16031-1067	1
COVER-MAIN JET (Ref # 16049)	16049-1051	1
HOLDER-CARBURETOR (Ref # 16065)	16065-1161	1
BOOT,STARTER PLUNGER (Ref # 49006)	49006-1233	1
NUT,CABLE ADJUST LOCK (Ref # 92015)	92015-1574	1
WASHER,8X16X1.1 (Ref # 92022)	92022-1709	1
WASHER,4.2X12X1.0 (Ref # 92022A)	92022-1933	1
RING-SNAP (Ref # 92033)	92036-018	1
CLAMP,FLOAT VALVE (Ref # 92037)	16044-007	1
CLAMP,WIRING HARNESS (Ref # 92037A)	92037-1069	1
CLAMP,TUBE (Ref # 92037B)	92037-1396	3

1988 KDX200 PARTS LIST

Carburetor

ITEM NAME	PART NUMBER	QUANTITY
CLAMP,JET NEEDLE (Ref # 92037C)	92037-1401	1
CLAMP,TUBE (Ref # 92037D)	92037-147	2
CLAMP (Ref # 92037E)	92037-1843	1
CLAMP,HOSE (Ref # 92037F)	92037-1969	2
PIN,FLOAT (Ref # 92043)	92043-1207	1
RING-O,MAIN JET COVER (Ref # 92055)	92055-1167	1
TUBE,4X7X420 (Ref # 92059)	92059-1896	2
TUBE,3.5X6.5X330 (Ref # 92059A)	92059-1897	1
TUBE,5.8X10.8X220 (Ref # 92059B)	92059-3765	1
JET-MAIN,#140 (Ref # 92063)	92063-1360	1
JET-MAIN,#142 (Ref # 92063A)	92063-1361	1
JET-MAIN,#145 (Ref # 92063B)	92063-1362	1
JET-MAIN,#148 (Ref # 92063C)	92063-1363	1
JET-MAIN,#150 (Ref # 92063D)	92063-1364	1
JET-PILOT,#52 (Ref # 92064)	92064-1130	1
JET-PILOT,#42 (Ref # 92064A)	92064-1141	1
JET-PILOT,#45 (Ref # 92064B)	92064-1142	1
JET-PILOT,#48 (Ref # 92064C)	92064-1143	1
JET-PILOT,#50 (Ref # 92064D)	92064-1144	1
SPRING,ADJUST SCREW (Ref # 92081)	92081-1555	1
COLLAR,STARTER LEVER (Ref # 92143)	92143-1200	1
COLLAR,THROTTLE VALVE (Ref # 92143A)	92143-1201	1
SPRING,THROTTLE STOP SCREW (Ref # 92144)	92144-1257	1
SPRING,STARTER PLUNGER (Ref # 92144A)	92144-1277	1
SPRING,THROTTLE VALVE (Ref # 92144B)	92144-1284	1
BOLT-FLANGED-SMALL (Ref # 132)	132G0620	6
SCREW-PAN-WS-CROS (Ref # 223)	223C0408	1
SCREW-PAN-WS-CROS (Ref # 223A)	223C0416	4