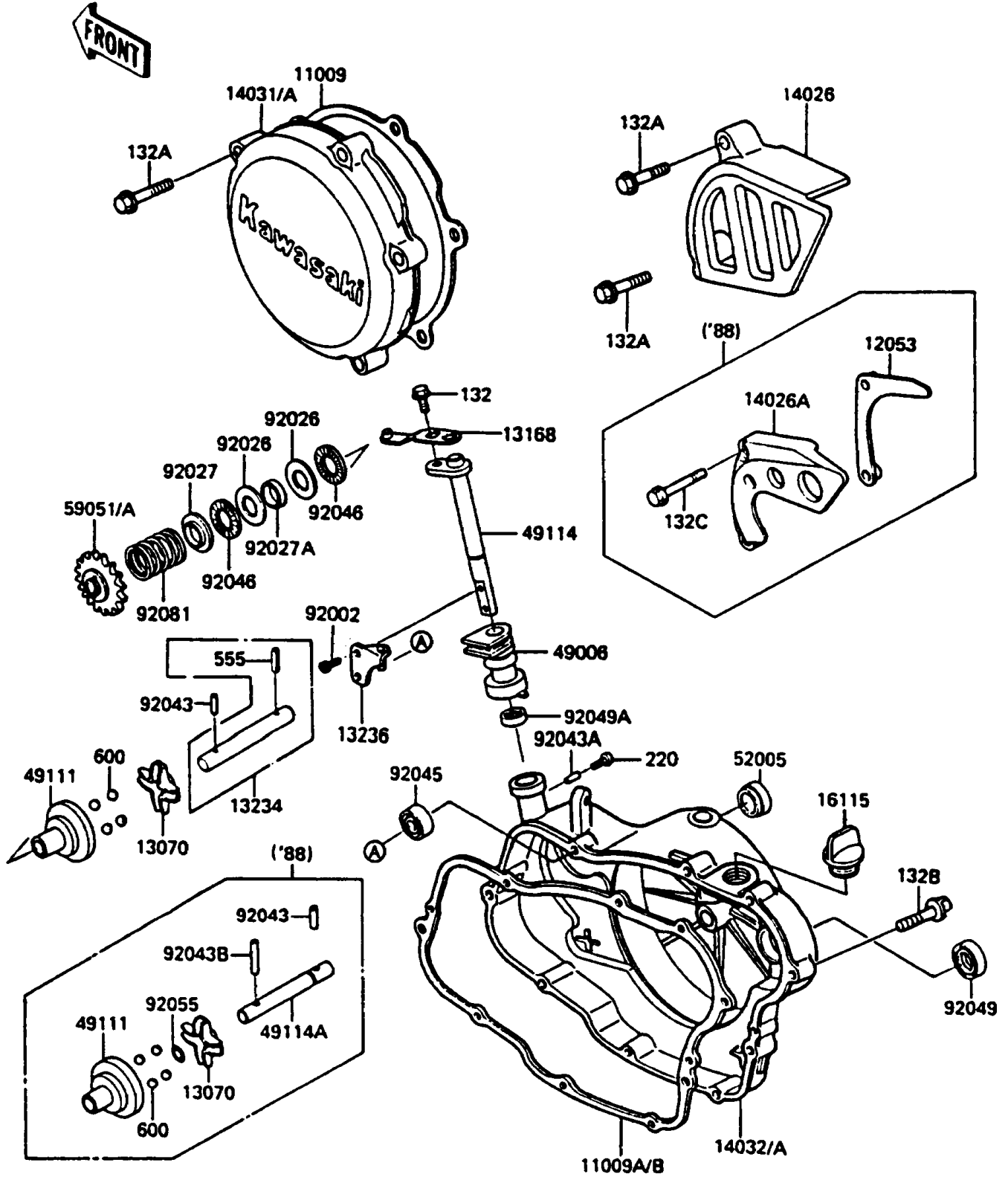


1988 KDX200 PARTS DIAGRAM

Engine Cover(s)

E1431-0183



1988 KDX200 PARTS LIST

Engine Cover(s)

ITEM NAME	PART NUMBER	QUANTITY
GASKET,GENERATOR COVER (Ref # 11009)	11009-1266	1
GASKET,CLUTCH COVER (Ref # 11009B)	11009-1740	1
GUIDE-CHAIN (Ref # 12053)	12053-1228	1
GUIDE (Ref # 13070)	13070-1122	1
LEVER (Ref # 13168)	13168-1283	1
LEVER-COMP,GOVERNOR (Ref # 13236)	13236-1139	1
COVER-CHAIN (Ref # 14026A)	14026-1136	1
COVER-GENERATOR (Ref # 14031A)	14031-1213	1
COVER-CLUTCH (Ref # 14032A)	14032-1240	1
CAP-OIL FILLER (Ref # 16115)	16115-018	1
BOOT (Ref # 49006)	49006-1180	1
HOLDER-GOVERNOR WEIGHT (Ref # 49111)	49111-1051	1
SHAFT-GOVERNOR (Ref # 49114)	49114-1055	1
SHAFT-GOVERNOR (Ref # 49114A)	49114-1058	1
GAUGE,OIL LEVEL (Ref # 52005)	52005-1055	1
GEAR-SPUR,GOVERNOR,18T (Ref # 59051A)	59051-1189	1
BOLT,SOCKET,4X8 (Ref # 92002)	92002-1403	2
SPACER,15X28X1 (Ref # 92026)	92026-1238	2
COLLAR (Ref # 92027)	92027-1838	1
COLLAR,15.2X17X4 (Ref # 92027A)	92027-1839	1
PIN,3X12.8 (Ref # 92043)	92043-1256	1
PIN,2X9.8 (Ref # 92043A)	92043-1293	1
PIN,3X19.8 (Ref # 92043B)	92043-1319	1
BEARING-BALL,#608 (Ref # 92045)	92045-1048	1
BEARING-NEEDLE,AXK1102 (Ref # 92046)	92046-1052	2
SEAL-OIL,SB18307 (Ref # 92049)	92049-013	1
SEAL-OIL,SD08144 (Ref # 92049A)	92049-1207	1
RING-O,5.5X1.5 (Ref # 92055)	92055-1343	1
SPRING,GOVERNOR (Ref # 92081)	92081-1769	1

1988 KDX200 PARTS LIST

Engine Cover(s)

ITEM NAME	PART NUMBER	QUANTITY
BOLT-FLANGED-SMALL (Ref # 132)	132G0608	1
BOLT-FLANGED-SMALL (Ref # 132A)	132G0625	5
BOLT-FLANGED-SMALL (Ref # 132B)	132G0630	9
BOLT-FLANGED-SMALL (Ref # 132C)	132G0640	2
SCREW-PAN-CROS (Ref # 220)	220B0306	1
BALL-STEEL,5/16" (Ref # 600)	600A1000	4