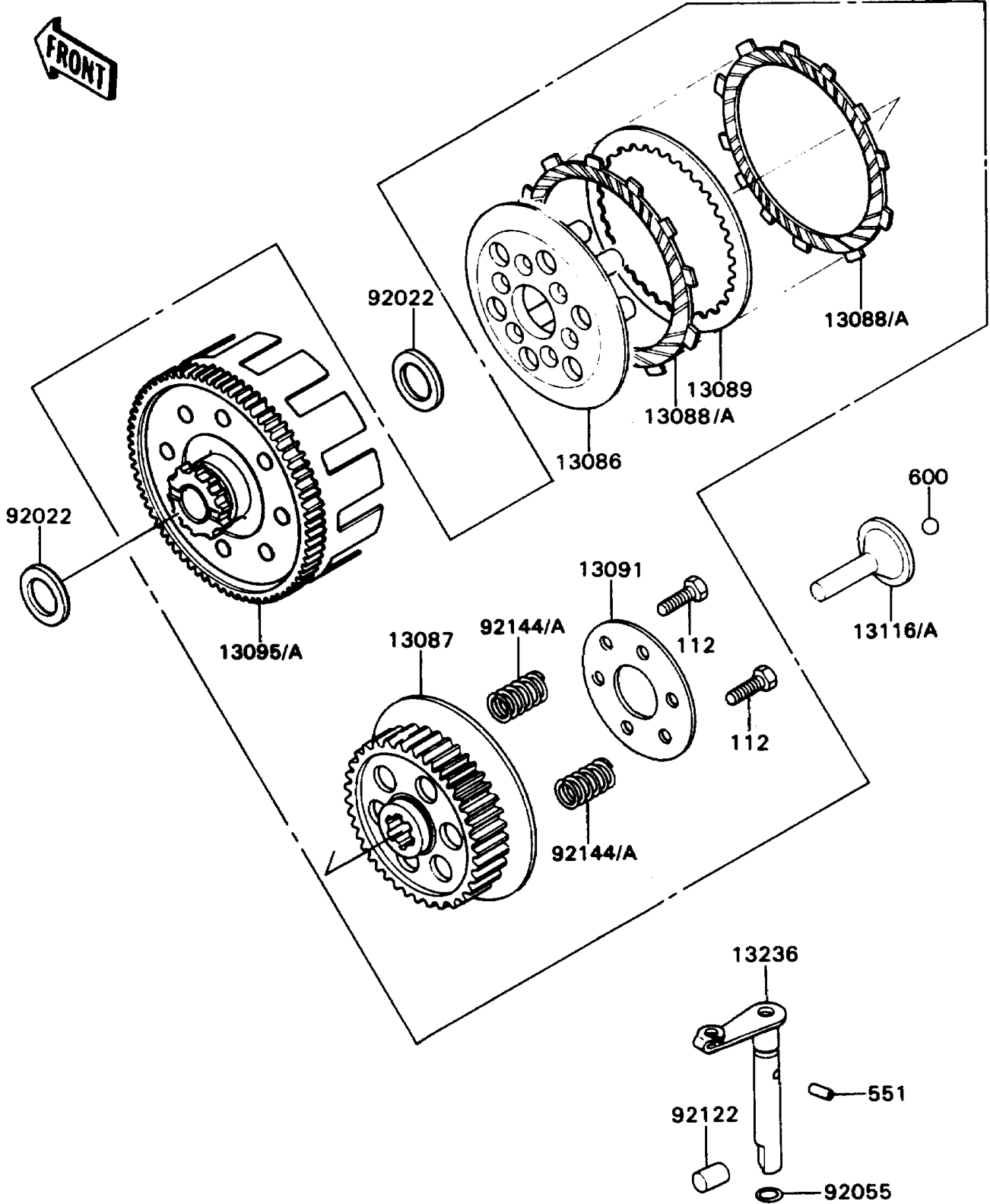


# 1988 KD80 PARTS DIAGRAM

Clutch

E1350-0153



# 1988 KD80 PARTS LIST

## Clutch

ITEM NAME	PART NUMBER	QUANTITY
WHEEL-CLUTCH (Ref # 13086)	13086-1004	1
HUB-CLUTCH (Ref # 13087)	13087-1113	1
PLATE-FRICTION (Ref # 13088)	13088-1010	4
PLATE-FRICTION (Ref # 13088A)	13088-1011	4
PLATE-CLUTCH,STEEL (Ref # 13089)	13089-1009	3
HOLDER,CLUTCH SPRING (Ref # 13091)	13091-1115	1
HOUSING-COMP-CLUTCH (Ref # 13095)	13095-1183	1
HOUSING-COMP-CLUTCH (Ref # 13095A)	13095-1187	1
ROD-PUSH,CLUTCH (Ref # 13116)	13116-1028	1
LEVER-COMP,CLUTCH RELEASE (Ref # 13236)	13236-1183	1
WASHER,17.3X28X1 (Ref # 92022)	92022-255	2
RING-O (Ref # 92055)	92055-1023	1
ROLLER,10X12 (Ref # 92122)	92122-1019	1
SPRING,CLUTCH (Ref # 92144)	92144-1241	6
BOLT-UPSET (Ref # 112)	112G0520	6
PIN-DOWEL,3X6 (Ref # 551)	551A0306	1
BALL-STEEL,9/32" (Ref # 600)	600A0900	1