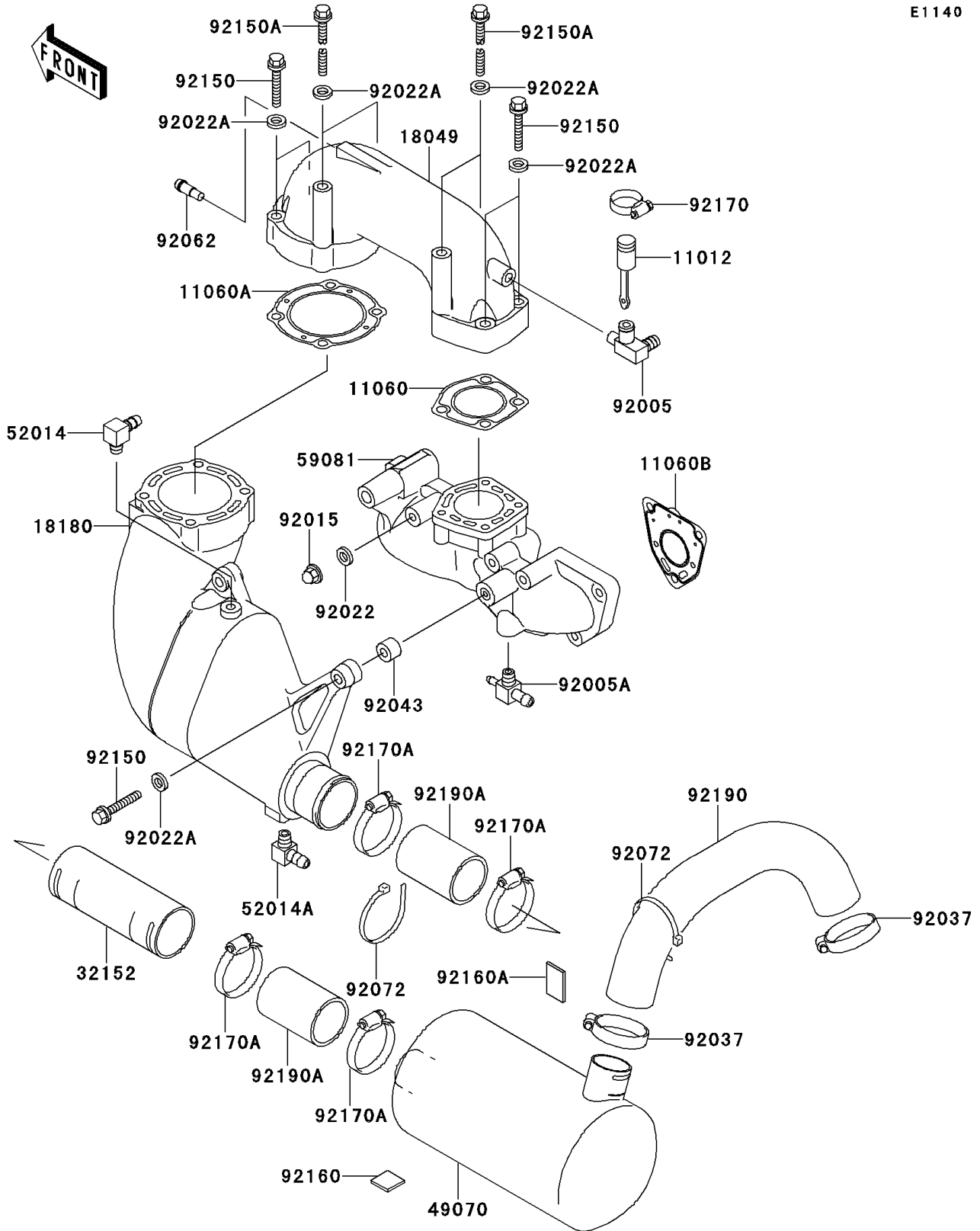


2000 900 STX PARTS DIAGRAM

Muffler(s)

E1140



2000 900 STX PARTS LIST

Muffler(s)

ITEM NAME	PART NUMBER	QUANTITY
CAP (Ref # 11012)	11012-3757	1
GASKET (Ref # 11060)	11060-3754	1
GASKET (Ref # 11060A)	11060-3755	1
GASKET (Ref # 11060B)	11060-3756	3
PIPE-EXHAUST (Ref # 18049)	18049-3753	1
BODY-MUFFLER (Ref # 18180)	18180-3711	1
PIPE (Ref # 32152)	32152-3758	1
MUFFLER-COMP (Ref # 49070)	49070-3734	1
ELBOW (Ref # 52014)	52014-3709	1
ELBOW (Ref # 52014A)	52014-3711	1
MANIFOLD-EXHAUST (Ref # 59081)	59081-3724	1
FITTING (Ref # 92005)	92005-3715	1
FITTING (Ref # 92005A)	92005-3720	1
NUT,CAP,8MM (Ref # 92015)	92015-1371	9
WASHER,8.2X18X1.5 (Ref # 92022)	92022-1964	9
WASHER,10.2X20X1.5 (Ref # 92022A)	92022-3742	10
CLAMP (Ref # 92037)	92037-3738	2
PIN,11X14X12.3 (Ref # 92043)	92043-1266	2
NOZZLE (Ref # 92062)	92062-3705	1
BAND,L=368.3 (Ref # 92072)	92072-3808	2
BOLT,10X50 (Ref # 92150)	92150-3819	6
BOLT,10X125 (Ref # 92150A)	92150-3825	4
DAMPER,25X25 (Ref # 92160)	92160-3864	1
DAMPER,40X25 (Ref # 92160A)	92160-3865	1
CLAMP (Ref # 92170)	92170-3729	1
CLAMP (Ref # 92170A)	92170-3754	4
TUBE,MUFFLER-TAILPIPE (Ref # 92190)	92190-3938	1
TUBE,CHAMBER-MUFLER (Ref # 92190A)	92190-3950	2