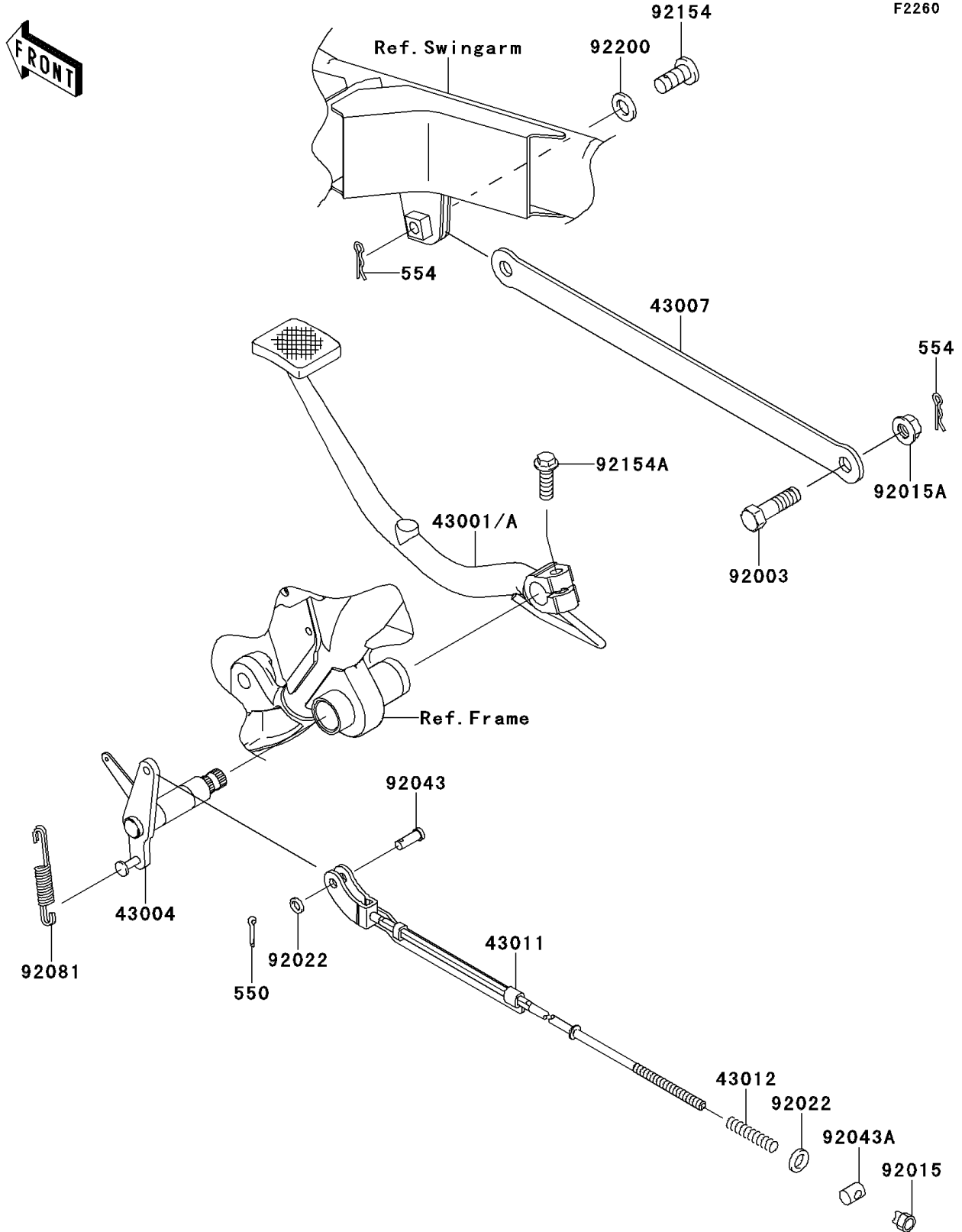


2013 W800 (European) PARTS DIAGRAM

Brake Pedal



2013 W800 (European) PARTS LIST

Brake Pedal

| ITEM NAME | PART NUMBER | QUANTITY |
|-----------------------------------|-------------|----------|
| PIN-COTTER,2.0X15 (Ref # 550) | 550AA2015 | 1 |
| PIN-SNAP (Ref # 554) | 554DA0800 | 2 |
| LEVER-BRAKE,PEDAL (Ref # 43001) | 43001-0135 | 1 |
| SHAFT-BRAKE (Ref # 43004) | 43004-0552 | 1 |
| ROD-TORQUE (Ref # 43007) | 43007-1190 | 1 |
| ROD-BRAKE (Ref # 43011) | 43011-1180 | 1 |
| SPRING,BRAKE ROD (Ref # 43012) | 43012-001 | 1 |
| BOLT,10X35 (Ref # 92003) | 92003-034 | 1 |
| NUT,BRAKE ROD (Ref # 92015) | 92015-042 | 1 |
| NUT,FLANGED,10MM (Ref # 92015A) | 92015-1428 | 1 |
| WASHER,6.3X10.2X1.6 (Ref # 92022) | 92022-1588 | 2 |
| PIN,6X17 (Ref # 92043) | 92043-064 | 1 |
| PIN,BRAKE ROD (Ref # 92043A) | 92043-065 | 1 |
| SPRING,SIDE STAND (Ref # 92081) | 92081-1669 | 1 |
| BOLT,SOCKET,10X30 (Ref # 92154) | 92154-0510 | 1 |
| BOLT,FLANGED,8X25 (Ref # 92154A) | 92154-1019 | 1 |
| WASHER,10.5X19X2.3 (Ref # 92200) | 92200-1042 | 1 |