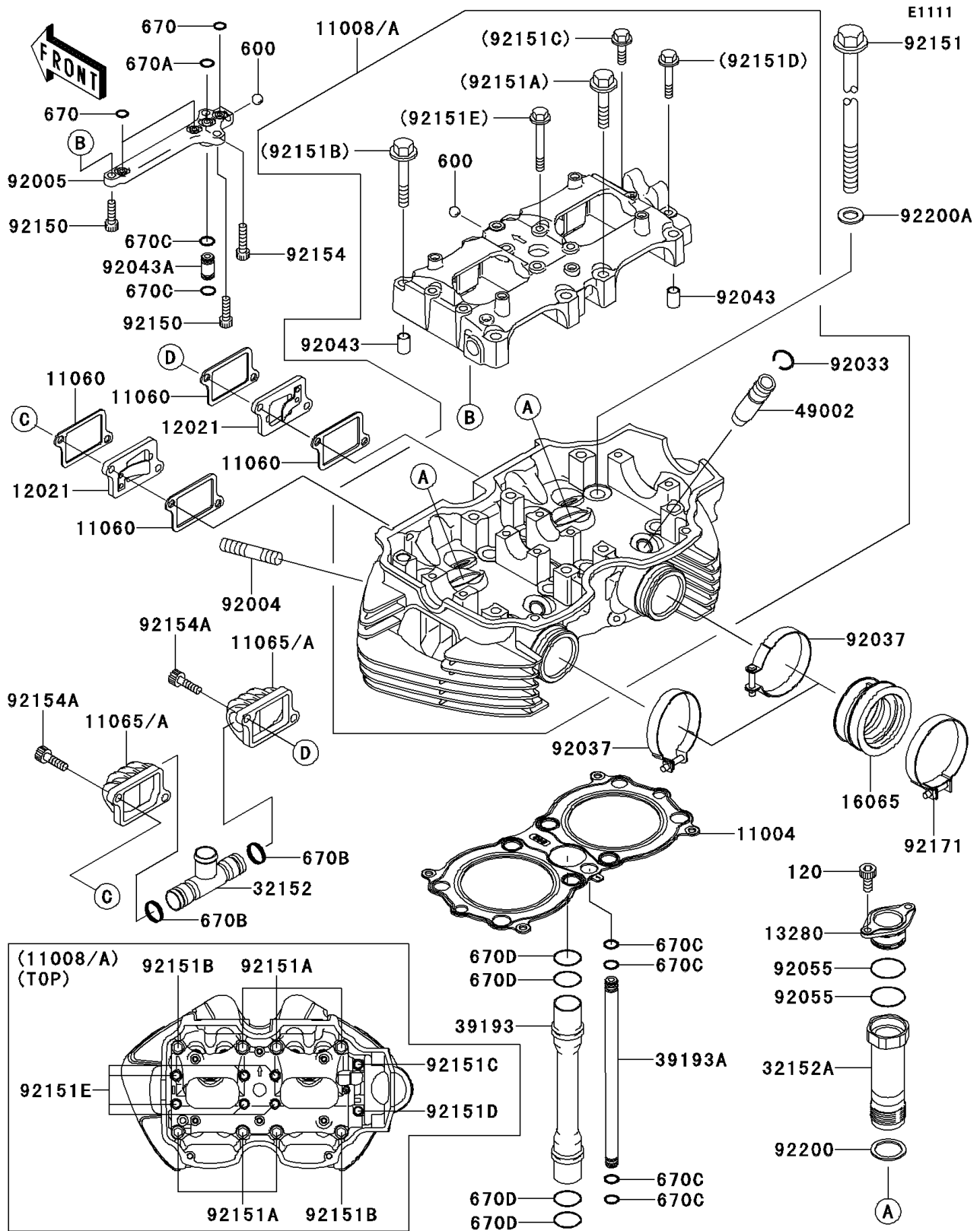


2013 W800 (European) PARTS DIAGRAM

Cylinder Head



2013 W800 (European) PARTS LIST

Cylinder Head

ITEM NAME	PART NUMBER	QUANTITY
BOLT-SOCKET,5X14 (Ref # 120)	120CC0514	4
BALL-STEEL,1/4 (Ref # 600)	600A0800	2
O RING,9MM (Ref # 670)	670D1509	3
O RING,10MM (Ref # 670A)	670D1510	1
O RING,14MM (Ref # 670B)	670D2014	2
O RING (Ref # 670C)	670E1507	6
O RING,22MM (Ref # 670D)	670E2022	4
GASKET-HEAD (Ref # 11004)	11004-0095	1
HEAD-COMP-CYLINDER (Ref # 11008)	11008-0756	1
GASKET,AIR SUCTION VALVE (Ref # 11060)	11060-1886	4
CAP (Ref # 11065A)	11065-1121	2
VALVE-ASSY-REED (Ref # 12021)	12021-1115	2
HOLDER (Ref # 13280)	13280-1118	2
HOLDER-CARBURETOR (Ref # 16065)	16065-0126	2
PIPE,AIR SUCTION VALVE (Ref # 32152)	32152-1900	1
PIPE,PLUG HOLE (Ref # 32152A)	32152-1901	2
PIPE-OIL (Ref # 39193)	39193-0065	1
PIPE-OIL,CASE-HEAD (Ref # 39193A)	39193-1045	1
GUIDE-VALVE (Ref # 49002)	49002-1116	8
STUD,8X30 (Ref # 92004)	92004-1121	4
FITTING (Ref # 92005)	92005-1361	1
RING-SNAP (Ref # 92033)	92033-1247	8
CLAMP (Ref # 92037)	92037-1523	2
PIN,DOWEL,10X14 (Ref # 92043)	92043-1037	2
PIN (Ref # 92043A)	92043-1587	1
RING-O,24.7X1.9 (Ref # 92055)	92055-1592	4
BOLT,SOCKET,6X20 (Ref # 92150)	92150-1880	2
BOLT,11X195 (Ref # 92151)	92151-1452	8
BOLT,8X40 (Ref # 92151A)	92151-1621	6

2013 W800 (European) PARTS LIST

Cylinder Head

ITEM NAME	PART NUMBER	QUANTITY
BOLT,8X50 (Ref # 92151B)	92151-1622	2
BOLT,6X22 (Ref # 92151C)	92151-1623	1
BOLT,6X35 (Ref # 92151D)	92151-1624	1
BOLT,6X50 (Ref # 92151E)	92151-1625	6
BOLT,SOCKET,6X25 (Ref # 92154)	92154-0477	1
BOLT,SOCKET,6X22 (Ref # 92154A)	92154-0478	4
CLAMP (Ref # 92171)	92171-0925	2
WASHER,22X26X1.2 (Ref # 92200)	92200-0746	2
WASHER,11.5X20.5X1.6 (Ref # 92200A)	92200-1128	8