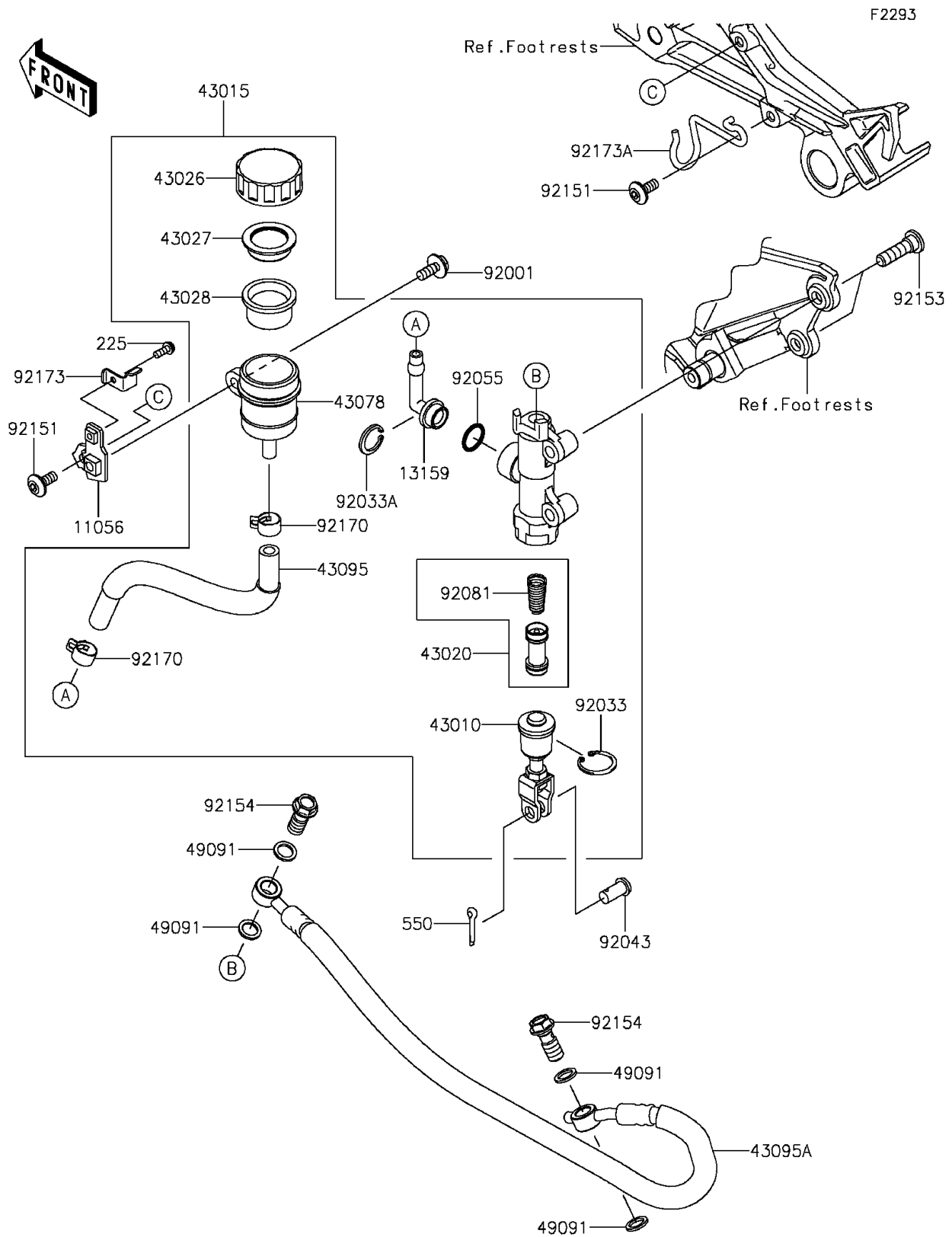


## 2015 NINJA® 300 SE PARTS DIAGRAM

Rear Master Cylinder



## 2015 NINJA® 300 SE PARTS LIST

Rear Master Cylinder

| ITEM NAME                               | PART NUMBER | QUANTITY |
|---|-------------|----------|
| SCREW-PAN-WSP-CROS,4X12 (Ref # 225)     | 225AB0412   | 1        |
| PIN-COTTER,2.0X15 (Ref # 550)           | 550AA2015   | 1        |
| BRACKET (Ref # 11056)                   | 11056-2306  | 1        |
| CONNECTOR (Ref # 13159)                 | 13159-1056  | 1        |
| ROD-ASSY-BRAKE (Ref # 43010)            | 43010-0010  | 1        |
| CYLINDER-ASSY-MASTER,RR (Ref # 43015)   | 43015-0612  | 1        |
| PISTON-COMP-BRAKE (Ref # 43020)         | 43020-0023  | 1        |
| CAP-BRAKE (Ref # 43026)                 | 43026-0009  | 1        |
| PLATE-DIAPHRAGM (Ref # 43027)           | 43027-1053  | 1        |
| DIAPHRAGM (Ref # 43028)                 | 43028-1065  | 1        |
| RESERVOIR (Ref # 43078)                 | 43078-0040  | 1        |
| HOSE-BRAKE (Ref # 43095)                | 43095-0765  | 1        |
| HOSE-BRAKE,RR,520MM (Ref # 43095A)      | 43095-0844  | 1        |
| WASHER-SEAL,10.1X14.5X1.5 (Ref # 49091) | 49091-0001  | 1        |
| BOLT,W/P,6X16 (Ref # 92001)             | 92001-1860  | 1        |
| RING-SNAP,20.9X24.6X1.2 (Ref # 92033)   | 92033-0079  | 1        |
| RING-SNAP,20.5MM (Ref # 92033A)         | 92033-1186  | 1        |
| PIN,8X17 (Ref # 92043)                  | 92043-0104  | 1        |
| RING-O,14.8X2.4 (Ref # 92055)           | 92055-0741  | 1        |
| SPRING,MASTER CYLINDER (Ref # 92081)    | 92081-1737  | 1        |
| BOLT,SOCKET,6X14 (Ref # 92151)          | 92151-1654  | 1        |
| BOLT,SOCKET,8X30 (Ref # 92153)          | 92153-1624  | 1        |
| BOLT,OIL,L=23 (Ref # 92154)             | 92154-0226  | 1        |
| CLAMP,HOSE (Ref # 92170)                | 92170-1091  | 1        |
| CLAMP,RESERVOIR TANK CAP (Ref # 92173)  | 92173-0028  | 1        |
| CLAMP (Ref # 92173A)                    | 92173-0936  | 1        |