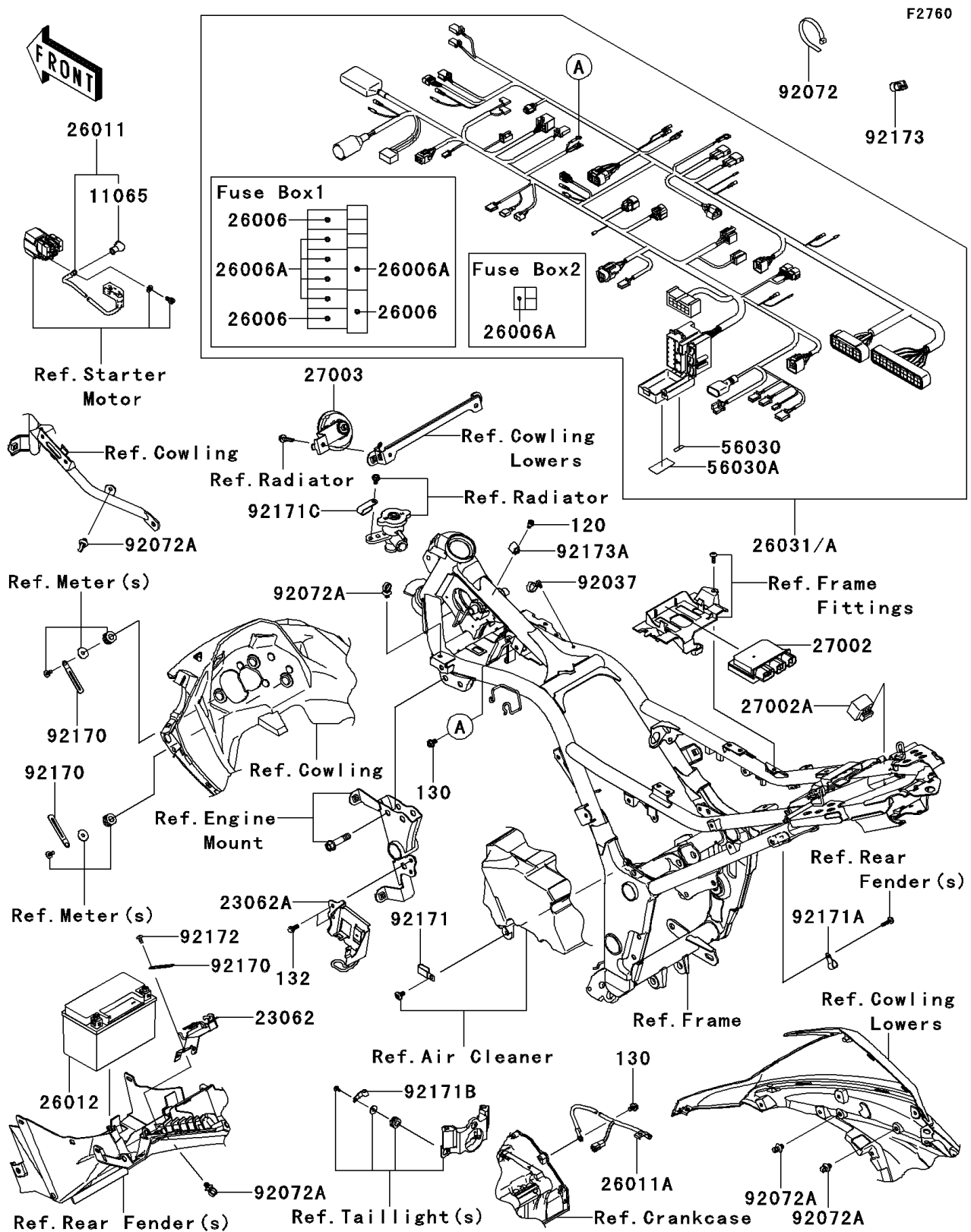


## 2014 Ninja® 300 SE PARTS DIAGRAM

Chassis Electrical Equipment



## 2014 Ninja® 300 SE PARTS LIST

Chassis Electrical Equipment

| ITEM NAME                              | PART NUMBER | QUANTITY |
|--|-------------|----------|
| BOLT-SOCKET,6X10 (Ref # 120)           | 120CA0610   | 1        |
| BOLT-FLANGED,6X10 (Ref # 130)          | 130BB0610   | 1        |
| BOLT-FLANGED-SMALL,6X14 (Ref # 132)    | 132BA0614   | 1        |
| CAP (Ref # 11065)                      | 11065-0213  | 1        |
| BRACKET-COMP (Ref # 23062)             | 23062-0739  | 1        |
| BRACKET-COMP (Ref # 23062A)            | 23062-0781  | 1        |
| FUSE,MINI BLADE,15A,BLUE (Ref # 26006) | 26006-0001  | 1        |
| FUSE,MINI BLADE,10A,RED (Ref # 26006A) | 26006-1078  | 1        |
| WIRE-LEAD,BATTERY(+) (Ref # 26011)     | 26011-0798  | 1        |
| WIRE-LEAD,BATTERY(-) (Ref # 26011A)    | 26011-0803  | 1        |
| BATTERY,FTX9-BS,12V 8AH (Ref # 26012)  | 26012-0660  | 1        |
| RELAY-ASSY (Ref # 27002)               | 27002-0007  | 1        |
| RELAY-ASSY (Ref # 27002A)              | 27002-0059  | 1        |
| HORN (Ref # 27003)                     | 27003-0085  | 1        |
| LABEL,FUSE BOX2 (Ref # 56030)          | 56030-0706  | 1        |
| LABEL,FUSE BOX1 (Ref # 56030A)         | 56030-0779  | 1        |
| CLAMP,SPEED,L=58 (Ref # 92037)         | 92037-1163  | 1        |
| BAND,L=202 (Ref # 92072)               | 92072-1195  | 1        |
| BAND (Ref # 92072A)                    | 92072-1414  | 1        |
| CLAMP (Ref # 92170)                    | 92170-1514  | 1        |
| CLAMP (Ref # 92171)                    | 92171-0305  | 1        |
| CLAMP (Ref # 92171A)                   | 92171-0389  | 1        |
| CLAMP (Ref # 92171B)                   | 92171-1539  | 1        |
| CLAMP (Ref # 92171C)                   | 92171-1597  | 1        |
| SCREW,TAPPING,5X10 (Ref # 92172)       | 92172-0262  | 1        |
| CLAMP (Ref # 92173)                    | 92173-0907  | 1        |
| CLAMP (Ref # 92173A)                   | 92173-0978  | 1        |
| HARNESS,MAIN (Ref # 26031)             | 26031-1510  | 1        |
| HARNESS,MAIN (Ref # 26031A)            | 26031-1511  | 1        |