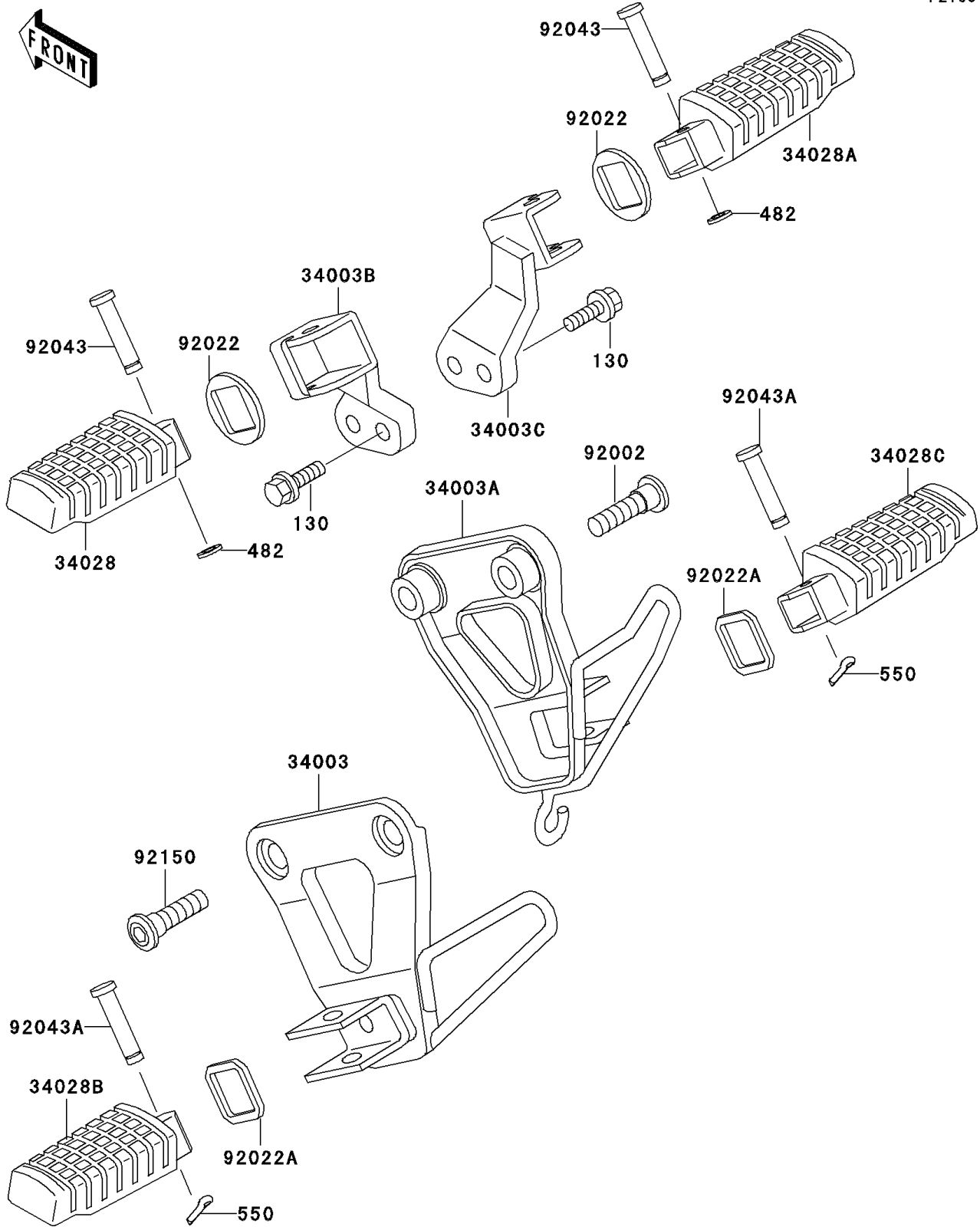


# 2000 KLR650 PARTS DIAGRAM

Footrests

F2160



## 2000 KLR650 PARTS LIST

### Footrests

| ITEM NAME                                     | PART NUMBER   | QUANTITY |
|---|---------------|----------|
| BOLT-FLANGED,8X20 (Ref # 130)                 | 130T0820      | 4        |
| CIRCLIP-TYPE-E (Ref # 482)                    | 482L7000      | 2        |
| PIN-COTTER,2.0X15 (Ref # 550)                 | 550D2015      | 2        |
| HOLDER-STEP,RR,LH,SILVER NO.25 (Ref # 34003)  | 34003-1275-CE | 1        |
| HOLDER-STEP,RR,RH,SILVER NO.25 (Ref # 34003A) | 34003-1276-CE | 1        |
| HOLDER-STEP,FR,LH,SILVER NO.25 (Ref # 34003B) | 34003-1431-CE | 1        |
| HOLDER-STEP,FR,RH,SILVER NO.25 (Ref # 34003C) | 34003-1432-CE | 1        |
| STEP,FR,LH (Ref # 34028)                      | 34028-1193    | 1        |
| STEP,FR,RH (Ref # 34028A)                     | 34028-1194    | 1        |
| STEP,RR,LH (Ref # 34028B)                     | 34028-1195    | 1        |
| STEP,RR,RH (Ref # 34028C)                     | 34028-1196    | 1        |
| BOLT,SOCKET,8X23.5 (Ref # 92002)              | 92002-1598    | 2        |
| WASHER,STEP FITTING (Ref # 92022)             | 92022-1314    | 2        |
| WASHER,STEP FITTING (Ref # 92022A)            | 92022-1797    | 2        |
| PIN,8X36.5 (Ref # 92043)                      | 92043-1339    | 2        |
| PIN,6X28 (Ref # 92043A)                       | 92043-1464    | 2        |
| BOLT,SOCKET,8X20 (Ref # 92150)                | 92150-1839    | 2        |