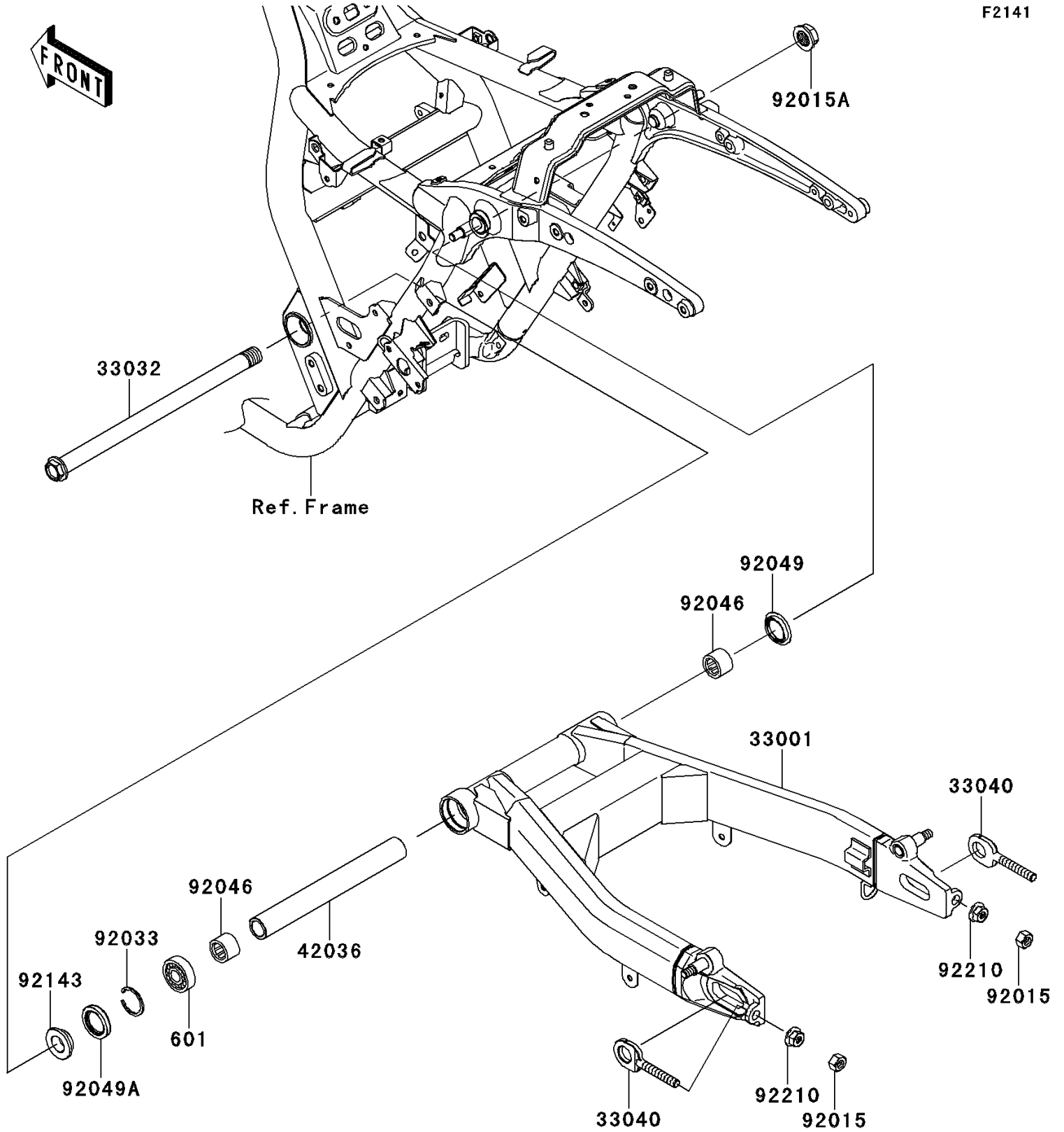


2012 VULCAN® 1700 VAQUERO® PARTS DIAGRAM

Swingarm

F2141



2012 VULCAN® 1700 VAQUERO® PARTS LIST

Swingarm

| ITEM NAME | PART NUMBER | QUANTITY |
|--|----------------|----------|
| BEARING-BALL,#6004 (Ref # 601) | 601A6004 | 1 |
| ARM-COMP-SWING,F.S.BLACK (Ref # 33001) | 33001-0205-18R | 1 |
| SHAFT-SWING ARM (Ref # 33032) | 33032-0031 | 1 |
| ADJUSTER-CHAIN (Ref # 33040) | 33040-0005 | 1 |
| SLEEVE,SWING ARM,L=235.5 (Ref # 42036) | 42036-0059 | 1 |
| NUT,LOCK,10MM (Ref # 92015) | 92015-1494 | 1 |
| NUT,FLANGED,20MM (Ref # 92015A) | 92015-1724 | 1 |
| RING-SNAP,42MM (Ref # 92033) | 92033-1041 | 1 |
| BEARING-NEEDLE,BM2824 (Ref # 92046) | 92046-1202 | 1 |
| SEAL-OIL (Ref # 92049) | 92049-1181 | 1 |
| SEAL-OIL,TC28426.5 (Ref # 92049A) | 92049-1185 | 1 |
| COLLAR,SWING ARM,RH,L=12.5 (Ref # 92143) | 92143-1727 | 1 |
| NUT,FLANGED,10MM (Ref # 92210) | 92210-0349 | 1 |