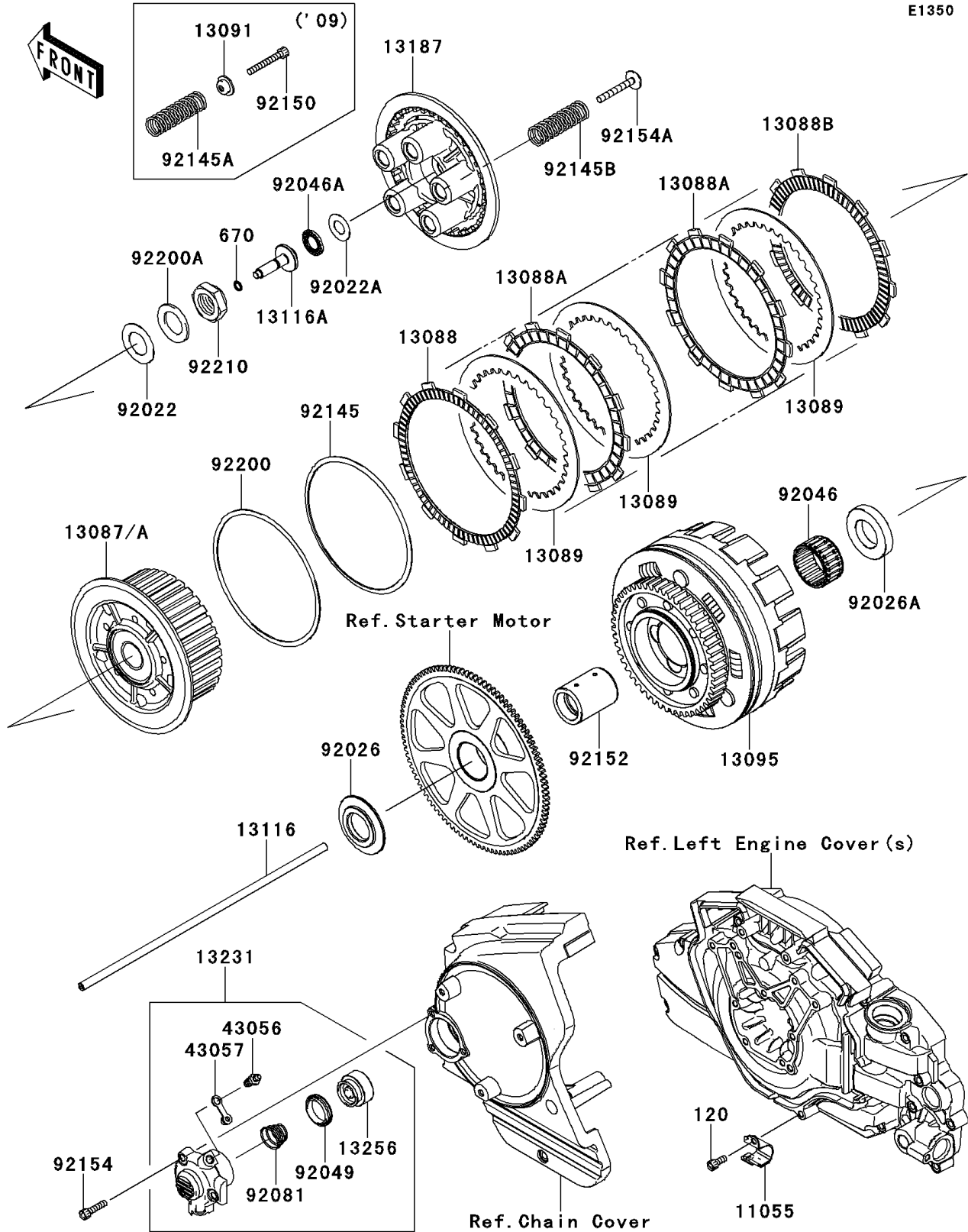


2009 Vulcan 1700 Voyager ABS PARTS DIAGRAM

Clutch

E1350



2009 Vulcan 1700 Voyager ABS PARTS LIST

Clutch

ITEM NAME	PART NUMBER	QUANTITY
BOLT-SOCKET,6X14 (Ref # 120)	120CC0614	1
O RING,7MM (Ref # 670)	670D1507	1
BRACKET (Ref # 11055)	11055-0528	1
HUB-CLUTCH (Ref # 13087)	13087-0005	1
PLATE-FRICTION (Ref # 13088)	13088-0001	1
PLATE-FRICTION (Ref # 13088A)	13088-0011	8
PLATE-FRICTION (Ref # 13088B)	13088-1146	1
PLATE-CLUTCH,T=2.0 (Ref # 13089)	13089-1075	9
HOLDER,CLUTCH SPRING (Ref # 13091)	13091-1041	5
HOUSING-COMP-CLUTCH (Ref # 13095)	13095-0111	1
ROD-PUSH (Ref # 13116)	13116-0027	1
ROD-PUSH (Ref # 13116A)	13116-0033	1
PLATE-CLUTCH OPERATING (Ref # 13187)	13187-0002	1
RELEASE-ASSY-CLUTCH (Ref # 13231)	13231-0003	1
PISTON (Ref # 13256)	13256-1052	1
BREATHER (Ref # 43056)	43056-1055	1
CAP-BREATHER (Ref # 43057)	43057-1001	1
WASHER,25.3X44X1 (Ref # 92022)	92022-1390	1
WASHER,15.1X29X1.0 (Ref # 92022A)	92022-1463	1
SPACER (Ref # 92026)	92026-0124	1
SPACER (Ref # 92026A)	92026-0136	1
BEARING-NEEDLE,K40X48X25V3 (Ref # 92046)	92046-0001	1
BEARING-NEEDLE,AXK1102 (Ref # 92046A)	92046-1052	1
SEAL-OIL,PISTON (Ref # 92049)	92049-1165	1
SPRING,CLUTCH RELEASE (Ref # 92081)	92081-1644	1
SPRING (Ref # 92145)	92145-0033	1
SPRING (Ref # 92145A)	92145-0593	5
BOLT,CLUTCH OPERATING (Ref # 92150)	92150-1855	5
COLLAR,30X40X52.3 (Ref # 92152)	92152-0190	1

2009 Vulcan 1700 Voyager ABS PARTS LIST

Clutch

ITEM NAME	PART NUMBER	QUANTITY
BOLT,SOCKET,6X25 (Ref # 92154)	92154-0085	3
WASHER,140.1X150X1.2 (Ref # 92200)	92200-0015	1
WASHER,25.5X42X2.6 (Ref # 92200A)	92200-0016	1
NUT,25MM (Ref # 92210)	92210-0138	1