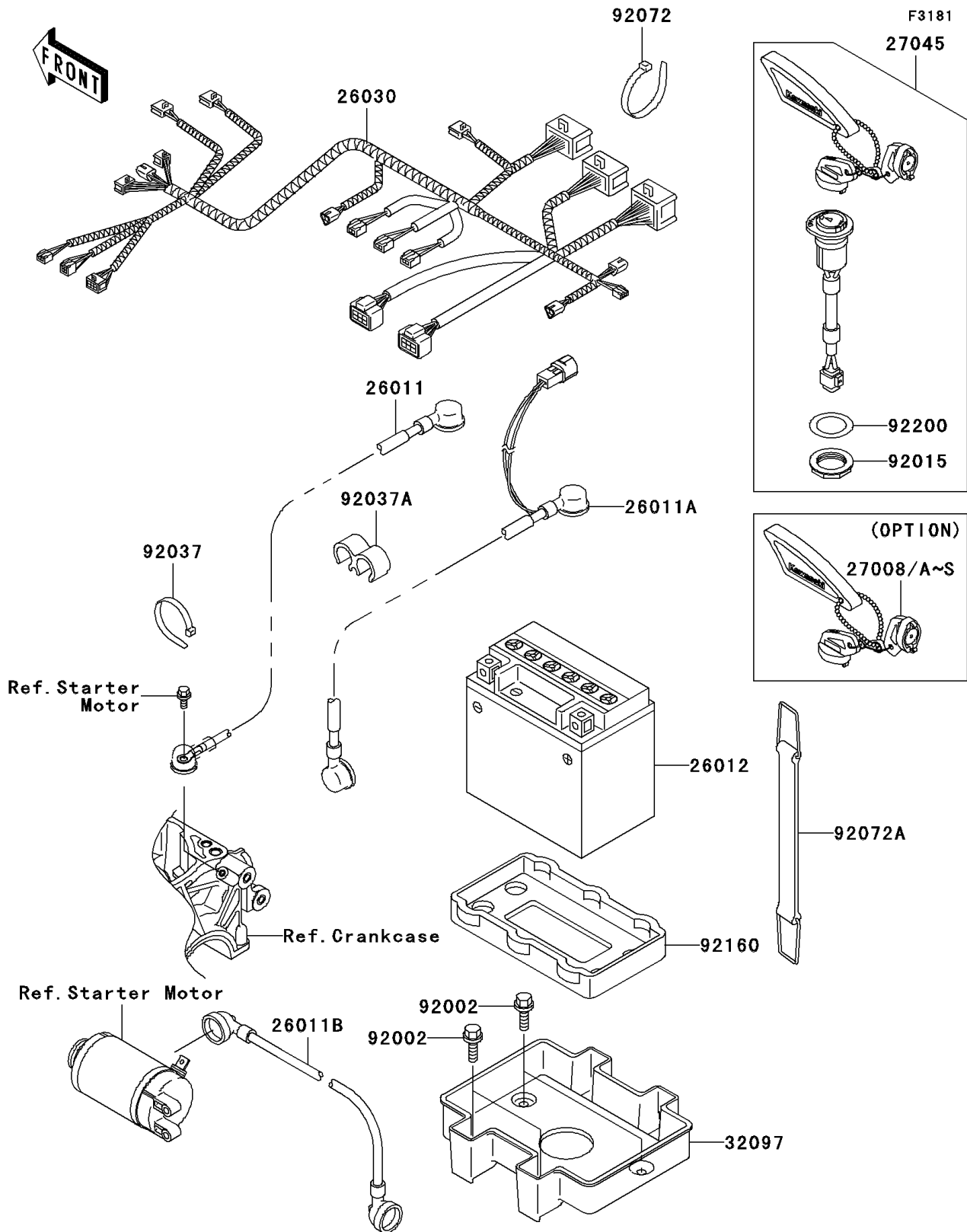


## 2003 1200 STX-R PARTS DIAGRAM

Electrical Equipment



## 2003 1200 STX-R PARTS LIST

Electrical Equipment

| ITEM NAME                                  | PART NUMBER | QUANTITY |
|--|-------------|----------|
| WIRE-LEAD,BATTERY(-)-STARTER (Ref # 26011) | 26011-3876  | 1        |
| WIRE-LEAD,BATTERY(+)-RELAY (Ref # 26011A)  | 26011-3898  | 1        |
| WIRE-LEAD,RELAY-STARTER (Ref # 26011B)     | 26011-3899  | 1        |
| BATTERY,YTX20L-BS,12V 18AH (Ref # 26012)   | 26012-3728  | 1        |
| HARNESS,MAIN (Ref # 26030)                 | 26030-3748  | 1        |
| KEY-LOCK,MAGNETIC SW,#3001 (Ref # 27008)   | 27008-3745  | 1        |
| KEY-LOCK,MAGNETIC SW,#3002 (Ref # 27008A)  | 27008-3746  | 1        |
| KEY-LOCK,MAGNETIC SW,#3003 (Ref # 27008B)  | 27008-3747  | 1        |
| KEY-LOCK,MAGNETIC SW,#3004 (Ref # 27008C)  | 27008-3748  | 1        |
| KEY-LOCK,MAGNETIC SW,#3005 (Ref # 27008D)  | 27008-3749  | 1        |
| KEY-LOCK,MAGNETIC SW,#3006 (Ref # 27008E)  | 27008-3750  | 1        |
| KEY-LOCK,MAGNETIC SW,#3007 (Ref # 27008F)  | 27008-3751  | 1        |
| KEY-LOCK,MAGNETIC SW,#3008 (Ref # 27008G)  | 27008-3752  | 1        |
| KEY-LOCK,MAGNETIC SW,#3009 (Ref # 27008H)  | 27008-3753  | 1        |
| KEY-LOCK,MAGNETIC SW,#3010 (Ref # 27008I)  | 27008-3754  | 1        |
| KEY-LOCK,MAGNETIC SW,#3011 (Ref # 27008J)  | 27008-3755  | 1        |
| KEY-LOCK,MAGNETIC SW,#3012 (Ref # 27008K)  | 27008-3756  | 1        |
| KEY-LOCK,MAGNETIC SW,#3013 (Ref # 27008L)  | 27008-3757  | 1        |
| KEY-LOCK,MAGNETIC SW,#3014 (Ref # 27008M)  | 27008-3758  | 1        |
| KEY-LOCK,MAGNETIC SW,#3015 (Ref # 27008N)  | 27008-3759  | 1        |
| KEY-LOCK,MAGNETIC SW,#3016 (Ref # 27008O)  | 27008-3760  | 1        |
| KEY-LOCK,MAGNETIC SW,#3017 (Ref # 27008P)  | 27008-3761  | 1        |
| KEY-LOCK,MAGNETIC SW,#3018 (Ref # 27008Q)  | 27008-3762  | 1        |
| KEY-LOCK,MAGNETIC SW,#3019 (Ref # 27008R)  | 27008-3763  | 1        |
| KEY-LOCK,MAGNETIC SW,#3020 (Ref # 27008S)  | 27008-3764  | 1        |
| SWITCH-ASSY,MAIN (Ref # 27045)             | 27045-3723  | 1        |
| CASE-BATTERY (Ref # 32097)                 | 32097-3703  | 1        |
| BOLT,6X16 (Ref # 92002)                    | 92002-3728  | 1        |
| NUT (Ref # 92015)                          | 92015-3848  | 1        |

## 2003 1200 STX-R PARTS LIST

Electrical Equipment

| ITEM NAME                  | PART NUMBER | QUANTITY |
|----------------------------|-------------|----------|
| CLAMP (Ref # 92037)        | 92037-1173  | 1        |
| CLAMP,HOSE (Ref # 92037A)  | 92037-1603  | 1        |
| BAND,L=201 (Ref # 92072)   | 92072-3778  | 1        |
| BAND,340X22 (Ref # 92072A) | 92072-3805  | 1        |
| DAMPER (Ref # 92160)       | 92160-3929  | 1        |
| WASHER (Ref # 92200)       | 92200-3736  | 1        |