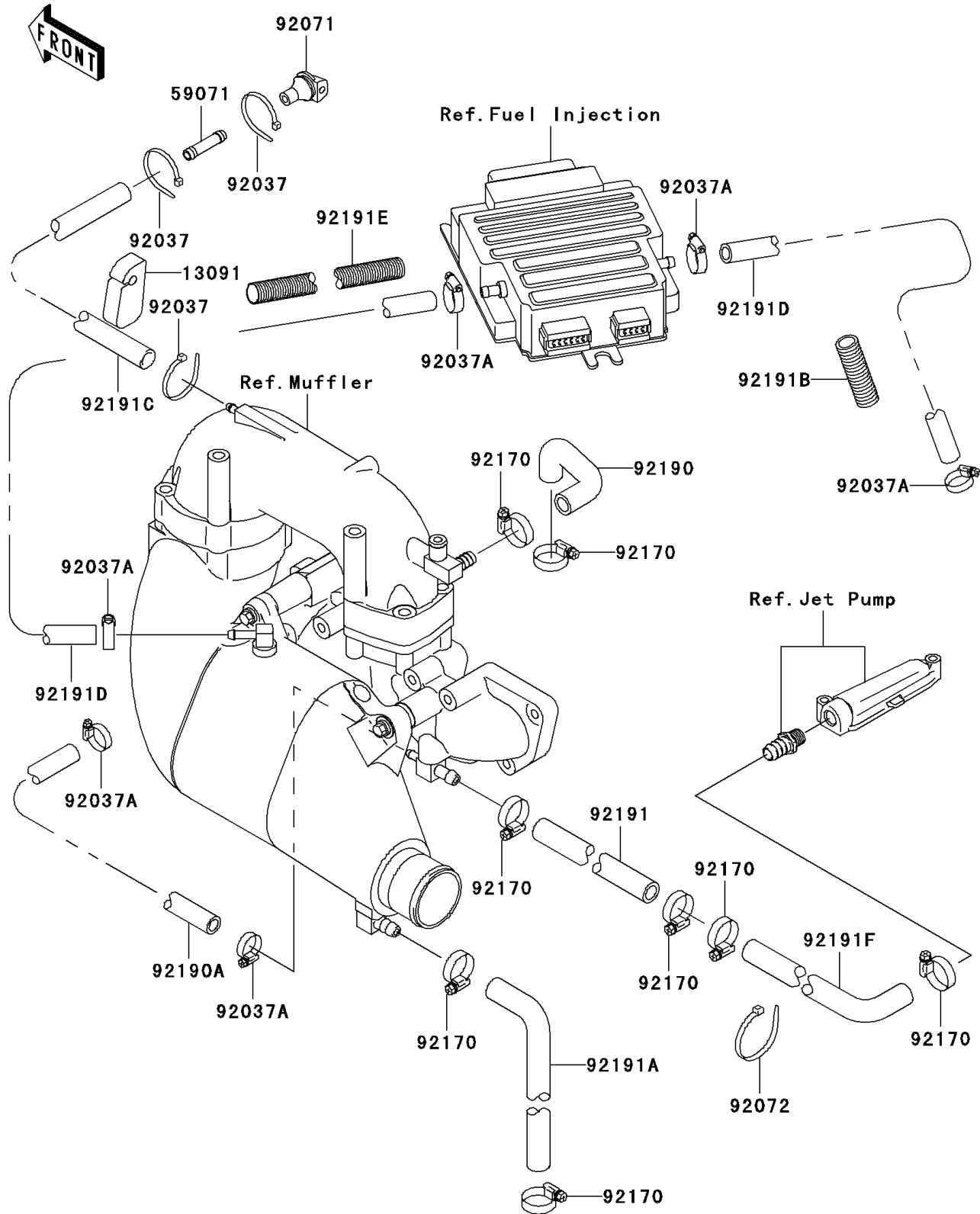


## 2003 1100 STX D.I. PARTS DIAGRAM

Cooling

E3035



## 2003 1100 STX D.I. PARTS LIST

### Cooling

| ITEM NAME                               | PART NUMBER | QUANTITY |
|-----------------------------------------|-------------|----------|
| HOLDER (Ref # 13091)                    | 13091-3712  | 1        |
| JOINT (Ref # 59071)                     | 59071-3764  | 1        |
| CLAMP (Ref # 92037)                     | 92037-1173  | 1        |
| CLAMP (Ref # 92037A)                    | 92037-3726  | 1        |
| GROMMET (Ref # 92071)                   | 92071-3815  | 1        |
| BAND,L=201 (Ref # 92072)                | 92072-3778  | 1        |
| CLAMP (Ref # 92170)                     | 92170-3718  | 1        |
| TUBE,HEAD-EXHAUSTPIPE (Ref # 92190)     | 92190-3955  | 1        |
| TUBE,MANIFOLD-COVER (Ref # 92190A)      | 92190-3974  | 1        |
| TUBE,EXHAUSTMANIFOLD-HULL (Ref # 92191) | 92191-3745  | 1        |
| TUBE,CHAMBER-TAIL PIPE (Ref # 92191A)   | 92191-3850  | 1        |
| TUBE (Ref # 92191B)                     | 92191-3868  | 1        |
| TUBE,7X12X1590 (Ref # 92191C)           | 92191-3874  | 1        |
| TUBE,5.8X11.8X620 (Ref # 92191D)        | 92191-3875  | 1        |
| TUBE (Ref # 92191E)                     | 92191-3916  | 1        |
| TUBE,PUMP-HULL (Ref # 92191F)           | 92191-3974  | 1        |