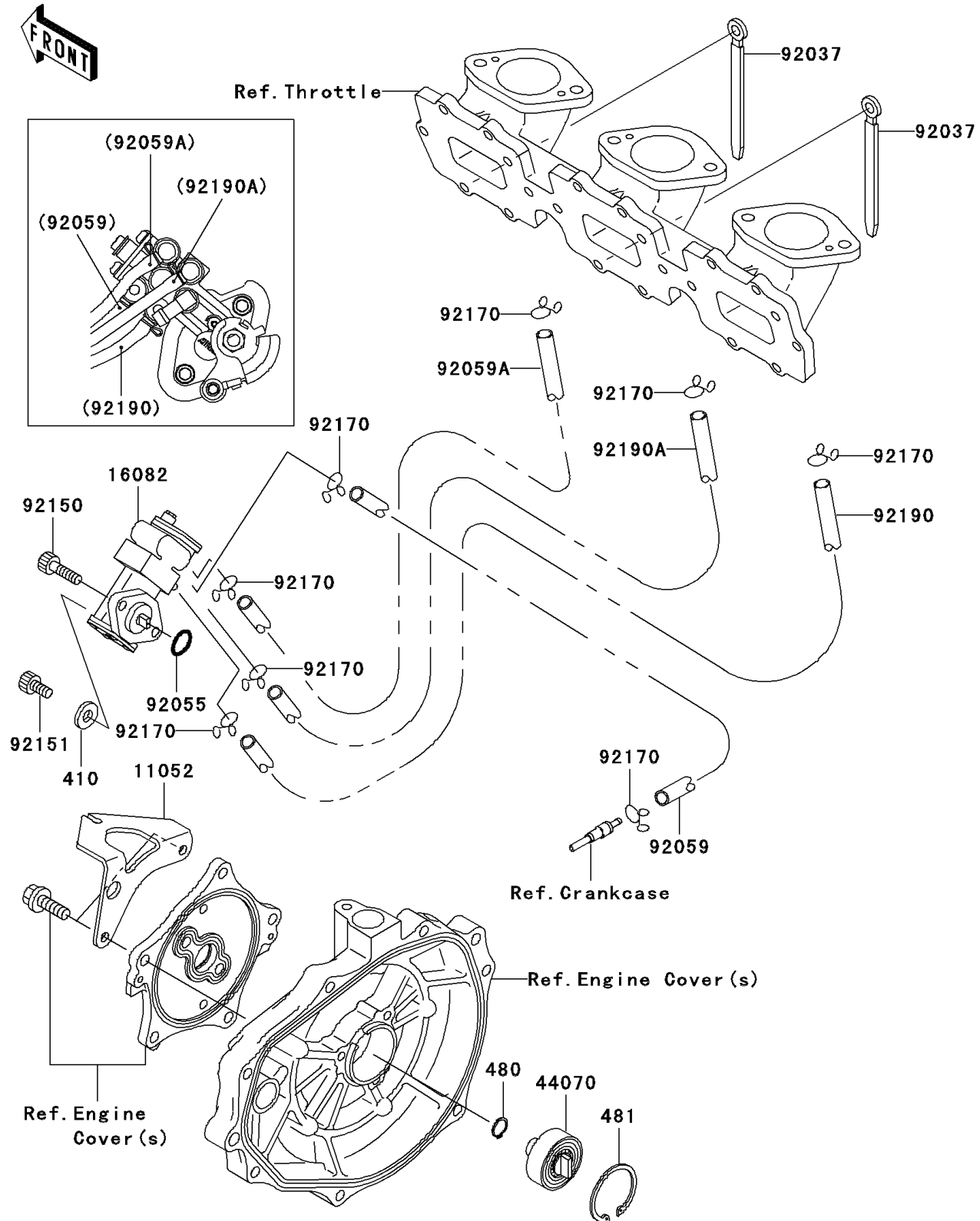


2003 1100 STX D.I. PARTS DIAGRAM

Oil Pump

E1710



2003 1100 STX D.I. PARTS LIST

Oil Pump

ITEM NAME	PART NUMBER	QUANTITY
W-PLAIN-S,5MM (Ref # 410)	410S0500	1
CIRCLIP-TYPE-C,12MM (Ref # 480)	480J1200	1
CIRCLIP-TYPE-C,37MM (Ref # 481)	481J3700	1
BRACKET,CABLE (Ref # 11052)	11052-3764	1
PUMP-ASSY-OIL (Ref # 16082)	16082-3730	1
DAMPER-ASSY (Ref # 44070)	44070-3702	1
CLAMP,L=100 (Ref # 92037)	92037-3736	1
RING-O,19.5X1.5 (Ref # 92055)	92055-055	1
TUBE (Ref # 92059)	92059-3747	1
TUBE,3X6X380 (Ref # 92059A)	92059-3755	1
BOLT,SOCKET,6X25 (Ref # 92150)	92150-3830	1
BOLT,SOCKET (Ref # 92151)	92151-3772	1
CLAMP (Ref # 92170)	92170-3750	1
TUBE,3X6X545 (Ref # 92190)	92190-3907	1
TUBE,3X6X420 (Ref # 92190A)	92190-3945	1