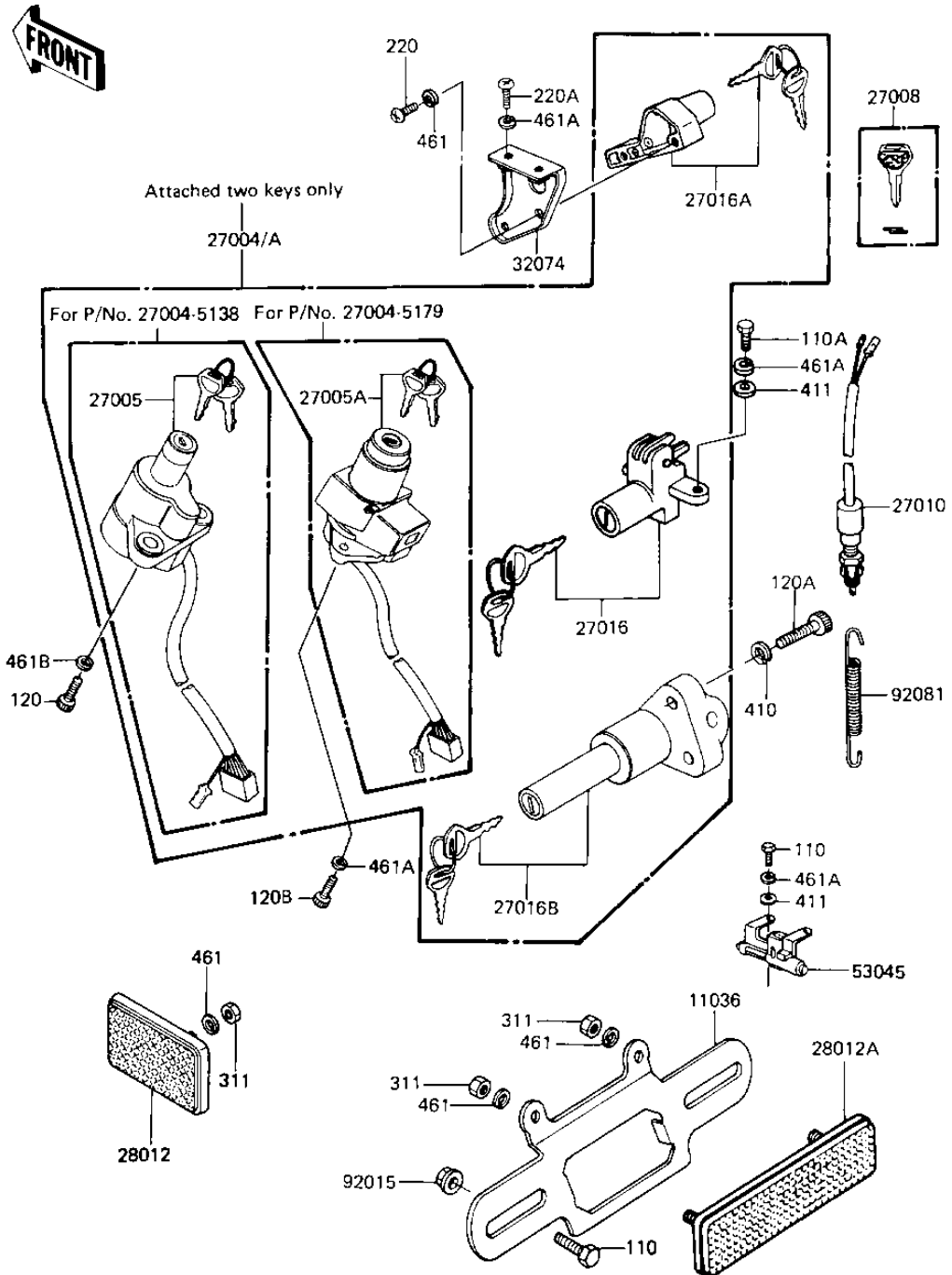


# 1982 Spectre PARTS DIAGRAM

IGNITION SWITCH/LOCKS/REFLECTORS

F2770-0155



# 1982 Spectre PARTS LIST

## IGNITION SWITCH/LOCKS/REFLECTORS

ITEM NAME	PART NUMBER	QUANTITY
BRACKET,REFLECTOR,RR (Ref # 11036)	11036-1150	1
SWITCH-ASSY,ALL (Ref # 27004)	27004-5138	1
SWITCH-ASSY-IGNITION (Ref # 27005)	27005-5019	1
KEY-LOCK,BLANK (Ref # 27008)	27008-1103	1
SWITCH,BRAKE LAMP (Ref # 27010)	27010-1019	1
LOCK ASSY,SEAT (Ref # 27016)	27016-5015	1
LOCK-ASSY,HELMET (Ref # 27016A)	27016-5070	1
LOCK-ASSY,STAND (Ref # 27016B)	27016-5043	1
REFLECTOR,REFLEX(FRON (Ref # 28012)	28012-1003	2
REFLECTOR,REAR REFLEX (Ref # 28012A)	28012-1005	1
BRACKET-LOCK (Ref # 32074)	32074-1026	1
HOOK ASSY,HELMET (Ref # 53045)	53045-1001	1
NUT-6MM (Ref # 92015)	92015-1078	2
SPRING,BRAKE LAMP SWI (Ref # 92081)	92081-1086	1
BOLT-UPSET,6X12 (Ref # 110)	112G0612	4
BOLT-UPSET 6X14 (Ref # 110A)	112B0614	1
BOLT,SOCKET,8X22 (Ref # 120)	120P0822	2
BOLT,SOCKET,8X30 (Ref # 120A)	120P0830	2
SCREW PAN HEAD 5X8 (Ref # 220)	220B0508	2
SCREW PAN HEAD 6X10 (Ref # 220A)	220B0610	2
NUT,5MM (Ref # 311)	311B0500	4
WASHER PLAIN 8MM (Ref # 410)	410B0800	2
WASHER PLAIN 6MM (Ref # 411)	411B0600	3
WASHER SPRING 5MM (Ref # 461)	461F0500	6
WASHER SPRING 6MM (Ref # 461A)	461F0600	5
WASHER SPRING 8MM (Ref # 461B)	461F0800	2