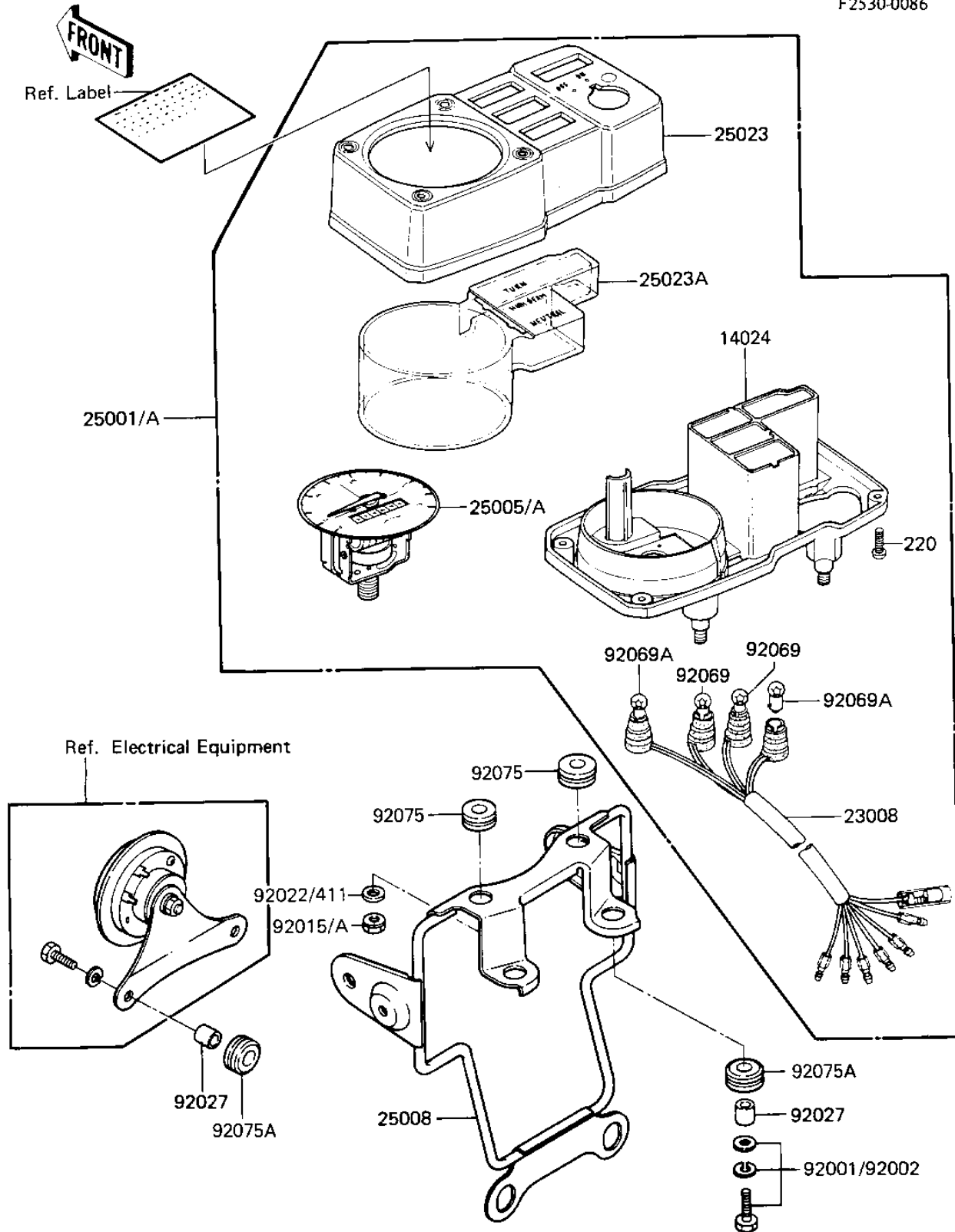


1984 KE100 PARTS DIAGRAM

METERS

F2530-0086



1984 KE100 PARTS LIST

METERS

| ITEM NAME | PART NUMBER | QUANTITY |
|---|-------------|----------|
| COVER,METER,LWR (Ref # 14024) | 14025-1870 | 1 |
| SOCKET-ASSY,METER (Ref # 23008) | 23008-1110 | 1 |
| METER-ASSY,KPH (Canada) (Ref # 25001) | 25001-1247 | 1 |
| METER-ASSY,MPH (Ref # 25001A) | 25001-1267 | 1 |
| SPEEDOMETER,MPH (Ref # 25005) | 25005-1134 | 1 |
| SPEEDOMETER,KPH (Canada) (Ref # 25005A) | 25005-1136 | 1 |
| BRACKET-METER (Ref # 25008) | 25008-1042 | 1 |
| COVER-METER CASE (Ref # 25023) | 25023-1035 | 1 |
| COVER-METER CASE (Ref # 25023A) | 25023-1036 | 1 |
| BOLT,6X25 (Ref # 92002) | 92002-1137 | 1 |
| NUT,LOCK,6MM (Ref # 92015) | 92015-1393 | 1 |
| WASHER 6.5X20X1.6T (Ref # 92022) | 92022-125 | 1 |
| COLLAR,REAR FENDER (Ref # 92027) | 92027-162 | 1 |
| BULB 6V 1.5W (Ref # 92069) | 92069-024 | 1 |
| BULB-6V 3W (Ref # 92069A) | 92069-053 | 1 |
| DAMPER (Ref # 92075) | 92075-1337 | 1 |
| DAMPER RUBBER,RR FENR (Ref # 92075A) | 92075-209 | 1 |
| SCREW PAN HEAD 4X10 (Ref # 220) | 220B0410 | 1 |