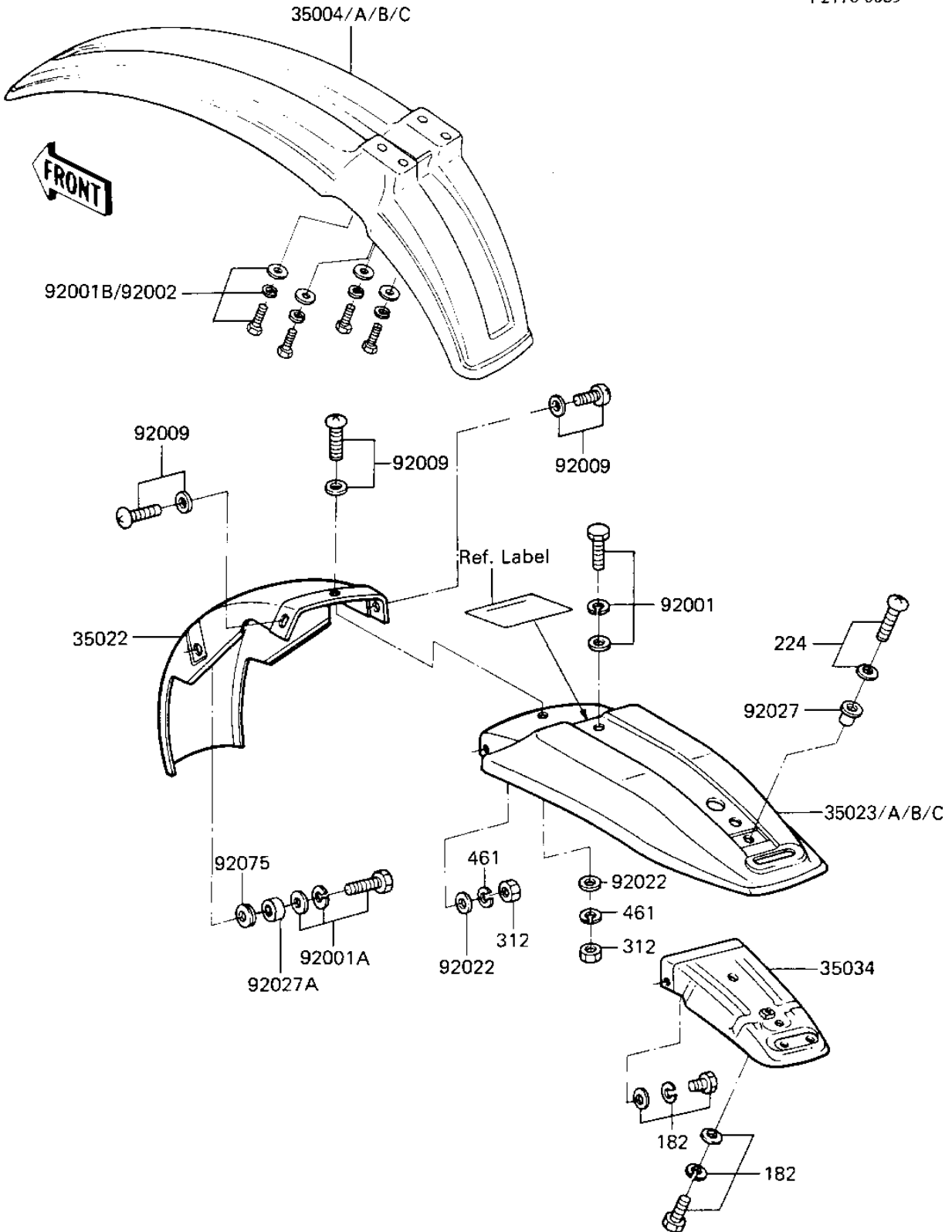


## 1984 KE100 PARTS DIAGRAM

FENDERS

F2170-0089



## 1984 KE100 PARTS LIST

### FENDERS

| ITEM NAME                        | PART NUMBER   | QUANTITY |
|----------------------------------|---------------|----------|
| FENDER-FRONT,S.RED (Ref # 35004) | 35004-1072-6B | 1        |
| FENDER-RR (Ref # 35022)          | 35022-064     | 1        |
| FENDER-REAR,S.RED (Ref # 35023)  | 35023-1039-6B | 1        |
| REINFORCE (Ref # 35034)          | 35034-1075    | 1        |
| BOLT,6X12 (Ref # 92001)          | 92001-1761    | 1        |
| BOLT,W/SP,6X16 (Ref # 92001A)    | 92001-1763    | 1        |
| BOLT,6X16 (Ref # 92002)          | 92002-1075    | 1        |
| SCREW,6X14 (Ref # 92009)         | 92009-1281    | 1        |
| WASHER 6.5X20X1.6T (Ref # 92022) | 92022-125     | 1        |
| COLLAR,REAR FENDER (Ref # 92027) | 92027-1018    | 1        |
| COLLAR (Ref # 92027A)            | 92027-103     | 1        |
| DAMPER RUBBER (Ref # 92075)      | 92075-105     | 1        |
| BOLT-UPSET-WSP (Ref # 182)       | 182B0612      | 1        |
| SCREW,6X14 (Ref # 224)           | 92009-1333    | 1        |
| NUT 6MM (Ref # 312)              | 312B0600      | 1        |
| WASHER SPRING 6MM (Ref # 461)    | 461F0600      | 1        |