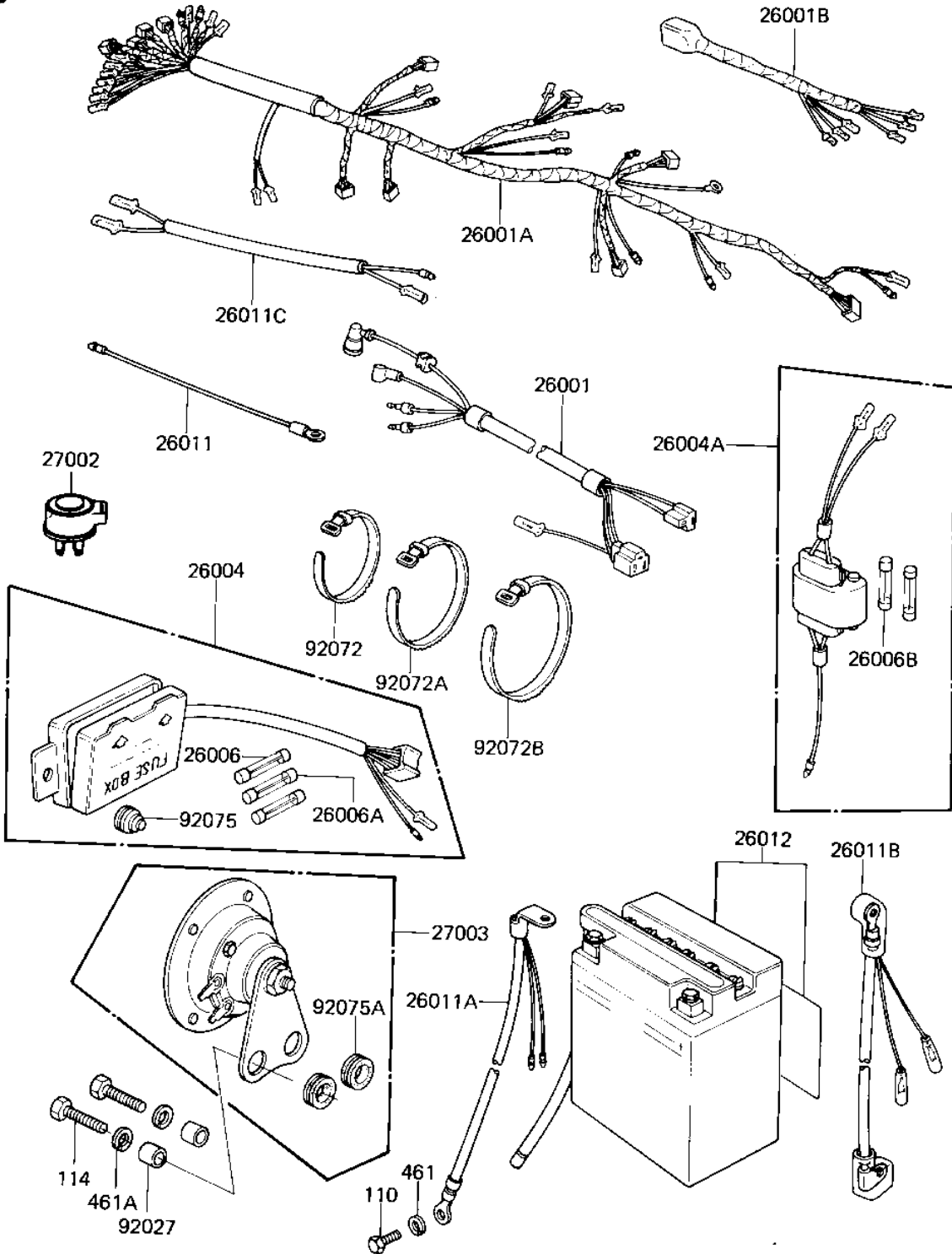


1982 CSR Twin PARTS DIAGRAM

CHASSIS ELECTRICAL EQUIPMENT

F2760-0072



1982 CSR Twin PARTS LIST

CHASSIS ELECTRICAL EQUIPMENT

ITEM NAME	PART NUMBER	QUANTITY
WIRING HARNESS (Ref # 26001)	26001-1024	1
HARNESS,MAIN (Ref # 26001A)	26001-1272	1
WIRING HARNESS,REAR (Ref # 26001B)	26002-063	1
FUSE ASSY (Ref # 26004)	26004-035	1
FUSE-ASSY,ACCESSORY (Ref # 26004A)	26004-1014	1
FUSE 10A (Ref # 26006)	26006-003	3
FUSE-20A (Ref # 26006A)	26006-005	2
FUSE,10A,L=30M/M (Ref # 26006B)	26006-1002	3
LEAD WIRE,SIGNAL LAM (Ref # 26011)	26011-063	2
WIRE-LEAD,BATTERY (Ref # 26011A)	26011-1146	1
WIRE-LEAD (Ref # 26011B)	26011-1131	1
WIRE-LEAD (Ref # 26011C)	26011-1132	1
YUA BAT YB14L-A2 (Ref # 26012)	26012-1008	1
RELAY-TURN SIGNAL (Ref # 27002)	27002-011	1
HORN (Ref # 27003)	27003-074	1
COLLAR,HORN FITTING (Ref # 92027)	92027-271	2
BAND,SHORT (Ref # 92072)	92072-030	2
BAND,MIDDLE (Ref # 92072A)	92072-031	3
BAND,WIRING HARNESS (Ref # 92072B)	92072-056	3
DAMPER RUBBER,FUSE (Ref # 92075)	92075-279	1
DAMPER RUBBER,HORN M (Ref # 92075A)	92075-294	2
BOLT-UPSET,6X12 (Ref # 110)	112G0612	1
BOLT-SMALL-UPSET 8X2 (Ref # 114)	115G0825	2
WASHER SPRING 6MM (Ref # 461)	461F0600	1
WASHER SPRING 8MM (Ref # 461A)	461F0800	2