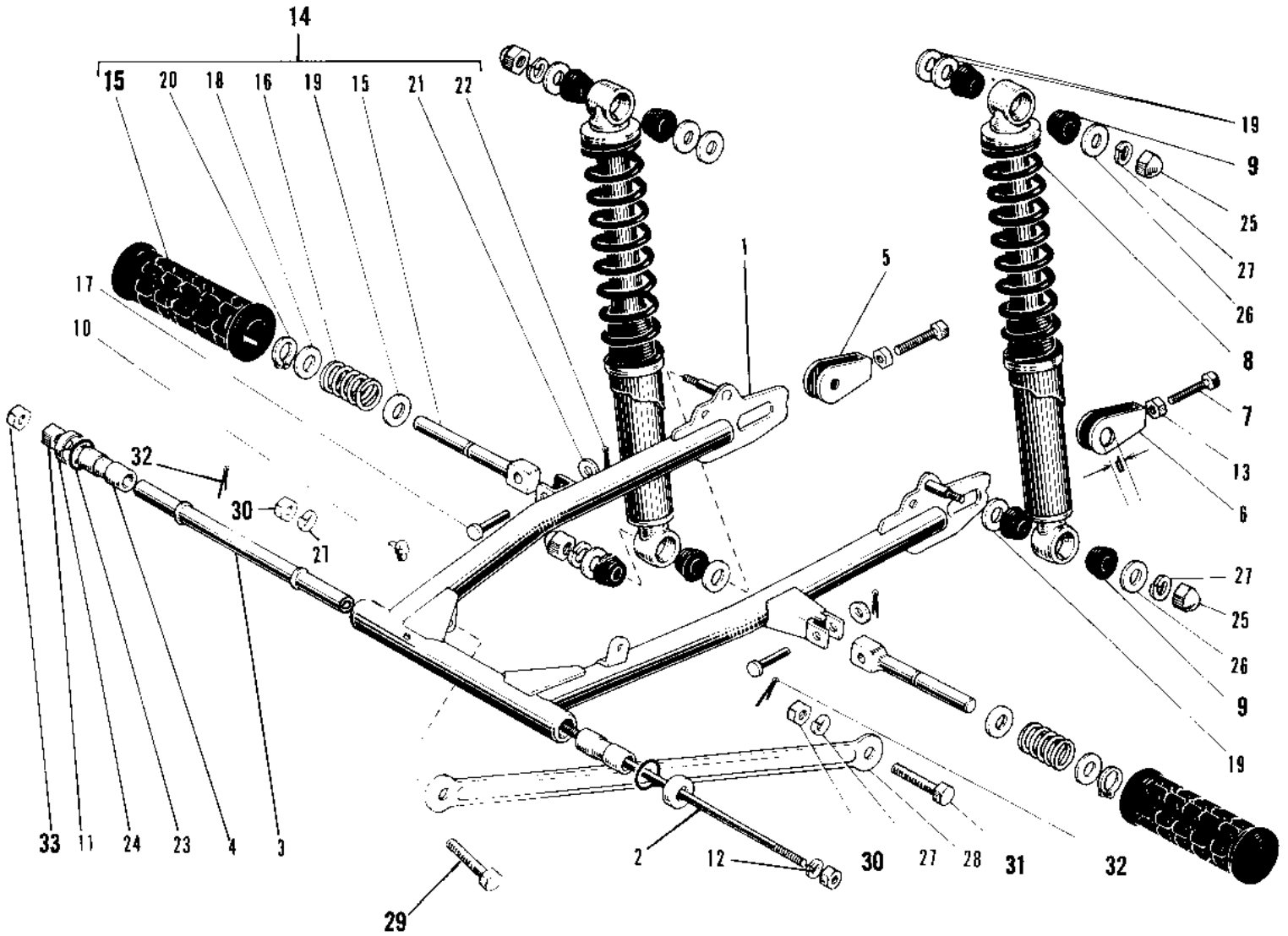


1969 Sidewinder PARTS DIAGRAM

SWING ARM/SHOCK ABSORBERS



1969 Sidewinder PARTS LIST

SWING ARM/SHOCK ABSORBERS

| ITEM NAME | PART NUMBER | QUANTITY |
|---------------------------------|-------------|----------|
| ARM SWINGING (Ref # 1) | 33001-010 | |
| SHAFT SWING ARM PIVOT (Ref # 2) | 33032-022 | |
| COLLAR SWING ARM (Ref # 3) | 33036-001 | |
| SLEEVE SWING ARM (Ref # 4) | 33034-001 | |
| ADJUSTER CHAIN R.H (Ref # 5) | 33040-024 | |
| ADJUSTER CHAIN R.H (Ref # 5) | 33040-030 | |
| ADJUSTER CHAIN L.H (Ref # 6) | 33040-031 | |
| ADJUSTER CHAIN L.H (Ref # 6) | 33040-031 | |
| BOLT CHAIN ADJUST (Ref # 7) | 92001-009 | |
| BOLT,8X50 (Ref # 7) | 92001-1399 | |
| SHOCK ABSBR RR (Ref # 8) | 45014-051 | |
| BUSH RUBB RR SHCK ABS (Ref # 9) | 45017-002 | |
| GREASE NIPPLE (Ref # 10) | 92005-002 | |
| NUT,12MM (Ref # 11) | 314G1200A | |
| NUT-HEX-FINE (Ref # 11) | 314B1200 | |
| WASHER SPRING 12MM (Ref # 12) | 461F1200 | |
| NUT 6MM (Ref # 13) | 312B0600 | |
| NUT 8MM (Ref # 13) | 312B0800 | |
| FOOTREST ASSY REAR (Ref # 14) | 34027-004 | |
| RUBBER REAR FOOTREST (Ref # 15) | 92076-007 | |
| SPRING FOOTREST FOLD (Ref # 16) | 34031-001 | |
| PIN FOOTREST FIT (Ref # 17) | 92043-047 | |
| WASHER FOLDING PEG (Ref # 18) | 92022-050 | |
| WASHER PLAIN 14MM (Ref # 19) | 410B1400 | |
| CIRCLIP 14MM (Ref # 20) | 480J1400 | |
| WASHER PLAIN 8MM (Ref # 21) | 410B0800 | |
| PIN COTTER 2.5X16 (Ref # 22) | 550D2516 | |
| BUSH SHOCK ABSORBER (Ref # 23) | 92092-004 | |
| HOLDER DUST SHIELD (Ref # 24) | 33035-001 | |

1969 Sidewinder PARTS LIST

SWING ARM/SHOCK ABSORBERS

| ITEM NAME | PART NUMBER | QUANTITY |
|----------------------------------|-------------|----------|
| NUT SHOCK ABSORBER (Ref # 25) | 92020-003 | |
| WASHER-PL-10.5X26X2.3 (Ref # 26) | 92022-044 | |
| WASHER SPRING 10MM (Ref # 27) | 461F1000 | |
| TORQUE LINK REAR BRK (Ref # 28) | 43007-018 | |
| BOLT TORQUE LINK FIT (Ref # 29) | 92003-017 | |
| NUT,10MM (Ref # 30) | 314B1000 | |
| BOLT HEX HEAD 10X25 (Ref # 31) | 92003-003 | |
| PIN COTTER 2.0X15 (Ref # 32) | 550D2015 | |
| NUT-HEX-FINE,12MM (Ref # 33) | 315B1200 | |
| NUT-HEX-FINE,12MM (Ref # 33) | 315B1200 | |