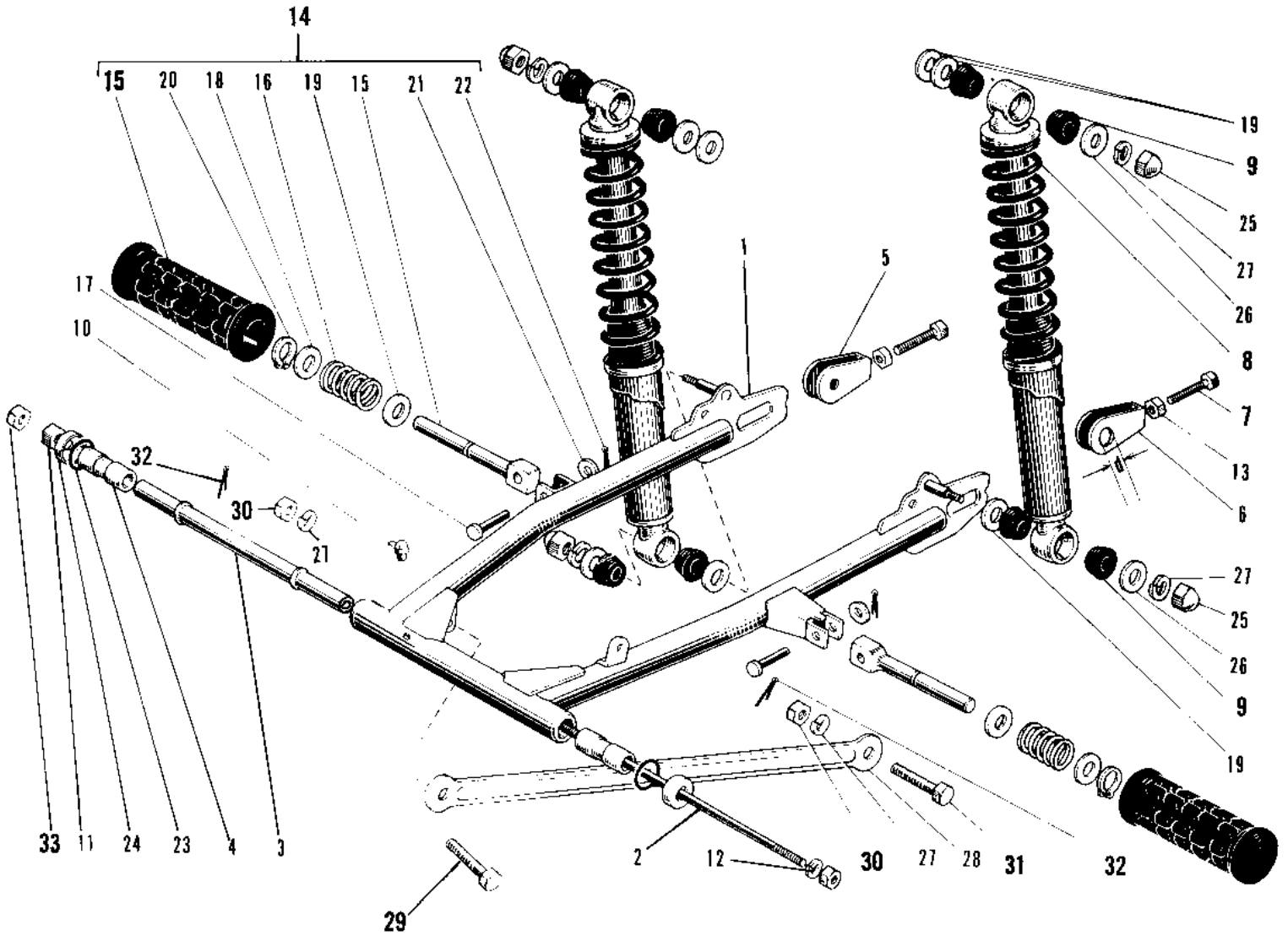


1969 Sidewinder PARTS DIAGRAM SWING ARM/SHOCK ABSORBERS



1969 Sidewinder PARTS LIST

SWING ARM/SHOCK ABSORBERS

ITEM NAME	PART NUMBER	QUANTITY
ARM SWINGING (Ref # 1)	33001-010	1
SHAFT SWING ARM PIVOT (Ref # 2)	33032-022	1
COLLAR SWING ARM (Ref # 3)	33036-001	1
SLEEVE SWING ARM (Ref # 4)	33034-001	1
ADJUSTER CHAIN R.H (Ref # 5)	33040-024	1
ADJUSTER CHAIN R.H (Ref # 5)	33040-030	1
ADJUSTER CHAIN L.H (Ref # 6)	33040-031	2
BOLT CHAIN ADJUST (Ref # 7)	92001-009	1
BOLT,8X50 (Ref # 7)	92001-1399	1
SHOCK ABSBR RR (Ref # 8)	45014-051	1
BUSH RUBB RR SHCK ABS (Ref # 9)	45017-002	1
GREASE NIPPLE (Ref # 10)	92005-002	1
NUT,12MM (Ref # 11)	314G1200A	1
NUT-HEX-FINE (Ref # 11)	314B1200	1
WASHER SPRING 12MM (Ref # 12)	461F1200	1
NUT 6MM (Ref # 13)	312B0600	1
NUT 8MM (Ref # 13)	312B0800	1
FOOTREST ASSY REAR (Ref # 14)	34027-004	1
RUBBER REAR FOOTREST (Ref # 15)	92076-007	1
SPRING FOOTREST FOLD (Ref # 16)	34031-001	1
PIN FOOTREST FIT (Ref # 17)	92043-047	1
WASHER FOLDING PEG (Ref # 18)	92022-050	1
WASHER PLAIN 14MM (Ref # 19)	410B1400	1
CIRCLIP 14MM (Ref # 20)	480J1400	1
WASHER PLAIN 8MM (Ref # 21)	410B0800	1
PIN COTTER 2.5X16 (Ref # 22)	550D2516	1
BUSH SHOCK ABSORBER (Ref # 23)	92092-004	1
HOLDER DUST SHIELD (Ref # 24)	33035-001	1
NUT SHOCK ABSORBER (Ref # 25)	92020-003	1

1969 Sidewinder PARTS LIST

SWING ARM/SHOCK ABSORBERS

ITEM NAME	PART NUMBER	QUANTITY
WASHER-PL-10.5X26X2.3 (Ref # 26)	92022-044	1
WASHER SPRING 10MM (Ref # 27)	461F1000	1
TORQUE LINK REAR BRK (Ref # 28)	43007-018	1
BOLT TORQUE LINK FIT (Ref # 29)	92003-017	1
NUT,10MM (Ref # 30)	314B1000	1
BOLT HEX HEAD 10X25 (Ref # 31)	92003-003	1
PIN COTTER 2.0X15 (Ref # 32)	550D2015	1
NUT-HEX-FINE,12MM (Ref # 33)	315B1200	2