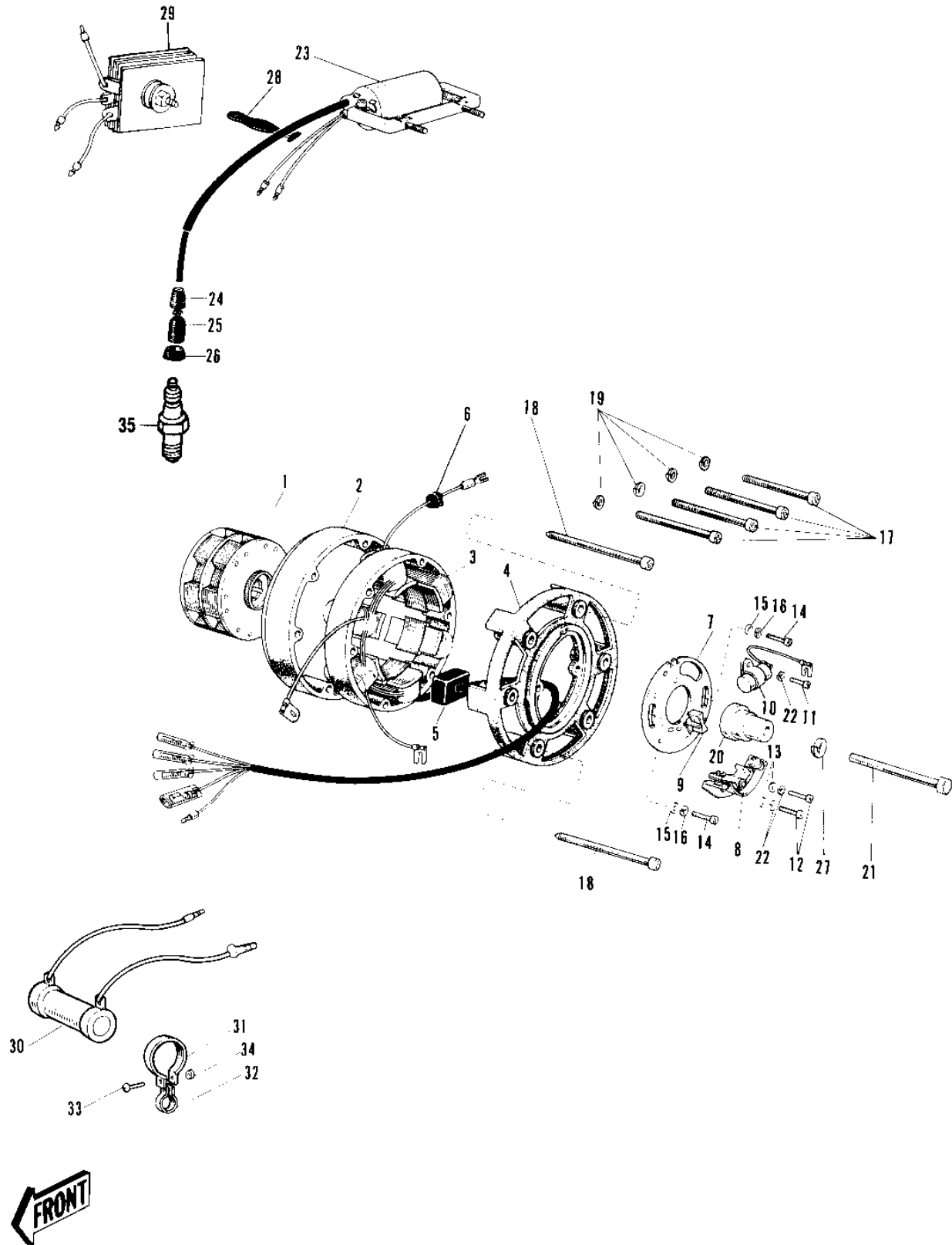


1969 Sidewinder PARTS DIAGRAM

IGNITION/GENERATOR/RECTIFIER



R
—

1969 Sidewinder PARTS LIST

IGNITION/GENERATOR/RECTIFIER

ITEM NAME	PART NUMBER	QUANTITY
MAGNETO (Ref # 1-22)	21002-013	1
ROTOR (Ref # 1)	21007-015	1
UNAVAILABLE IN PRICE BOOK (Ref # 2)	21004-007	1
STATOR (Ref # 3)	21003-009	1
FRONT COVER (Ref # 4)	21005-006	1
GROMMET ENGINE HARN A (Ref # 5)	21017-004	1
GROMMET ENG RUBBER B (Ref # 6)	92071-013	1
PLATE CONTACT BREAKER (Ref # 7)	21021-002	1
BREAKER ASSY CONTACT (Ref # 8)	21008-010	1
UNAVAILABLE IN PRICE BOOK (Ref # 9)	21019-017	1
CONDENSER (Ref # 10)	21013-019	1
SCREW PAN HEAD 4X6 (Ref # 11)	220B0406	1
SCREW PAN HEAD 4X8 (Ref # 12)	220B0408	1
WASHER PLAIN 4MM (Ref # 13)	410B0400	1
SCREW PAN HEAD 5X10 (Ref # 14)	220B0510	1
WASHER PLAIN 5MM (Ref # 15)	410B0500	1
WASHER SPRING 5MM (Ref # 16)	461F0500	1
SCREW PAN HEAD 6X55 (Ref # 17)	220B0655	1
SCREW PAN HEAD 5X80 (Ref # 18)	21023-008	1
SCREW PAN HEAD 5X80 (Ref # 18)	220E0580A	1
WASHER SPRING 6MM (Ref # 19)	461F0600	1
CAM (Ref # 20)	21014-005	1
BOLT HEX HEAD 8X63 (Ref # 21)	114B0863	1
WASHER SPRING 4MM (Ref # 22)	461F0400	1
COIL IGNITION (Ref # 23)	21121-030	1
GROMMET (Ref # 24)	92071-517	1
CAP-SPARK PLUG (Ref # 25)	21130-016	1
GROMMET PLUG CAP A (Ref # 26)	21131-002	1
WASHER SPRING 8MM (Ref # 27)	461F0800	1

1969 Sidewinder PARTS LIST

IGNITION/GENERATOR/RECTIFIER

ITEM NAME	PART NUMBER	QUANTITY
BAND RUBBER (Ref # 28)	92072-018	1
RECTIFIER (Ref # 29)	21061-009	1
RESISTOR (Ref # 30)	21154-001	1
CLAMP (Ref # 31)	92037-048	1
CLAMP-RESISTOR (Ref # 32)	92037-049	1
SCREW PAN HEAD 6X12 (Ref # 33)	220B0612	1
NUT 6MM (Ref # 34)	311B0600	1
SPARK PLUG B9HS (Ref # 35)	B9HS	4