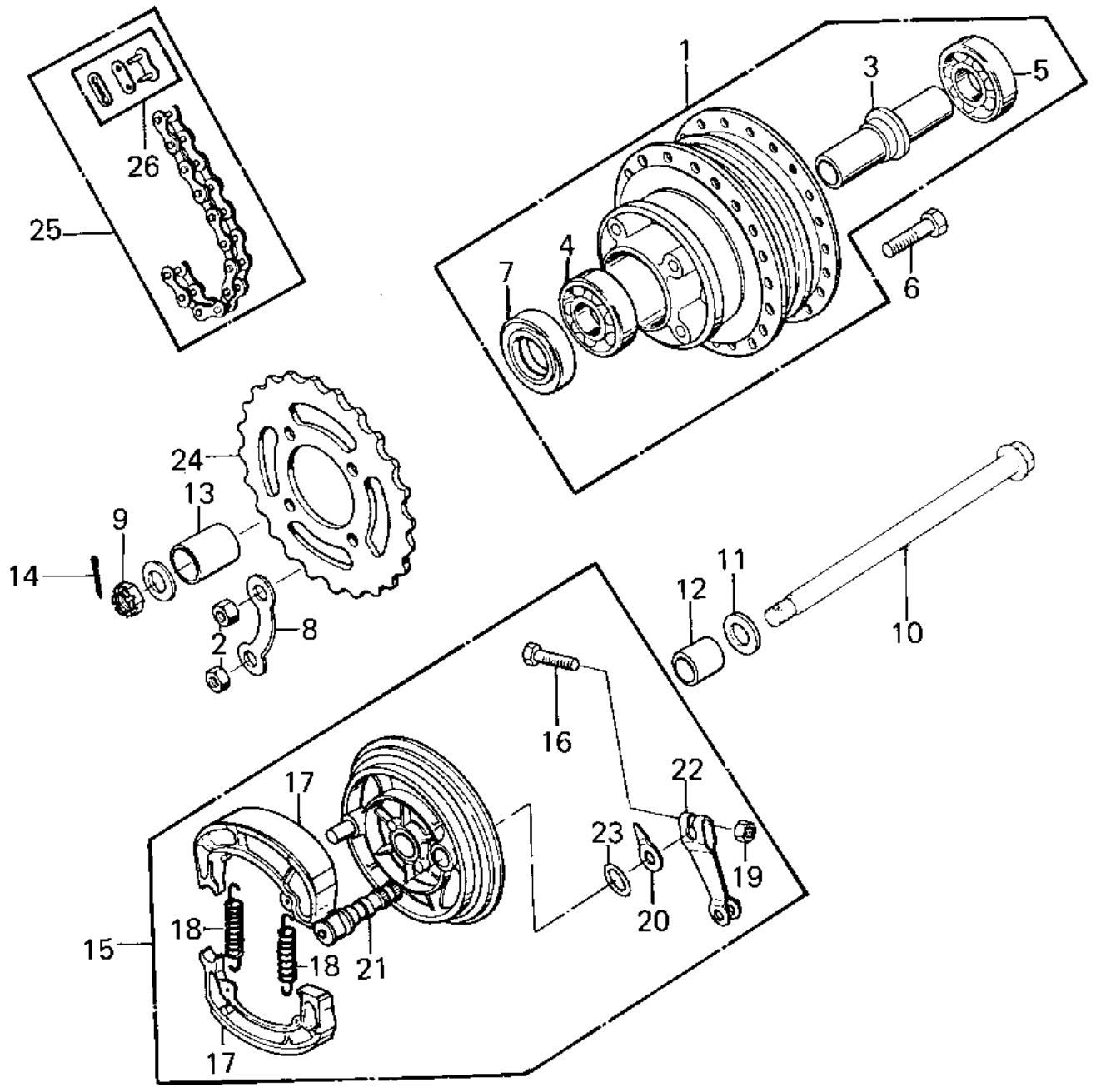


# 1981 KD80 PARTS DIAGRAM

REAR HUB/BRAKE/CHAIN



# 1981 KD80 PARTS LIST

## REAR HUB/BRAKE/CHAIN

| ITEM NAME                        | PART NUMBER   | QUANTITY |
|----------------------------------|---------------|----------|
| DRUM-ASSY,RR BRK,BUFF (Ref # 1)  | 41034-1002-80 |          |
| NUT,8MM (Ref # 2)                | 311B0800      |          |
| NUT,8M/M (Ref # 2)               | 317B0800      |          |
| SPACER RR HUB BEARING (Ref # 3)  | 42010-003     |          |
| BEARING BALL #6301 (Ref # 4)     | 601B6301      |          |
| BEARING BALL #6301Z (Ref # 5)    | 601B6301Z     |          |
| BOLT REAR SPROCKET (Ref # 6)     | 92001-021     |          |
| OIL SEAL RR BRK DRUM (Ref # 7)   | 92052-001     |          |
| WASHER RR SPRCKT LOCK (Ref # 8)  | 92088-003     |          |
| NUT CASTLE 12MM (Ref # 9)        | 321B1200      |          |
| AXLE,12X206 (Ref # 10)           | 41068-1091    |          |
| WASHER PLAIN 12MM (Ref # 11)     | 411B1200      |          |
| COLLAR-REAR HUB R.H (Ref # 12)   | 42032-002     |          |
| COLLAR,REAR AXLE (Ref # 13)      | 42032-044     |          |
| PIN COTTER 3.0X25 (Ref # 14)     | 550D3025      |          |
| PANEL-ASY,RR BRK,BUFF (Ref # 15) | 42006-063-80  |          |
| BOLT-UPSET (Ref # 16)            | 112G0630      |          |
| SHOE-BRAKE (Ref # 17)            | 41048-1085    |          |
| SPRING,BRAKE SHOE (Ref # 18)     | 92081-1766    |          |
| NUT,6MM (Ref # 19)               | 41072-007     |          |
| INDICATOR,BKSHOE (Ref # 20)      | 41085-003     |          |
| CAM SHAFT,REAR BRAKE (Ref # 21)  | 42026-018     |          |
| LEVER,REAR BRAKE PANL (Ref # 22) | 42029-027     |          |
| "O" RING,11MM (Ref # 23)         | 92055-004     |          |
| REAR SPROCKET 39T (Ref # 24)     | 42041-045     |          |
| REAR SPROCKET 37T (Ref # 24)     | 42041-020     |          |
| CHAIN,DRIVE,EK428 98L (Ref # 25) | 92057-1092    |          |
| JOINT-CHAIN (Ref # 26)           | 92058-1014    |          |