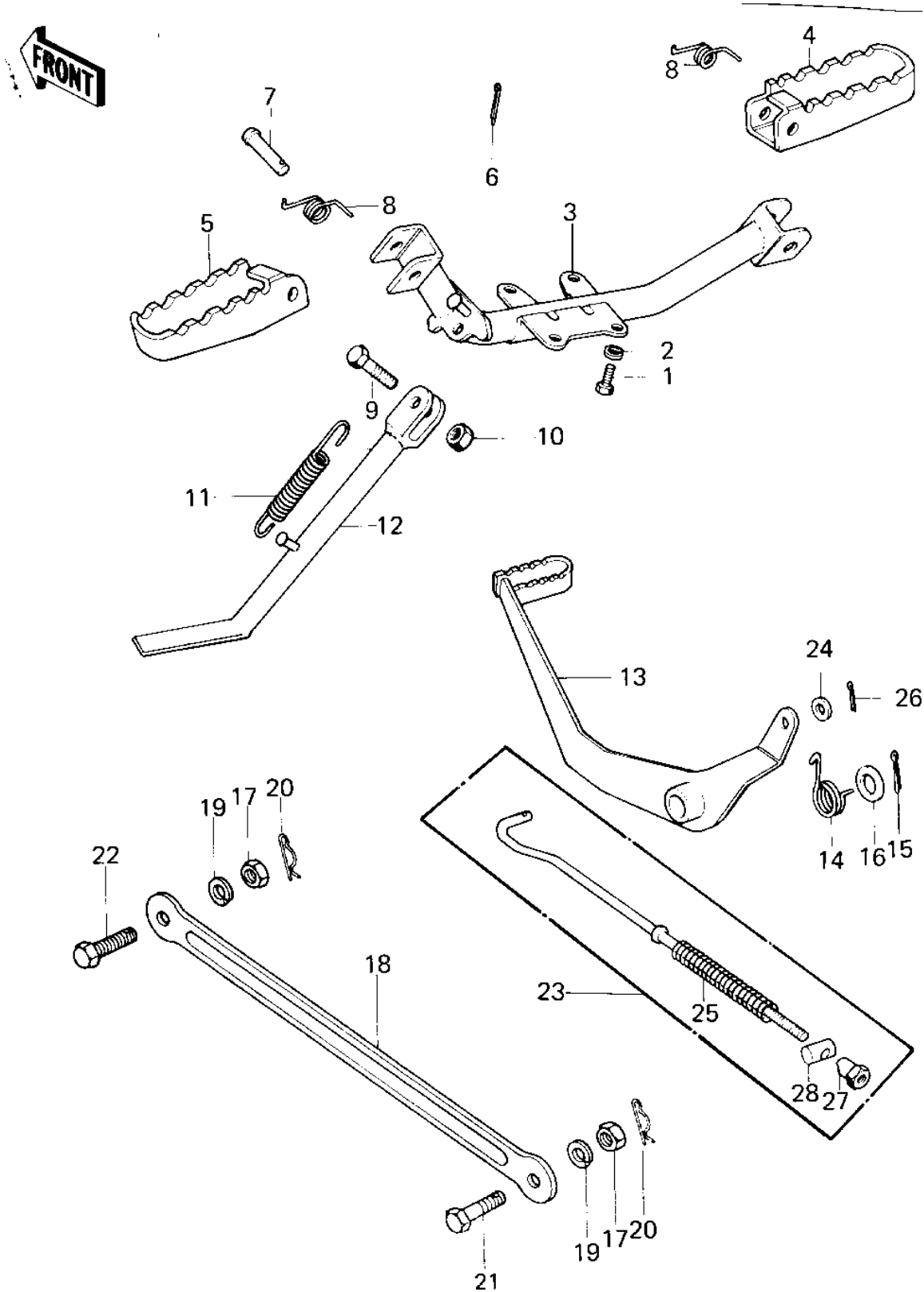


# 1980 KD80 PARTS DIAGRAM

FOOTRESTS/STAND/BRAKE PEDAL



# 1980 KD80 PARTS LIST

## FOOTRESTS/STAND/BRAKE PEDAL

| ITEM NAME                       | PART NUMBER | QUANTITY |
|---------------------------------|-------------|----------|
| BOLT-SMALL-UPSET,8X18 (Ref # 1) | 115G0818    | 4        |
| BOLT-SMALL-UPSET,8X18 (Ref # 1) | 115G0818    | 4        |
| WASHER SPRING 8MM (Ref # 2)     | 461F0800    | 4        |
| BAR,FOOTREST (Ref # 3)          | 34002-047   | 1        |
| BAR,R.H FOOTREST (Ref # 4)      | 34028-023   | 1        |
| BAR,L.H FOOTREST (Ref # 5)      | 34028-024   | 1        |
| PIN COTTER 2.5X16 (Ref # 6)     | 550D2516    | 2        |
| PIN-FOOTREST BAR FIT (Ref # 7)  | 92043-080   | 2        |
| SPRING,FOOTRESTBAR (Ref # 8)    | 92083-027   | 2        |
| BOLT,10X28 (Ref # 9)            | 113G1028    | 1        |
| NUT,10MM (Ref # 10)             | 314B1000    | 1        |
| SPRING MAIN STAND (Ref # 11)    | 34023-005   | 1        |
| STAND-SIDE (Ref # 12)           | 34024-1013  | 1        |
| PEDAL,BRAKE (Ref # 13)          | 43001-062   | 1        |
| SPRING-BRAKE PEDAL (Ref # 14)   | 43005-020   | 1        |
| PIN COTTER 3.0X30 (Ref # 15)    | 550D3030    | 1        |
| WASHER BRAKE PEDAL (Ref # 16)   | 92022-085   | 1        |
| NUT,10MM (Ref # 17)             | 314B1000    | 2        |
| TORQUE LINK,RR BRAKE (Ref # 18) | 43007-037   | 1        |
| WASHER SPRING 10MM (Ref # 19)   | 461F1000    | 2        |
| PIN,SNAP (Ref # 20)             | 554A0800    | 2        |
| BOLT HEX HEAD 10X25 (Ref # 21)  | 92003-003   | 1        |
| BOLT TORQUE LINK FIT (Ref # 22) | 92003-017   | 1        |
| ROD ASSY,REAR BRAKE (Ref # 23)  | 43010-5004  | 1        |
| WASHER PLAIN 6MM (Ref # 24)     | 410B0600    | 1        |
| SPRING,BRAKE ROD (Ref # 25)     | 43012-001   | 1        |
| PIN COTTER 2.0X15 (Ref # 26)    | 550D2015    | 1        |
| NUT-BRAKE ROD ADJUST (Ref # 27) | 92015-042   | 1        |
| PIN BRAKE (Ref # 28)            | 92043-039   | 1        |