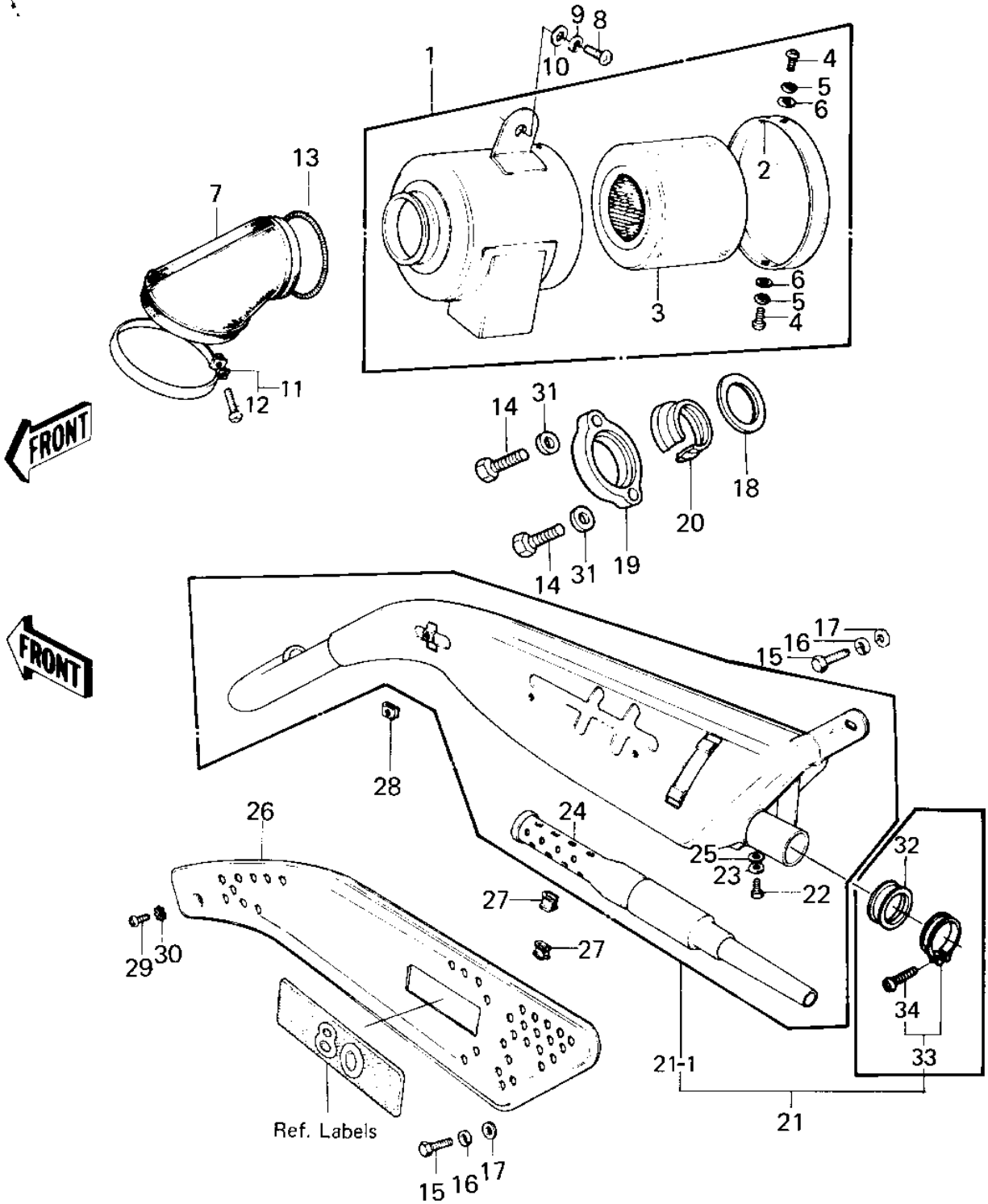


# 1980 KD80 PARTS DIAGRAM

AIR CLEANER/MUFFLER



# 1980 KD80 PARTS LIST

## AIR CLEANER/MUFFLER

| ITEM NAME                        | PART NUMBER  | QUANTITY |
|----------------------------------|--------------|----------|
| AIR CLEANER ASY,BLACK (Ref # 1)  | 11010-068-10 | 1        |
| CAP,AIR CLEANER (Ref # 2)        | 11012-041    | 1        |
| ELEMENT,AIR,CLNR (Ref # 3)       | 11013-044    | 1        |
| SCREW PAN HEAD 5X8 (Ref # 4)     | 220B0508     | 2        |
| WASHER SPRING 5MM (Ref # 5)      | 461F0500     | 2        |
| WASHER PLAIN 5MM (Ref # 6)       | 410B0500     | 2        |
| CONNECTOR,AIR CLEANER (Ref # 7)  | 11026-009    | 1        |
| SCREW PAN HEAD 6X12 (Ref # 8)    | 220B0612     | 1        |
| WASHER SPRING 6MM (Ref # 9)      | 461F0600     | 1        |
| WASHER PLAIN 6MM (Ref # 10)      | 410B0600     | 1        |
| CLAMP-AIR CLEANER (Ref # 11)     | 92037-068    | 1        |
| SCREW PAN HEAD 6X35 (Ref # 12)   | 220B0635     | 1        |
| SPRING COIL (Ref # 13)           | 92081-047    | 1        |
| BOLT-UPSET,6X35 (Ref # 14)       | 112G0635     | 2        |
| BOLT-SMALL-UPSET,8X16 (Ref # 15) | 115G0816     | 2        |
| BOLT-SMALL-UPSET,8X16 (Ref # 15) | 115G0816     | 2        |
| WASHER SPRING 8MM (Ref # 16)     | 461F0800     | 2        |
| WASHER PLAIN 8MM (Ref # 17)      | 411B0800     | 2        |
| GASKET,EXHAUST PIPE H (Ref # 18) | 11009-1866   | 1        |
| HOLDER,EX PIPE,BLACK (Ref # 19)  | 18069-035-21 | 1        |
| INSERT-EXHAUST HOLDER (Ref # 20) | 18070-005    | 1        |
| MUFFLER ASSY (Ref # 21)          | 18001-1113   | 1        |
| MUFFLER (Ref # 21-1)             | 18001-5116   | 1        |
| BOLT,6X10 (Ref # 22)             | 112G0610     | 2        |
| WASHER PLAIN 6MM (Ref # 23)      | 410B0600     | 2        |
| BAFFLE TUBE (Ref # 24)           | 49099-1027   | 1        |
| WASHER-PLAIN (Ref # 25)          | 92022-183    | 2        |
| COVER,MUFFLER (Ref # 26)         | 18064-018    | 1        |
| INSULATOR (Ref # 27)             | 18065-007    | 2        |

# 1980 KD80 PARTS LIST

## AIR CLEANER/MUFFLER

| ITEM NAME                        | PART NUMBER | QUANTITY |
|----------------------------------|-------------|----------|
| INSULATOR-HEAT (Ref # 28)        | 18065-009   | 1        |
| SCREW PAN HEAD 6X12 (Ref # 29)   | 220B0612    | 1        |
| WASHER LOCK 6MM (Ref # 30)       | 463H0600    | 1        |
| WASHER SPRING 6MM (Ref # 31)     | 461F0600    | 2        |
| CONNECTOR,BAFFLETUBE (Ref # 32)  | 92093-1042  | 1        |
| CONNECTOR,BAFFLETUBE (Ref # 32)  | 92093-1042  | 1        |
| CLAMP,CARBURETOR HLDR (Ref # 33) | 92037-178   | 1        |
| SCREW-PAN-CROS,5X25 (Ref # 34)   | 220B0525    | 1        |