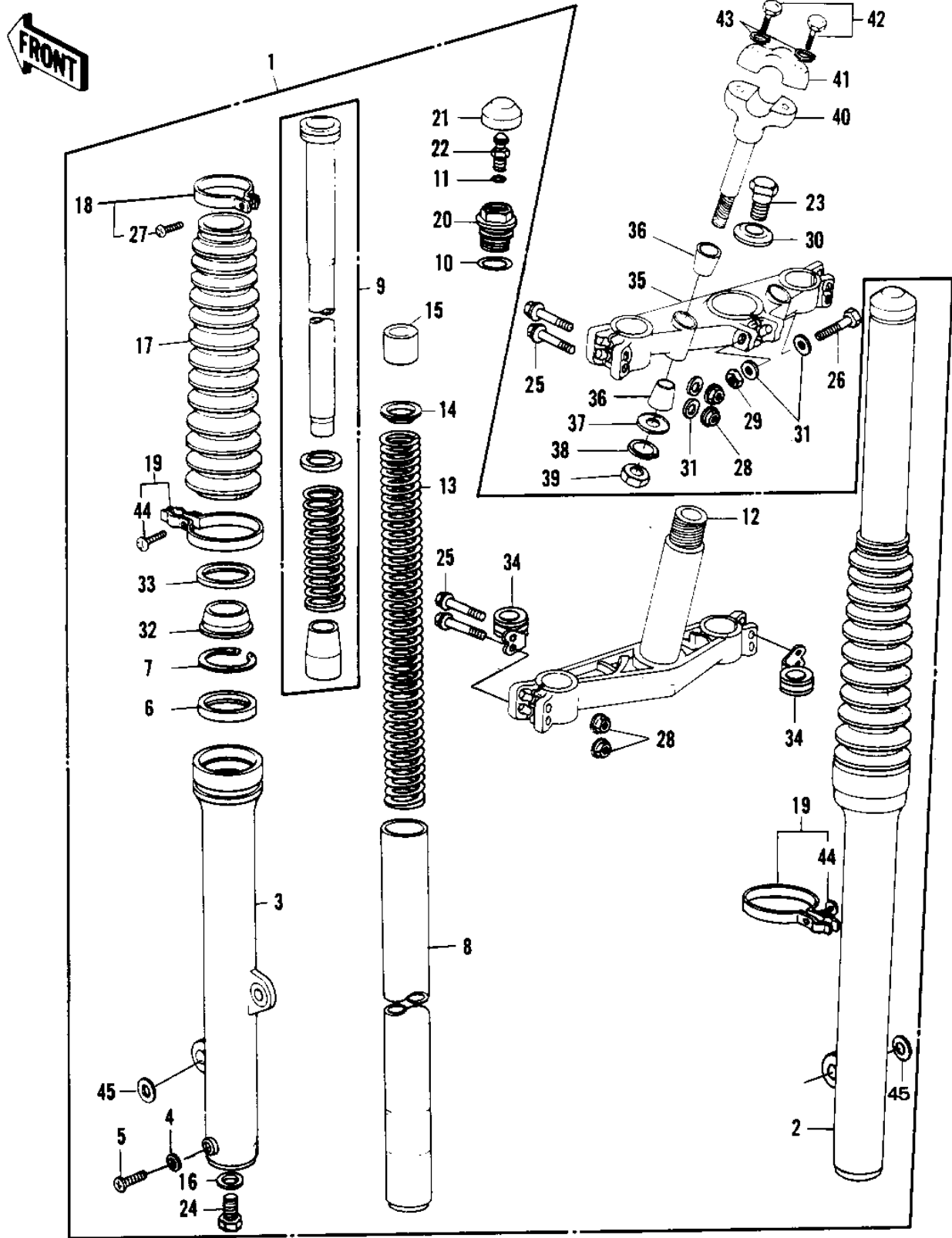


1981 KDX250 PARTS DIAGRAM

FRONT FORK ('81KDX250-B1)



1981 KDX250 PARTS LIST

FRONT FORK ('81KDX250-B1)

ITEM NAME	PART NUMBER	QUANTITY
FORK-FRONT (Ref # 1)	44001-4004	1
TUBE,RH,FORK OUTER (Ref # 2)	44006-4001	1
TUBE,LH,FORK OUTER (Ref # 3)	44005-4001	1
GASKET FORK DRAIN PLG (Ref # 4)	44045-002	2
SCREW PAN HEAD 4X8 (Ref # 5)	220B0408	2
OIL SEAL,FORK OUT TUB (Ref # 6)	92049-1042	2
SNAP RING,FORK OUT TU (Ref # 7)	92033-1035	2
TUBE,FORK INNER (Ref # 8)	44013-4001	2
CYLINDER-FORK (Ref # 9)	44022-4001	2
"0" RING,FORK TOP CAP (Ref # 10)	92055-1050	2
"0" RING,AIR VALVE (Ref # 11)	92055-1018	2
STEM,STEERING (Ref # 12)	44037-1065	1
SPRING,FORK INNER (Ref # 13)	44026-4001	2
GUIDE,FORK SPRING (Ref # 14)	44028-1003	2
SPACER,FORK SPRING (Ref # 15)	92026-4002	2
GASKET,FORK CYLINDER (Ref # 16)	11009-1127	2
BOOT,FORK (Ref # 17)	49006-1174	2
BAND,BOOT (Ref # 18)	92072-1046	2
CLAMP,BOOT,L.H (Ref # 19)	92072-1026	2
CAP,FORK TOP (Ref # 20)	44029-1008	2
CAP,RUBBER,FORK TOP (Ref # 21)	44029-1009	2
VALVE ASSY,AIR (Ref # 22)	16126-1003	2
BOLT,FORK TOP (Ref # 23)	44041-065	1
BOLT,FORK CYLINDER (Ref # 24)	92001-1186	2
BOLT,FLANGED,8X55 (Ref # 25)	130G0855	8
BOLT,HEX HEAD,8X57 (Ref # 26)	92001-1141	1
SCREW-PAN-CROS (Ref # 27)	220B0420	2
NUT,8M/M (Ref # 28)	44007-1002	8
NUT,LOCK,8MM (Ref # 29)	92015-1124	1

1981 KDX250 PARTS LIST

FRONT FORK ('81KDX250-B1)

ITEM NAME	PART NUMBER	QUANTITY
WASHER (Ref # 30)	44043-052	1
WASHER PLAIN 8MM (Ref # 31)	410B0800	6
DUST SHIELD,FORK OUTR (Ref # 32)	92093-1035	2
CASE,DUST SHIELD (Ref # 33)	32099-1013	2
CLAMP,CABLE (Ref # 34)	92072-1027	2
HEAD,STEERING STEM (Ref # 35)	44039-4004	1
DAMPER RUBBER,HANDLE (Ref # 36)	92075-275	4
WASHER (Ref # 37)	92022-4012	2
WASHER SPRING 10MM (Ref # 38)	461F1000	2
NUT,LOCK,10MM (Ref # 39)	92019-021	2
HOLDER-HANDLEBAR LOW (Ref # 40)	46012-010	2
HOLDER-HANDLEBAR (Ref # 41)	46012-008	2
BOLT 8X38 (Ref # 42)	92001-1405	4
WASHER SPRING 8MM (Ref # 43)	461F0800	4
SCREW PAN HEAD 6X20 (Ref # 44)	220B0620	2
WASHER,FORK (Ref # 45)	92022-4006	2