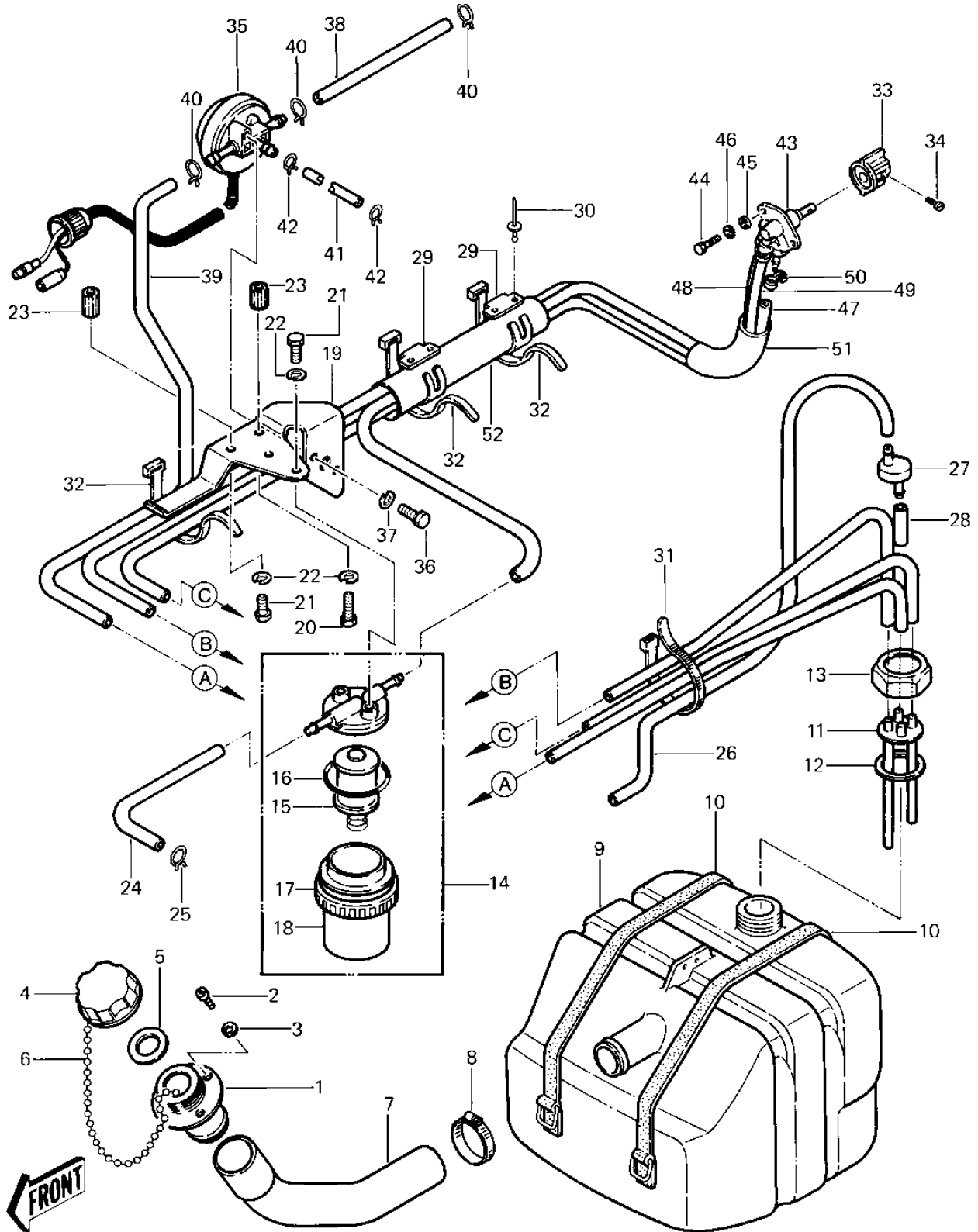


1982 JS550 PARTS DIAGRAM

FUEL TANK (JS550-A1/A2)



1982 JS550 PARTS LIST

FUEL TANK (JS550-A1/A2)

| ITEM NAME | PART NUMBER | QUANTITY |
|----------------------------------|-------------|----------|
| FILLER,FUEL TANK (Ref # 1) | 59231-3001 | 1 |
| SCREW 0.16X0.5 (Ref # 2) | 92011-562 | 4 |
| WASHER (Ref # 3) | 92022-563 | 4 |
| CAP,FUEL TANK (Ref # 4) | 51049-3001 | 1 |
| GASKET,FUEL TANK CAP (Ref # 5) | 11009-3020 | 1 |
| CHAIN,COVER (Ref # 6) | 92057-3704 | 1 |
| HOSE,FUEL INLET,307.5 (Ref # 7) | 92059-3020 | 1 |
| HOSE CLAMP (Ref # 8) | 92037-3009 | 1 |
| TANK-FUEL (Ref # 9) | 51004-3702 | 1 |
| BAND,FUEL TANK (Ref # 10) | 92072-521 | 2 |
| OUTLET,FUEL (Ref # 11) | 31064-3001 | 1 |
| GASKET (Ref # 12) | 92065-504 | 1 |
| RETAINER (Ref # 13) | 23072-501 | 1 |
| FILTER-FUEL (Ref # 14) | 49019-3701 | 1 |
| FILTER,FUEL ELEMENT (Ref # 15) | 14043-3701 | 1 |
| "O" RING,FILTER BASE (Ref # 16) | 92055-3006 | 1 |
| NUT-RING,60MM (Ref # 17) | 92015-3013 | 1 |
| CUP,FUEL FILTER (Ref # 18) | 51036-3701 | 1 |
| BRACKET,FILTER (Ref # 19) | 11034-3013 | 1 |
| BOLT-UPSET,6X16 (Ref # 20) | 112G0616 | 1 |
| BOLT 6X12 (Ref # 21) | 110R0612 | 3 |
| WASHER-SPRING,6MM (Ref # 22) | 461S0600 | 4 |
| NUT, INSERT, 6MM (Ref # 23) | 92015-3014 | 2 |
| TUBE,6X10X200 (Ref # 24) | 92059-3011 | 1 |
| CLAMP,SPARK PLUG CAP (Ref # 25) | 92037-1173 | 1 |
| TUBE,FUEL,6X10X940 (Ref # 26) | 92059-3025 | 1 |
| VALVE,RELIEF (Ref # 27) | 49057-3001 | 1 |
| TUBE,FUEL,5.8X12.2X55 (Ref # 28) | 92059-3026 | 1 |
| CLAMP,TUBE (Ref # 29) | 92037-3005 | 2 |

1982 JS550 PARTS LIST

FUEL TANK (JS550-A1/A2)

| ITEM NAME | PART NUMBER | QUANTITY |
|----------------------------------|-------------|----------|
| RIVET-FUEL LINE CLAMP (Ref # 30) | 59281-505 | 4 |
| BAND,SHORT (Ref # 31) | 92072-030 | 1 |
| BAND,MIDDLE (Ref # 32) | 92072-031 | 2 |
| KNOB,COCK (Ref # 33) | 92077-503 | 1 |
| SCREW-PAN-CROS (Ref # 34) | 220R0408 | 1 |
| VALVE ASSY,SOLENOID (Ref # 35) | 49116-3001 | 1 |
| BOLT 6X14 (Ref # 36) | 110R0614 | 2 |
| WASHER-SPRING,6MM (Ref # 37) | 461S0600 | 2 |
| TUBE,CARB/VALVE (Ref # 38) | 92059-3036 | 1 |
| TUBE,VALVE/TANK (Ref # 39) | 92059-3037 | 1 |
| CLAMP,SPARK PLUG CAP (Ref # 40) | 92037-1173 | 3 |
| TUBE,VALVE/CARB (Ref # 41) | 92059-3038 | 1 |
| CLAMP,7.3MM (Ref # 42) | 92037-3025 | 2 |
| TAP-ASSY,FUEL (Ref # 43) | 51023-3705 | 1 |
| BOLT,5X12 (Ref # 44) | 110R0512A | 2 |
| WASHER (Ref # 45) | 411S0500 | 2 |
| WASHER-SPRING,5MM (Ref # 46) | 461S0500 | 2 |
| TUBE,6X1300 (Ref # 47) | 92059-552 | 1 |
| TUBE,6X1300,RESERVE (Ref # 48) | 92059-553 | 1 |
| TUBE,6X10X960 (Ref # 49) | 92059-3007 | 1 |
| CLAMP (Ref # 50) | 92037-551 | 3 |
| TUBE,GUARD (Ref # 51) | 92059-3008 | 1 |
| TUBE,VINYL,22X350 (Ref # 52) | 92059-3018 | 1 |