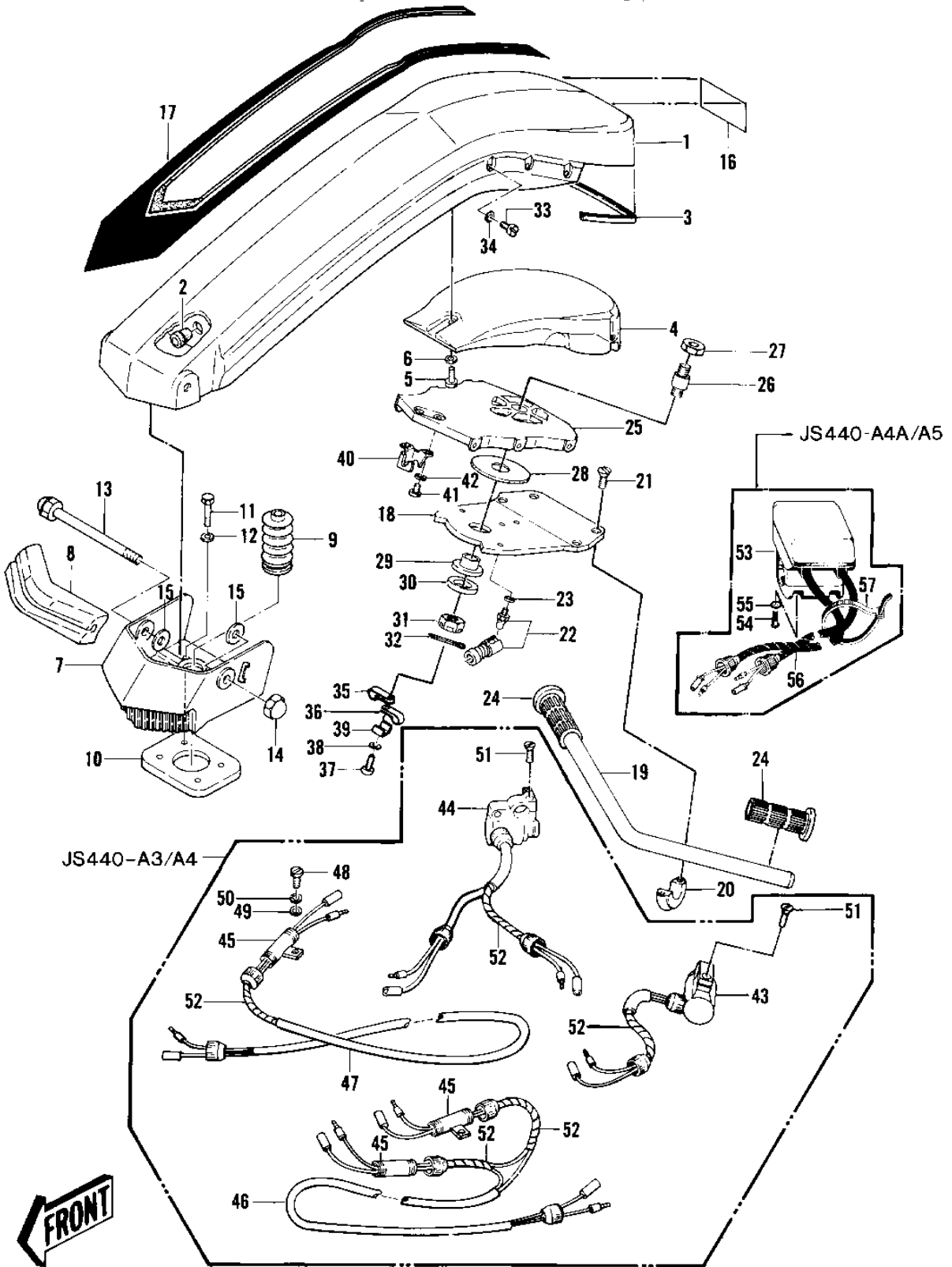


1981 JS440 PARTS DIAGRAM

HANDLE POLE/SWITCHES ('79-'81 A3/A4/A4A/



1981 JS440 PARTS LIST

HANDLE POLE/SWITCHES ('79-'81 A3/A4/A4A/

ITEM NAME	PART NUMBER	QUANTITY
POLE-HANDLE-PLAIN (Ref # 1)	59166-3002-8C	1
GROMMET (Ref # 2)	92071-530	1
GROMMET (Ref # 3)	92071-534	1
FLOAT ASSY, HANDLE (Ref # 4)	16031-506	1
SCREW 0.16X0.5 (Ref # 5)	92011-562	1
WASHER (Ref # 6)	92022-563	1
BRACKET-HANDLE-POLE,S (Ref # 7)	39021-3701-F2	2
DAMPER (Ref # 8)	92075-519	1
COVER-STEERING CABLE (Ref # 9)	59176-514	1
PLATE-POLE BRACKET (Ref # 10)	59086-538	1
BOLT,8X30 (Ref # 11)	92150-3721	1
WASHER (Ref # 12)	411S0800	1
BOLT,14X183 (Ref # 13)	92001-3018	1
NUT 14M/M (Ref # 14)	92015-507	1
WASHER (Ref # 15)	92022-507	1
WASHER,O36XO15X4.5T (Ref # 15)	92022-3024	1
LABEL-SFTY-HNDL POLE (Ref # 16)	56022-507	1
DECAL, HANDLE POLE (Ref # 17)	56030-3011	1
PLATE,HANDLEBAR (Ref # 18)	13169-3004	1
HANDLEBAR (Ref # 19)	32032-3017	1
CLAMP,HANDLE PIPE (Ref # 20)	92037-503	1
SCREW,CNTSNK HEAD8X22 (Ref # 21)	92009-3004	1
JOINT-BALL (Ref # 22)	59266-3707	1
WASHER-SPRING,6MM (Ref # 23)	461S0600	3
GRIP,HANDLE,RH (Ref # 24)	46075-3704	1
BRACKET,SUPPORT (Ref # 25)	11046-3847	1
STUD (Ref # 26)	92004-3006	1
NUT,16M/M (Ref # 27)	92015-536	1
BUSHING (Ref # 28)	92028-512	1

1981 JS440 PARTS LIST

HANDLE POLE/SWITCHES ('79-'81 A3/A4/A4A/

ITEM NAME	PART NUMBER	QUANTITY
BUSHING (Ref # 29)	92028-513	1
WASHER (Ref # 30)	92022-571	1
NUT,CASTLE,18M/M (Ref # 31)	92015-3006	1
PIN-COTTER,4X40 (Ref # 32)	550S4040	1
BOLT 6X16 (Ref # 33)	110R0616	1
WASHER (Ref # 34)	411S0600	2
CLAMP,LEAD WIRE (Ref # 35)	92037-3007	1
CLAMP,LEAD WIRE (Ref # 36)	92037-3008	1
SCREW-PAN-CROS (Ref # 36)	220R0516	1
WASHER-SPRING,5MM (Ref # 38)	461S0500	1
WASHER,CLAMP (Ref # 39)	92022-3014	1
HOLDER,CABLE (Ref # 40)	14044-3001	1
BOLT 6X12 (Ref # 41)	110R0612	1
SWITCH,START (Ref # 43)	27010-3001	1
SWITCH,STOP (Ref # 44)	27010-3002	1
CASE,CONNECTOR (Ref # 45)	32099-3002	1
HARNESS,START (Ref # 46)	26001-3003	1
HARNESS,STOP (Ref # 47)	26001-3004	1
SCREW,6X20 (Ref # 48)	220R0620	1
SCREW,OVL CNTSNK,6X22 (Ref # 51)	222R0622	1
TUBE,SPIRAL (Ref # 52)	92059-3010	1