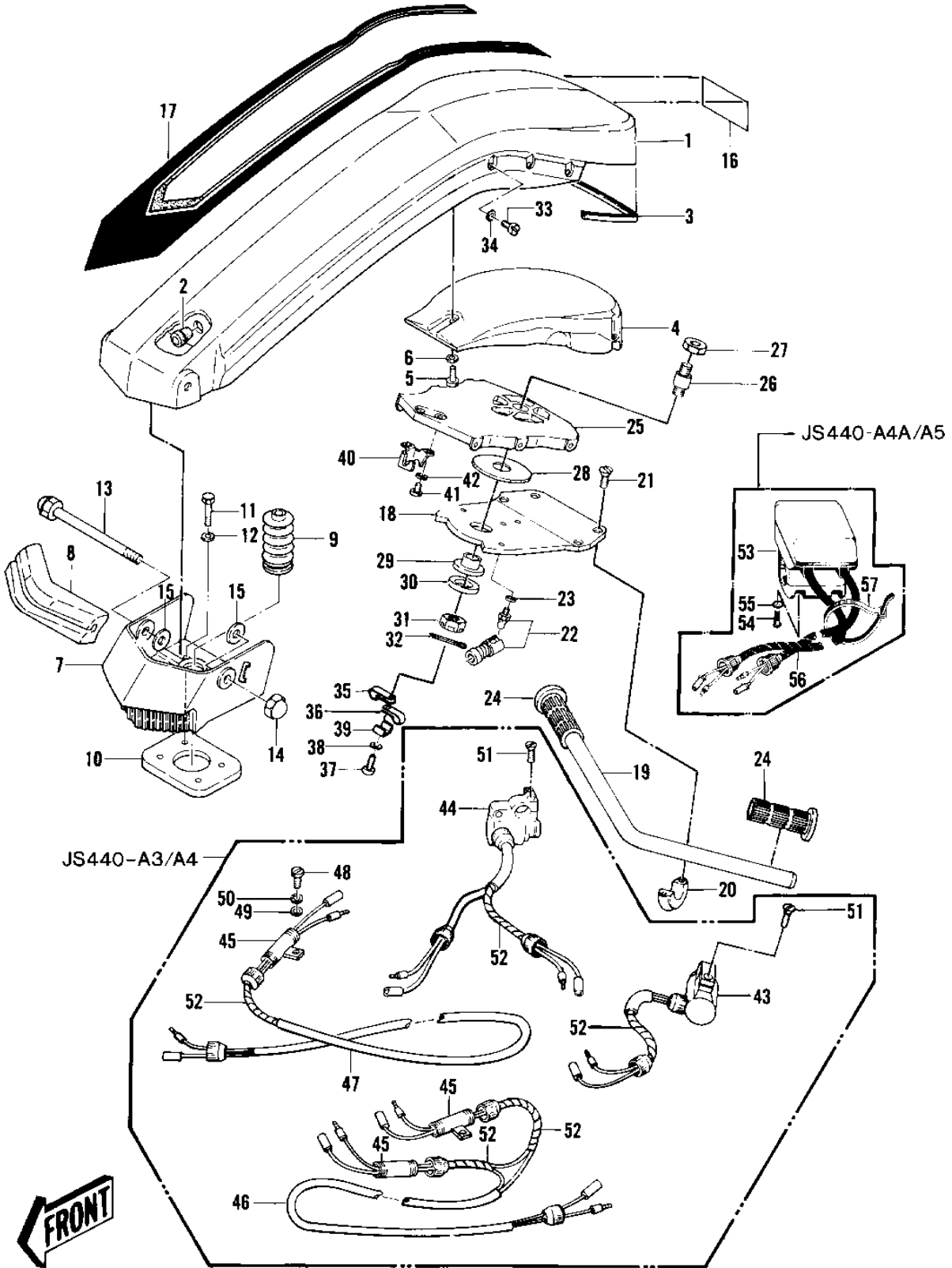


# 1979 JS440 PARTS DIAGRAM

HANDLE POLE/SWITCHES ('79-'81 A3/A4/A4A/



# 1979 JS440 PARTS LIST

HANDLE POLE/SWITCHES ('79-'81 A3/A4/A4A/

| ITEM NAME                        | PART NUMBER   | QUANTITY |
|----------------------------------|---------------|----------|
| POLE-HANDLE-PLAIN (Ref # 1)      | 59166-3002-8C | 1        |
| GROMMET (Ref # 2)                | 92071-530     | 1        |
| GROMMET (Ref # 3)                | 92071-534     | 1        |
| FLOAT ASSY, HANDLE (Ref # 4)     | 16031-506     | 1        |
| SCREW 0.16X0.5 (Ref # 5)         | 92011-562     | 3        |
| WASHER (Ref # 6)                 | 92022-563     | 3        |
| BRACKET-HANDLE-POLE,S (Ref # 7)  | 39021-3701-F2 | 1        |
| DAMPER (Ref # 8)                 | 92075-519     | 1        |
| COVER-STEERING CABLE (Ref # 9)   | 59176-514     | 1        |
| PLATE-POLE BRACKET (Ref # 10)    | 59086-538     | 1        |
| BOLT,8X30 (Ref # 11)             | 92150-3721    | 4        |
| WASHER (Ref # 12)                | 411S0800      | 4        |
| BOLT,14X183 (Ref # 13)           | 92001-3018    | 1        |
| NUT 14M/M (Ref # 14)             | 92015-507     | 1        |
| WASHER,036X015X4.5T (Ref # 15)   | 92022-3024    | 2        |
| LABEL-SFTY-HNDL POLE (Ref # 16)  | 56022-507     | 1        |
| DECAL, HANDLE POLE (Ref # 17)    | 56030-3011    | 1        |
| PLATE,HANDLEBAR (Ref # 18)       | 13169-3004    | 1        |
| HANDLEBAR (Ref # 19)             | 32032-3017    | 1        |
| CLAMP,HANDLE PIPE (Ref # 20)     | 92037-503     | 2        |
| SCREW,CNTSNK HEAD8X22 (Ref # 21) | 92009-3004    | 4        |
| JOINT-BALL (Ref # 22)            | 59266-3707    | 1        |
| WASHER-SPRING,6MM (Ref # 23)     | 461S0600      | 1        |
| GRIP,HANDLE,RH (Ref # 24)        | 46075-3704    | 2        |
| BRACKET,SUPPORT (Ref # 25)       | 11046-3847    | 1        |
| STUD (Ref # 26)                  | 92004-3006    | 1        |
| NUT,16M/M (Ref # 27)             | 92015-536     | 1        |
| BUSHING (Ref # 28)               | 92028-512     | 1        |
| BUSHING (Ref # 29)               | 92028-513     | 1        |

## 1979 JS440 PARTS LIST

HANDLE POLE/SWITCHES ('79-'81 A3/A4/A4A/

| ITEM NAME                      | PART NUMBER | QUANTITY |
|--------------------------------|-------------|----------|
| WASHER (Ref # 30)              | 92022-571   | 1        |
| NUT,CASTLE,18M/M (Ref # 31)    | 92015-3006  | 1        |
| PIN-COTTER,4X40 (Ref # 32)     | 550S4040    | 1        |
| BOLT 6X16 (Ref # 33)           | 110R0616    | 6        |
| WASHER (Ref # 34)              | 411S0600    | 6        |
| CLAMP,LEAD WIRE (Ref # 35)     | 92037-3007  | 1        |
| CLAMP,LEAD WIRE (Ref # 36)     | 92037-3007  | 1        |
| SCREW-PAN-CROS (Ref # 36)      | 220R0516    | 1        |
| WASHER-SPRING,5MM (Ref # 38)   | 461S0500    | 1        |
| WASHER,CLAMP (Ref # 39)        | 92022-3014  | 1        |
| HOLDER,CABLE (Ref # 40)        | 14044-3001  | 1        |
| BOLT 6X12 (Ref # 41)           | 110R0612    | 2        |
| WASHER-SPRING,6MM (Ref # 42)   | 461S0600    | 2        |
| SWITCH ASSY (Ref # 53)         | 27004-3002  | 1        |
| SCREW,PAN HEAD,5X20 (Ref # 54) | 220R0520A   | 4        |
| WASHER,PLAIN,5MM (Ref # 55)    | 410S0500    | 4        |
| TUBE,SPIRAL (Ref # 56)         | 92059-3010  | 2        |
| BAND,MIDDLE (Ref # 57)         | 92072-031   | 1        |