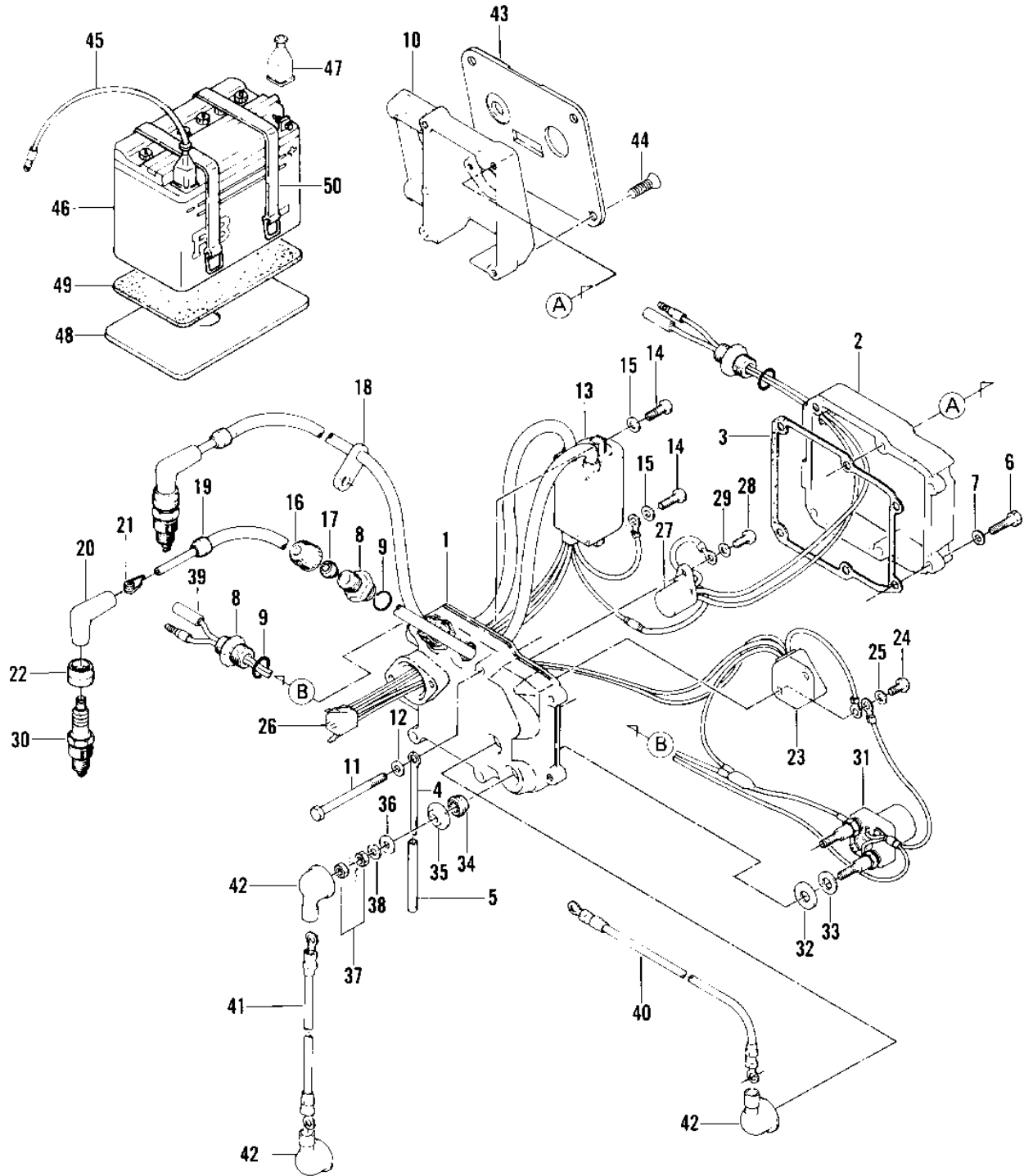


## 1981 JS440 PARTS DIAGRAM

ELECTRIC CASE (JS440-A5)



## 1981 JS440 PARTS LIST

ELECTRIC CASE (JS440-A5)

| ITEM NAME                        | PART NUMBER   | QUANTITY |
|----------------------------------|---------------|----------|
| CASE-ELECTRIC,FRONT (Ref # 1)    | 59416-3004-YR | 1        |
| CASE-ELECTRIC,REAR (Ref # 2)     | 59416-3003-YR | 1        |
| GASKET,ELECTRIC CASE (Ref # 3)   | 11009-3781    | 1        |
| CLAMP,L=100 (Ref # 4)            | 92037-3736    | 1        |
| TUBE,VINYL,5X73 (Ref # 5)        | 92059-3017    | 1        |
| BOLT,HEX HEAD,6X25 (Ref # 6)     | 110R0625      | 1        |
| WASHER (Ref # 7)                 | 411S0600      | 3        |
| JOINT (Ref # 8)                  | 59071-3001    | 1        |
| "O" RING,16MM (Ref # 9)          | 670B2016      | 1        |
| CASE,FUEL TAP (Ref # 10)         | 32099-3752    | 1        |
| BOLT,6X80 (Ref # 11)             | 110R0680      | 1        |
| IGNITER (Ref # 13)               | 21119-3016    | 1        |
| SCREW PAN HEAD 6X20 (Ref # 14)   | 220B0620      | 1        |
| WASHER PLAIN 6MM (Ref # 15)      | 410B0600      | 3        |
| CAP (Ref # 16)                   | 11012-3005    | 1        |
| GROMMET (Ref # 17)               | 92071-527     | 1        |
| GROMMET (Ref # 18)               | 92071-529     | 1        |
| GROMMET (Ref # 19)               | 92071-517     | 1        |
| CAP SPARK PLUG (Ref # 20)        | 21130-009     | 1        |
| SPRING-SPARK PLUG CAP (Ref # 21) | 92101-001     | 1        |
| COVER,PLUG (Ref # 22)            | 92071-501     | 1        |
| REGULATOR VOLTAGE (Ref # 23)     | 21066-3004    | 1        |
| SCREW PAN HEAD 6X12 (Ref # 24)   | 220B0612      | 1        |
| CONNECTOR,CORD (Ref # 26)        | 59221-505     | 1        |
| RELAY (Ref # 27)                 | 27034-3002    | 1        |
| SCREW PAN HEAD 6X16 (Ref # 28)   | 220B0616      | 1        |
| SPARK PLUG B7ES (Ref # 30)       | 92070-3003    | 1        |
| SWITCH,SOLENOID (Ref # 31)       | 27010-3007    | 1        |
| WASHER,10.5X24X2.5 (Ref # 32)    | 92022-3035    | 1        |

## 1981 JS440 PARTS LIST

ELECTRIC CASE (JS440-A5)

| ITEM NAME                        | PART NUMBER | QUANTITY |
|----------------------------------|-------------|----------|
| WASHER PLAIN 10MM (Ref # 33)     | 410B1000    | 1        |
| GROMMET (Ref # 34)               | 92071-3004  | 1        |
| WASHER (Ref # 35)                | 92022-3036  | 1        |
| WASHER (Ref # 36)                | 92022-553   | 1        |
| NUT,6M/M (Ref # 37)              | 311R0600    | 1        |
| WIRE-LEAD,L=230 (Ref # 39)       | 26011-3003  | 1        |
| WIRE-LEAD,BATTERY(+) (Ref # 40)  | 26011-3778  | 1        |
| WIRE-LEAD,L=340 (Ref # 41)       | 26011-3005  | 1        |
| CAP (Ref # 42)                   | 11012-3004  | 1        |
| PANEL-CONTROL (Ref # 43)         | 59226-3702  | 1        |
| SCREW,CNTSNK HEAD8X22 (Ref # 44) | 92009-3004  | 1        |
| WIRE-LEAD,BATTERY(-) (Ref # 45)  | 26011-3776  | 1        |
| FB BAT 12N16-3B (Ref # 46)       | 26012-1013  | 1        |
| CAP-BATTERY TERMINAL (Ref # 47)  | 59176-501   | 1        |
| PLATE-BATTERY (Ref # 48)         | 13169-3014  | 1        |
| CUSHION,BATTERY (Ref # 49)       | 92075-509   | 1        |
| BAND,BATTERY (Ref # 50)          | 92072-512   | 1        |