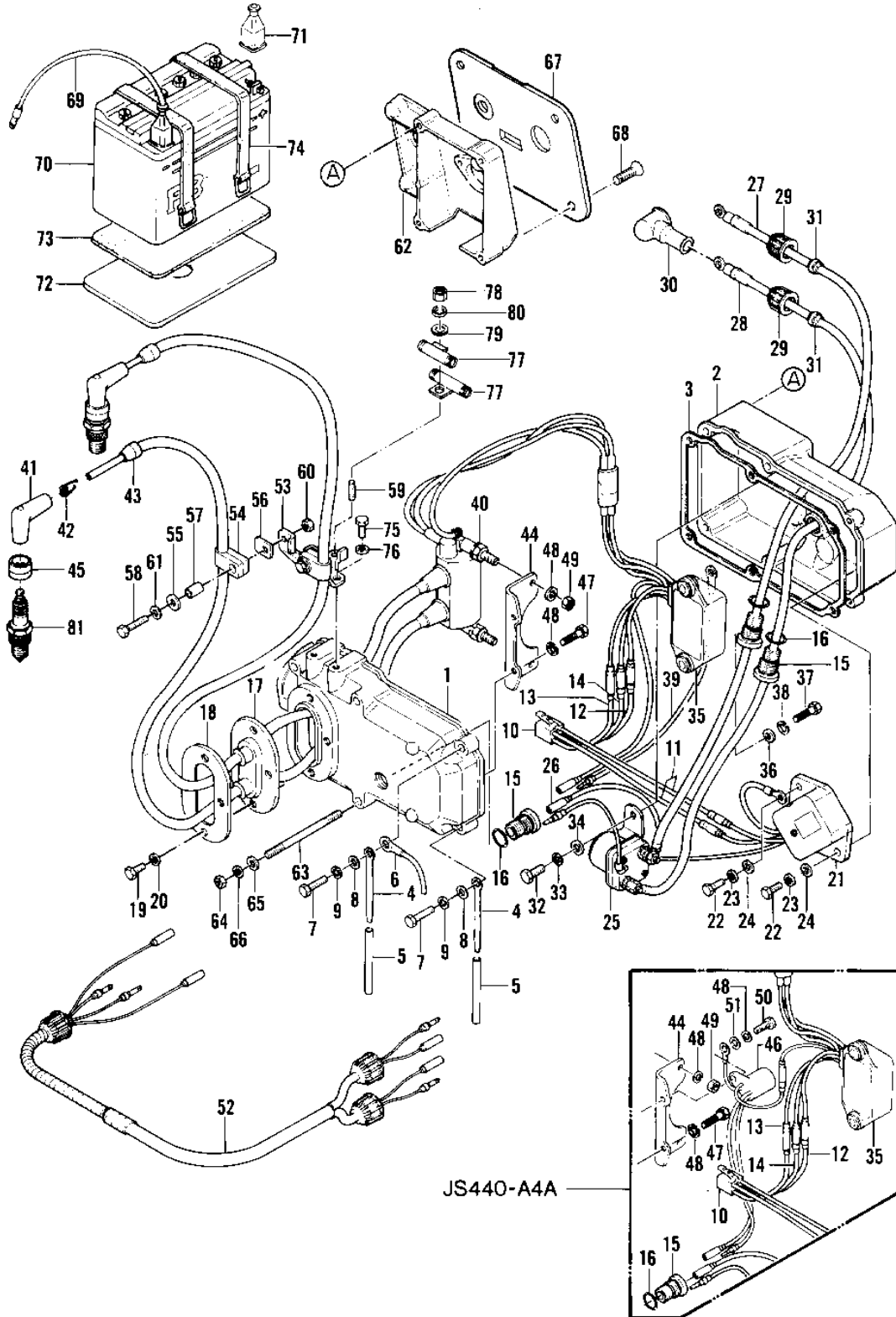


# 1979 JS440 PARTS DIAGRAM

ELECTRIC CASE (JS440-A3/A4/A4A)

F



# 1979 JS440 PARTS LIST

ELECTRIC CASE (JS440-A3/A4/A4A)

ITEM NAME	PART NUMBER	QUANTITY
CASE,ELECTRIC (Ref # 1)	59416-3001	1
CASE,ELECTRIC (2) (Ref # 2)	59021-532	1
GASKET,CASE (Ref # 3)	11009-3024	1
CLAMP,L=100 (Ref # 4)	92037-3736	2
TUBE,VINYL,5X73 (Ref # 5)	92059-3017	2
WIRE,EARTH (Ref # 6)	26011-505	1
BOLT,HEX HEAD,6X25 (Ref # 7)	110R0625	2
WASHER (Ref # 8)	411S0600	2
WASHER-SPRING,6MM (Ref # 9)	461S0600	2
CONNECTOR,CORD (Ref # 10)	59221-505	1
WIRE,LEAD (Ref # 11)	26011-512	2
WIRE,LEAD (Ref # 12)	26011-513	1
WIRE,LEAD (Ref # 13)	26011-514	1
WIRE,LEAD (Ref # 14)	26011-515	1
JOINT-STATOR WIRE (Ref # 15)	59071-516	3
"0" RING,16MM (Ref # 16)	670B2016	3
GROMMET (Ref # 17)	92071-526	1
PLATE-ELECTRICAL CASE (Ref # 18)	59086-516	1
BOLT 6X14 (Ref # 19)	110R0614	4
WASHER-SPRING,6MM (Ref # 20)	461S0600	4
REGULATOR (Ref # 21)	21066-501	1
BOLT-UPSET 6X14 (Ref # 22)	112B0614	2
WASHER SPRING 6MM (Ref # 23)	461F0600	2
WASHER PLAIN 6MM (Ref # 24)	411B0600	2
SWITCH,MAGNETIC (Ref # 25)	21164-515	1
WIRE,LEAD (Ref # 26)	26011-516	1
WIRE,LEAD,BATTERY (Ref # 27)	26011-3002	1
WIRE,LEAD,STARTER (Ref # 28)	26011-519	1
CAP (Ref # 29)	11012-3012	2

# 1979 JS440 PARTS LIST

ELECTRIC CASE (JS440-A3/A4/A4A)

ITEM NAME	PART NUMBER	QUANTITY
CAP,STARTER (Ref # 30)	59176-506	1
GROMMET (Ref # 31)	92071-527	2
BOLT SMALL (Ref # 32)	114G0812	2
WASHER SPRING 5MM (Ref # 33)	461F0500	2
WASHER PLAIN 5MM (Ref # 34)	411B0500	2
IGNITER (Ref # 35)	21119-3004	1
WASHER,IGNITER (Ref # 36)	92022-3013	2
BOLT 6X22 (Ref # 37)	112B0622	2
WASHER SPRING 6MM (Ref # 38)	461F0600	2
COIL,IGNITION (Ref # 40)	21121-518	1
CAP SPARK PLUG (Ref # 41)	21130-009	2
SPRING-SPARK PLUG CAP (Ref # 42)	92101-001	2
GROMMET (Ref # 43)	92071-517	2
BRACKET,COIL (Ref # 44)	59016-521	1
COVER,PLUG (Ref # 45)	92071-501	2
RELAY, (Ref # 46)	27034-3001	1
BOLT-UPSET 6X14 (Ref # 47)	112B0614	1
WASHER SPRING 6MM (Ref # 48)	461F0600	4
NUT 6MM (Ref # 49)	311B0600	2
BOLT-UPSET,6X20 (Ref # 50)	112G0620	1
WASHER PLAIN 6MM (Ref # 51)	411B0600	1
HARNESS,SWITCH (Ref # 52)	26001-3005	1
BRACKET,CLAMP (Ref # 53)	11034-3005	1
CLAMP (Ref # 54)	92037-523	2
WASHER (Ref # 55)	92022-553	2
WASHER (Ref # 56)	92022-553	2
COLLAR (Ref # 57)	92027-519	2
BOLT,6X30 (Ref # 58)	92001-3022	2
STUD,6X20 (Ref # 59)	171R0620	1

# 1979 JS440 PARTS LIST

ELECTRIC CASE (JS440-A3/A4/A4A)

ITEM NAME	PART NUMBER	QUANTITY
NUT,6M/M (Ref # 60)	311R0600	2
WASHER (Ref # 61)	411S0600	2
CASE,FUEL TAP (Ref # 62)	32099-3752	1
STUD,6X98 (Ref # 63)	92004-3007	4
NUT,6M/M (Ref # 64)	311R0600	4
WASHER (Ref # 65)	411S0600	4
WASHER-SPRING,6MM (Ref # 66)	461S0600	4
PANEL-CONTROL (Ref # 67)	59226-3702	1
SCREW,CNTSNK HEAD8X22 (Ref # 68)	92009-3004	4
WIRE-LEAD,BATTERY(-) (Ref # 69)	26011-3776	1
FB BAT 12N16-3B (Ref # 70)	26012-1013	1
CAP-BATTERY TERMINAL (Ref # 71)	59176-501	2
PLATE-BATTERY (Ref # 72)	59086-520	1
CUSHION,BATTERY (Ref # 73)	92075-509	1
BAND,BATTERY (Ref # 74)	92072-512	2
BOLT 6X14 (Ref # 75)	110R0614	2
WASHER-SPRING,6MM (Ref # 76)	461S0600	2
CASE,CONNECTOR (Ref # 77)	32099-3002	2
NUT,6M/M (Ref # 78)	311R0600	1
WASHER (Ref # 79)	411S0600	1
WASHER-SPRING,6MM (Ref # 80)	461S0600	1
SPARK PLUG B7ES (Ref # 81)	92070-3003	2