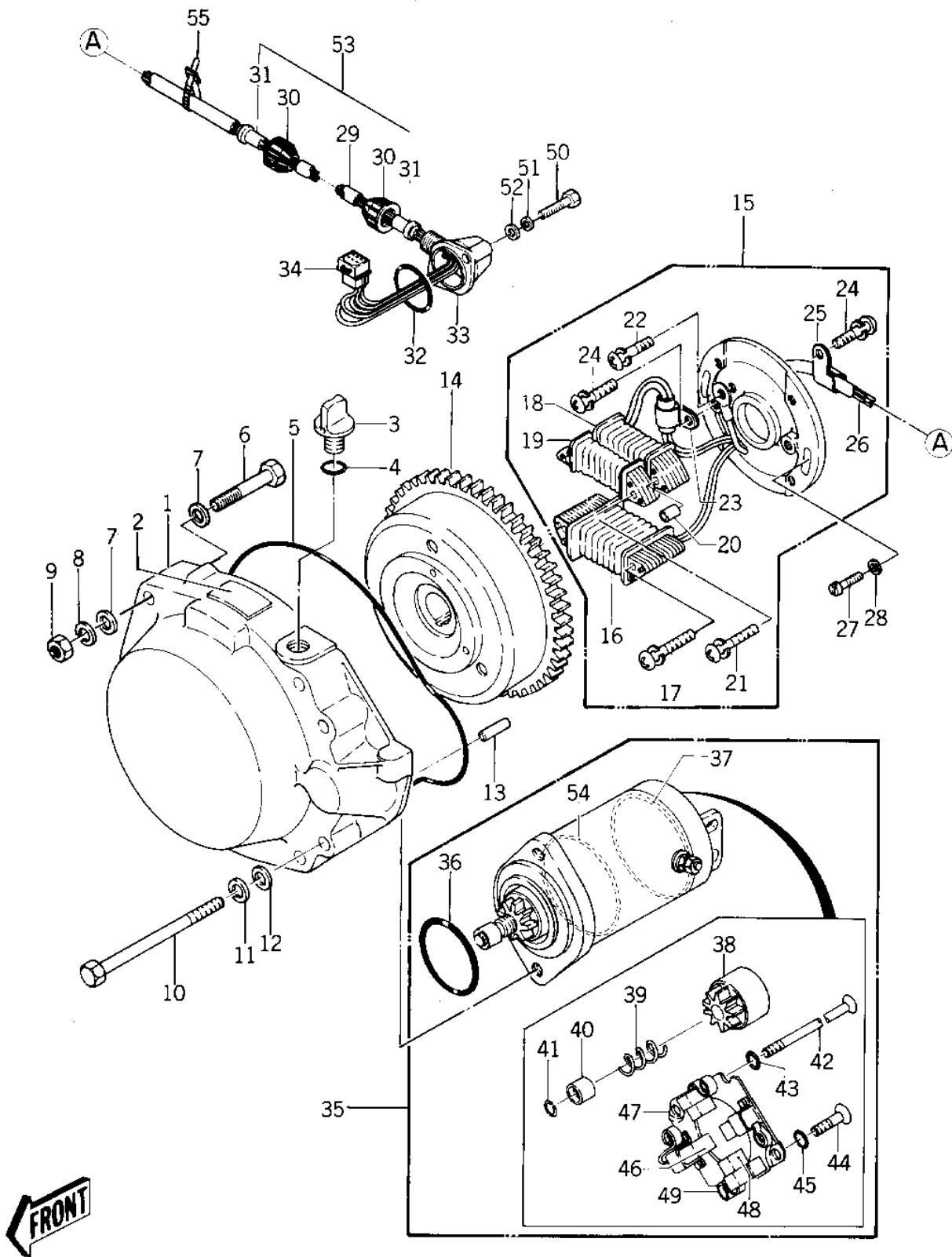


1978 JS440 PARTS DIAGRAM

GENERATOR/STARTER MOTOR ('77-'78 A1/A1A/)



1978 JS440 PARTS LIST

GENERATOR/STARTER MOTOR ('77-'78 A1/A1A/

| ITEM NAME | PART NUMBER | QUANTITY |
|------------------------------|-------------|----------|
| COVER-GENERATOR (Ref # 1) | 14031-3705 | |
| LABEL,HORSE POWER (Ref # 2) | 56019-561 | |
| BREATHER (Ref # 3) | 14069-3709 | |
| "O" RING (Ref # 4) | 92055-515 | |
| "O" RING (Ref # 5) | 92055-521 | |
| BOLT 8X50 (Ref # 6) | 110R0850 | |
| WASHER (Ref # 7) | 410S0800 | |
| WASHER SPRING 8MM (Ref # 8) | 461S0800 | |
| NUT 8MM (Ref # 9) | 311R0800 | |
| BOLT,8X80 (Ref # 10) | 92001-3011 | |
| BOLT,8X80 (Ref # 10) | 92001-3011 | |
| WASHER SPRING 8MM (Ref # 11) | 461S0800 | |
| WASHER (Ref # 12) | 410S0800 | |
| PIN,DOWEL (Ref # 13) | 551R0612 | |
| FLYWHEEL ASSY (Ref # 14) | 21050-3005 | |
| FLYWHEEL ASSY (Ref # 14) | 21050-3005 | |
| STATOR ASSY (Ref # 15) | 21003-524 | |
| COIL,CHARGE (Ref # 16) | 59031-501 | |
| SCREW 5X34 (Ref # 17) | 92011-530 | |
| COIL,EXCITING (Ref # 18) | 21049-506 | |
| COIL,PULSING (Ref # 19) | 59026-504 | |
| COLLAR,COIL (Ref # 20) | 92027-509 | |
| SCREW 5X40 (Ref # 21) | 92011-533 | |
| SCREW 4X6 (Ref # 22) | 92011-559 | |
| CLAMP (Ref # 23) | 92037-520 | |
| SCREW 4X8 (Ref # 24) | 92011-560 | |
| CLAMP (Ref # 25) | 92037-547 | |
| HARNESS,MAGNETO (Ref # 26) | 26001-3006 | |
| SCREW 5X20 (Ref # 27) | 232B0520A | |

1978 JS440 PARTS LIST

GENERATOR/STARTER MOTOR ('77-'78 A1/A1A/

| ITEM NAME | PART NUMBER | QUANTITY |
|--------------------------------|--------------|----------|
| WASHER (Ref # 28) | 92022-544 | |
| CAP-ASSY (Ref # 29) | 14075-3001 | |
| TUBE,10X335 (Ref # 29) | 92059-3019 | |
| CAP-ASSY (Ref # 30) | 14075-3001 | |
| CAP (Ref # 30) | 11012-3012 | |
| CAP-ASSY (Ref # 31) | 14075-3001 | |
| GROMMET (Ref # 31) | 92071-3001 | |
| "O" RING (Ref # 32) | 92055-520 | |
| CAP-MAGNETO HARNESS (Ref # 33) | 59176-517-YR | |
| CONNECTOR,CORD (Ref # 34) | 59221-506 | |
| STARTER-ELECTRIC (Ref # 35) | 21163-3710 | |
| STARTER-ELECTRIC (Ref # 35) | 21163-3710 | |
| STARTER-ELECTRIC (Ref # 35) | 21163-3710 | |
| "O" RING,65MM (Ref # 36) | 671B2565 | |
| "O" RING(4) (Ref # 37) | 92055-517 | |
| PINION ASSY (Ref # 38) | 59051-505 | |
| PINION ASSY-STARTER (Ref # 38) | 59051-3005 | |
| PINION ASSY-STARTER (Ref # 38) | 59051-3005 | |
| SPRING,RETURN (Ref # 39) | 92081-541 | |
| STOPPER,PINION (Ref # 40) | 92027-513 | |
| RING,SNAP (Ref # 41) | 92036-517 | |
| SCREW 6X107 (Ref # 42) | 92011-549 | |
| "O" RING,6M/M (Ref # 43) | 670B1506 | |
| SCREW 4X8 (Ref # 44) | 92011-550 | |
| 'O'RING(1) (Ref # 45) | 92055-519 | |
| "O" RING,5MM (Ref # 45) | 670B1505 | |
| BRUSH(+) (Ref # 46) | 21039-3003 | |
| BRUSH(+) (Ref # 46) | 21039-3003 | |
| HOLDER ASSY,BRUSH (Ref # 47) | 14079-3002 | |