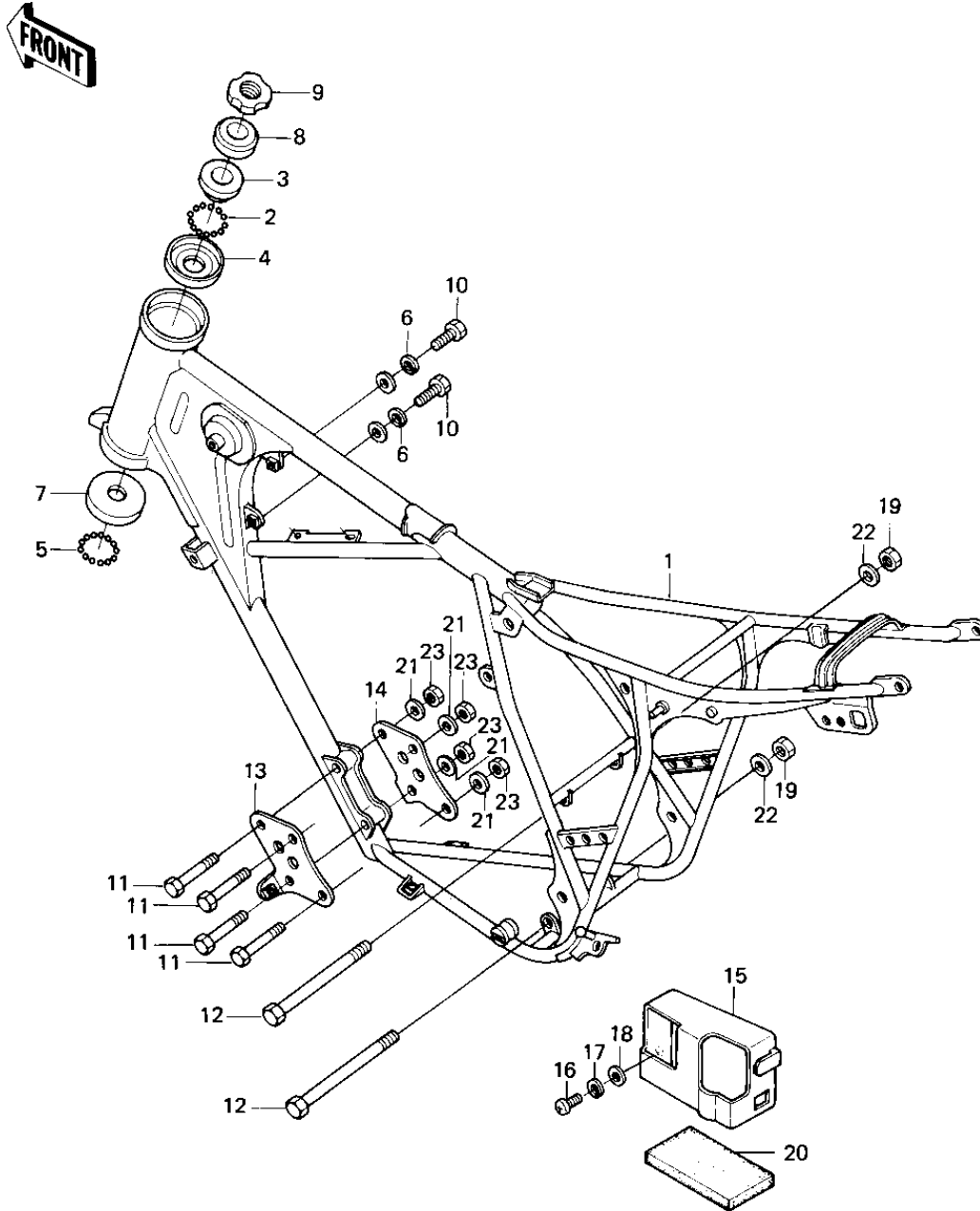


# 1980 KE175 PARTS DIAGRAM

## FRAME/FRAME FITTINGS



# 1980 KE175 PARTS LIST

## FRAME/FRAME FITTINGS

ITEM NAME	PART NUMBER	QUANTITY
FRAME (Ref # 1)	32002-1142	1
BALL STEEL 3/16' (Ref # 2)	600A0600	23
CONE,STRG STM BRG,UP (Ref # 3)	92047-014	1
RACE,STRG STM BEARING (Ref # 4)	92048-009	1
BALL STEEL 1/4' (Ref # 5)	600A0800	19
COLLAR,REAR FENDER (Ref # 6)	92027-1181	2
RACE STEERING BEARING (Ref # 7)	92048-005	1
CAP,STEERING STEM (Ref # 8)	46098-018	1
NUT,STEERING STEM (Ref # 9)	92090-022	1
BOLT-UPSET,6X40 (Ref # 10)	112G0640	2
BOLT-FLANGE (Ref # 11)	92001-1582	4
BOLT,HEX HEAD,10X120 (Ref # 12)	92001-1247	2
PLATE,ENGINE MOUNT,LH (Ref # 13)	13169-1156	1
PLATE,ENGINE MOUNT,RH (Ref # 14)	13169-1157	1
COVER,BATTERY (Ref # 15)	14025-1048	1
SCREW PAN HEAD 6X12 (Ref # 16)	220B0612	1
WASHER SPRING 6MM (Ref # 17)	461F0600	1
WASHER PLAIN 6MM (Ref # 18)	411B0600	1
NUT,LOCK,10MM (Ref # 19)	92019-021	2
MAT,BATTERY (Ref # 20)	32103-027	1
WASHER PLAIN 8MM (Ref # 21)	411B0800	4
WASHER PLAIN 10MM (Ref # 22)	411B1000	2
NUT,LOCK,8MM (Ref # 23)	92015-1124	4