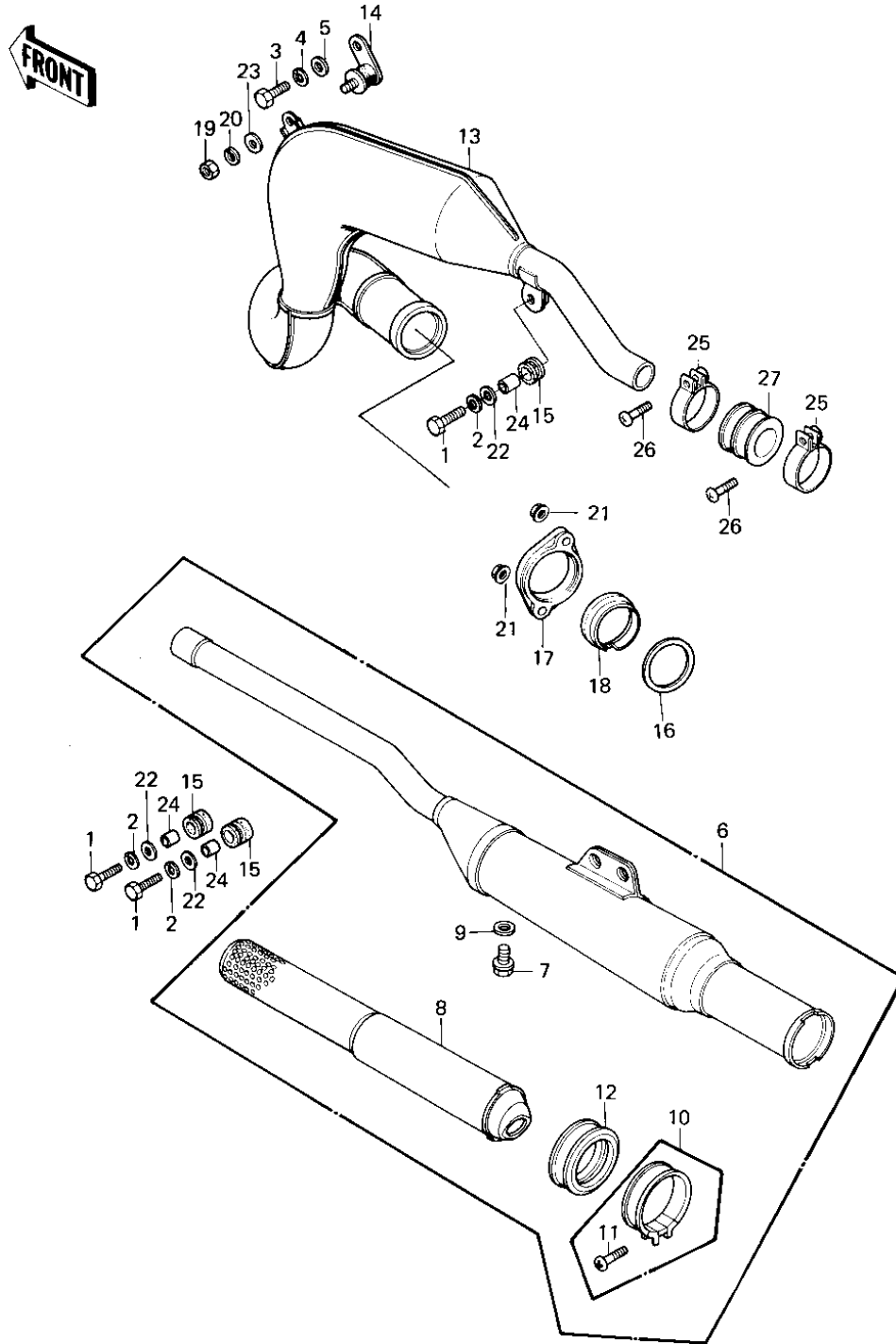


1981 KE175 PARTS DIAGRAM

MUFFLER ('80-'81 KE175-D2/D3)



1981 KE175 PARTS LIST

MUFFLER ('80-'81 KE175-D2/D3)

| ITEM NAME | PART NUMBER | QUANTITY |
|----------------------------------|-------------|----------|
| BOLT HEX HEAD 8X28 (Ref # 1) | 114G0828 | 1 |
| WASHER SPRING 8MM (Ref # 2) | 461F0800 | 3 |
| BOLT-SMALL-UPSET,8X16 (Ref # 3) | 115G0816 | 1 |
| WASHER PLAIN 8MM (Ref # 5) | 410B0800 | 1 |
| MUFFLER ASSY (Ref # 6) | 18001-1153 | 1 |
| BOLT HEX HEAD 6X8 (Ref # 7) | 110B0608 | 1 |
| BAFFLE PIPE,MUFFLER (Ref # 8) | 49099-1006 | 1 |
| WASHER OIL PUMP BANJO (Ref # 9) | 92022-077 | 1 |
| CLAMP (Ref # 10) | 92037-171 | 1 |
| SCREW-PAN-CROS (Ref # 11) | 220B0535 | 1 |
| DUST SHIELD,MUFFLER (Ref # 12) | 92093-1013 | 1 |
| BODY,MUFFLER (Ref # 13) | 18006-1050 | 1 |
| BRACKET,MUFFLER (Ref # 14) | 18061-060 | 1 |
| DAMPER RUBBER-MUFFLER (Ref # 15) | 18063-005 | 1 |
| GASKET EXHAUST PIPE (Ref # 16) | 18067-008 | 1 |
| HOLDER,EXHAUST (Ref # 17) | 18069-049 | 1 |
| INSERT,EXHAUST HOLDER (Ref # 18) | 18070-007 | 1 |
| NUT,8M/M (Ref # 19) | 317B0800 | 1 |
| NUT,8M/M (Ref # 21) | 92015-1014 | 1 |
| WASHER,8X26X2.3 (Ref # 22) | 92022-1564 | 1 |
| WASHER,8.5X20X1.6 (Ref # 23) | 92022-1561 | 1 |
| COLLAR (Ref # 24) | 92027-102 | 1 |
| CLAMP,CARBURETOR HOLD (Ref # 25) | 92037-1242 | 1 |
| SCREW-PAN-CROS,6X35,B (Ref # 26) | 220C0635 | 1 |
| SEAL,EXHAUST PIPE (Ref # 27) | 92093-1012 | 1 |