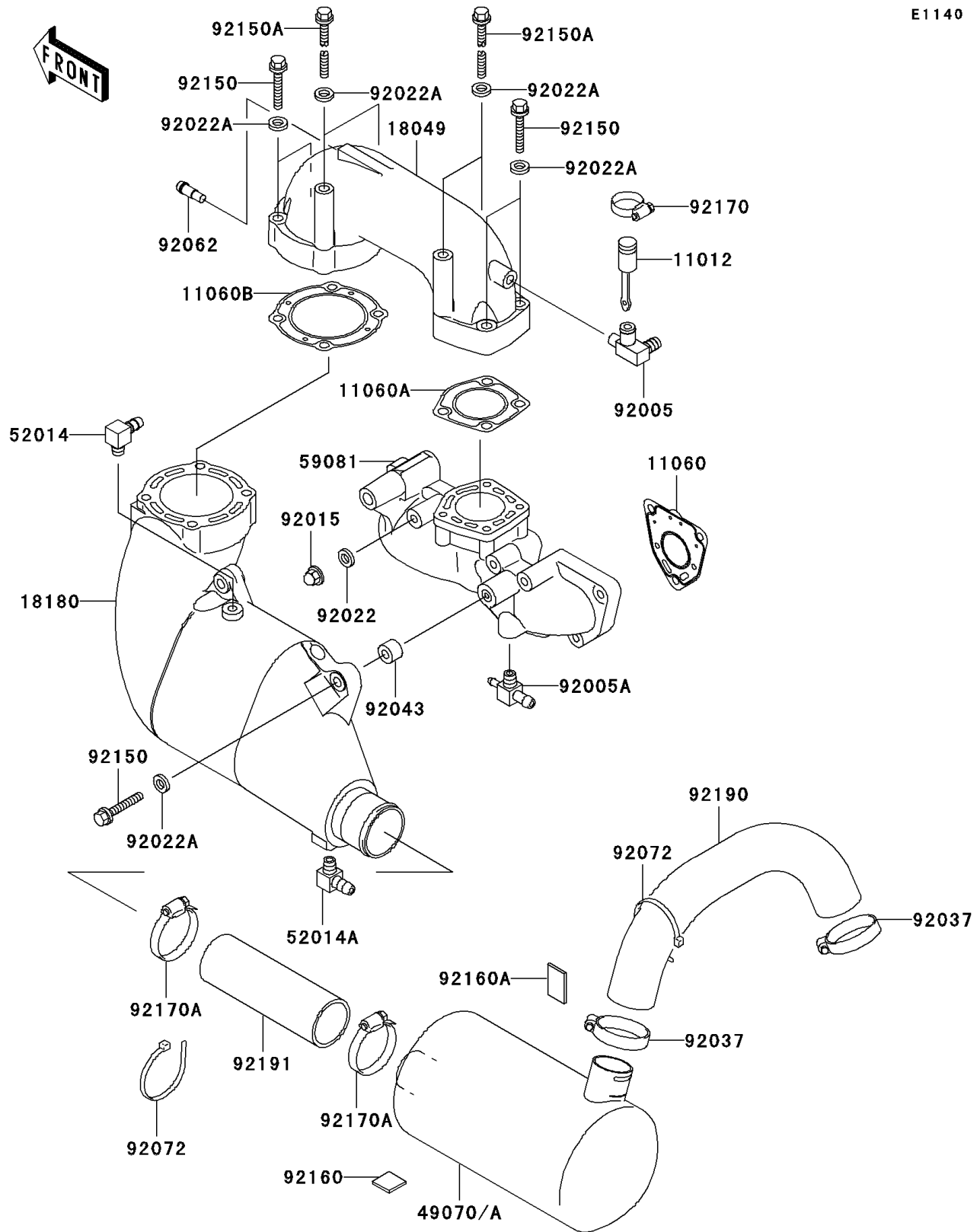


## 1998 1100 STX PARTS DIAGRAM

Muffler(s)

E1140



## 1998 1100 STX PARTS LIST

Muffler(s)

| ITEM NAME                             | PART NUMBER | QUANTITY |
|---------------------------------------|-------------|----------|
| CAP (Ref # 11012)                     | 11012-3757  | 1        |
| GASKET (Ref # 11060)                  | 11060-3767  | 1        |
| GASKET,MANIFOLD (Ref # 11060A)        | 11060-3768  | 1        |
| GASKET,MUFFLER (Ref # 11060B)         | 11060-3769  | 1        |
| PIPE-EXHAUST (Ref # 18049)            | 18049-3764  | 1        |
| BODY-MUFFLER (Ref # 18180)            | 18180-3714  | 1        |
| MUFFLER-COMP (Ref # 49070)            | 49070-3725  | 1        |
| ELBOW (Ref # 52014)                   | 52014-3709  | 1        |
| ELBOW (Ref # 52014A)                  | 52014-3711  | 1        |
| MANIFOLD-EXHAUST (Ref # 59081)        | 59081-3726  | 1        |
| FITTING (Ref # 92005)                 | 92005-3715  | 1        |
| FITTING (Ref # 92005A)                | 92005-3720  | 1        |
| NUT,CAP,8MM (Ref # 92015)             | 92015-1371  | 1        |
| WASHER,8.2X18X1.5 (Ref # 92022)       | 92022-1964  | 1        |
| WASHER,10.2X20X1.5 (Ref # 92022A)     | 92022-3742  | 1        |
| CLAMP (Ref # 92037)                   | 92037-3738  | 1        |
| PIN,11X14X12.3 (Ref # 92043)          | 92043-1266  | 1        |
| NOZZLE (Ref # 92062)                  | 92062-3705  | 1        |
| BAND,L=368.3 (Ref # 92072)            | 92072-3808  | 1        |
| BOLT,10X50 (Ref # 92150)              | 92150-3819  | 1        |
| BOLT,10X125 (Ref # 92150A)            | 92150-3825  | 1        |
| DAMPER,25X25 (Ref # 92160)            | 92160-3864  | 1        |
| DAMPER,40X25 (Ref # 92160A)           | 92160-3865  | 1        |
| CLAMP (Ref # 92170)                   | 92170-3729  | 1        |
| CLAMP (Ref # 92170A)                  | 92170-3754  | 1        |
| TUBE,MUFFLER-TAILPIPE (Ref # 92190)   | 92190-3938  | 1        |
| TUBE,CHAMBER-WATER PUMP (Ref # 92191) | 92191-3786  | 1        |