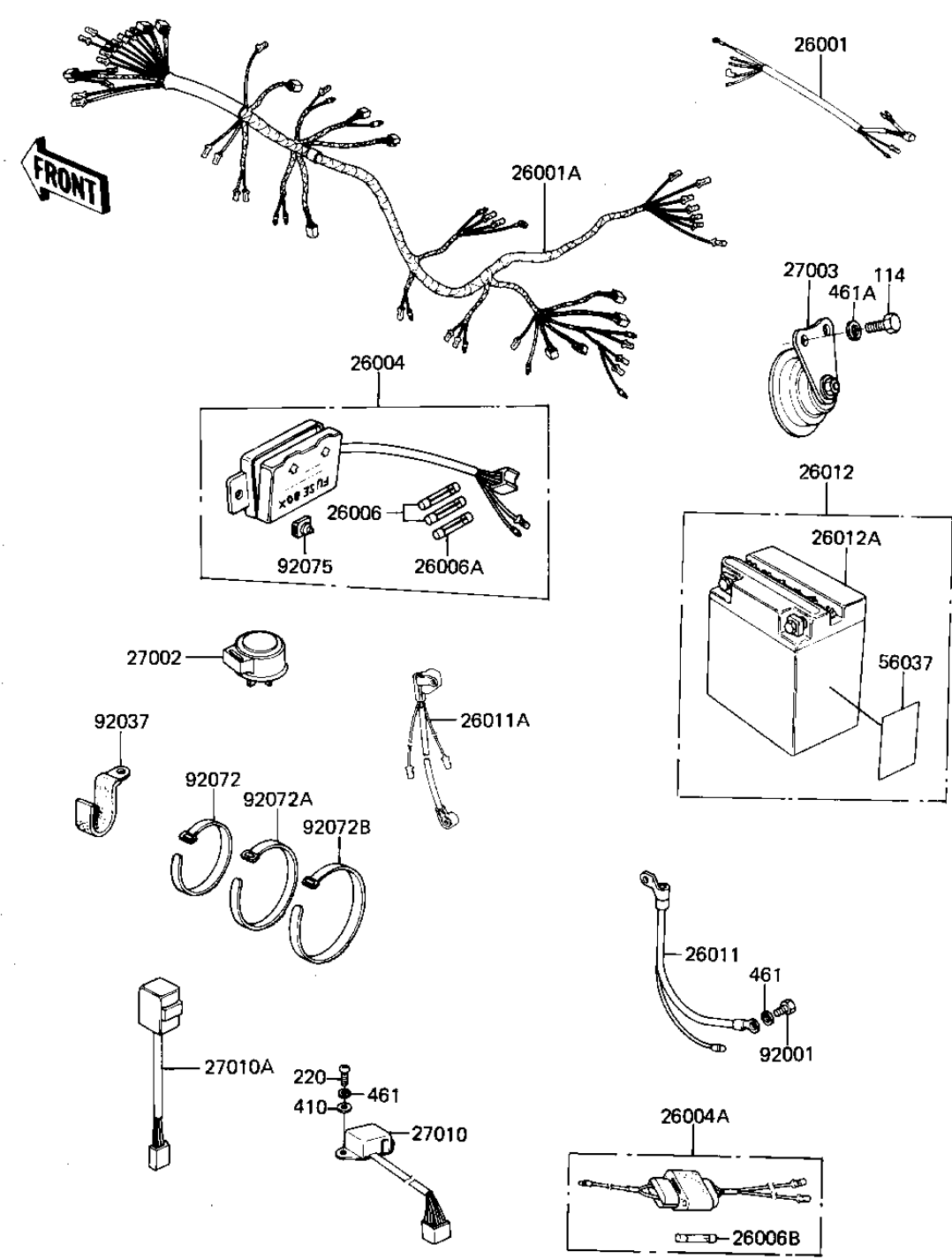


# 1981 GPz PARTS DIAGRAM

## CHASSIS ELECTRICAL EQUIPMENT

F2760-0059



# 1981 GPz PARTS LIST

## CHASSIS ELECTRICAL EQUIPMENT

ITEM NAME	PART NUMBER	QUANTITY
HARNESS,SUB (Ref # 26001)	26001-1202	1
HARNESS,MAIN (Ref # 26001A)	26001-1261	1
FUSE ASSY (Ref # 26004)	26004-1002	1
FUSE-ASSY,ACCESSORY (Ref # 26004A)	26004-1014	1
FUSE 10A (Ref # 26006)	26006-003	3
FUSE-20A (Ref # 26006A)	26006-005	2
FUSE,10A,L=30M/M (Ref # 26006B)	26006-1002	3
WIRE,LEAD,BATTERY(-) (Ref # 26011)	26011-1032	1
WIRE-LEAD,BATTERY (Ref # 26011A)	26011-1156	1
RELAY-TURN SIGNAL (Ref # 27002)	27002-011	1
HORN (Ref # 27003)	27003-1014	1
SWITCH,RESERVE LIGHTI (Ref # 27010)	27010-1024	1
SWITCH,OUTAGE,INDICTR (Ref # 27010A)	28019-001	1
BOLT,HEX HEAD,6MM (Ref # 92001)	92001-137	1
CLAMP,WIRING HARNESS (Ref # 92037)	92037-1069	3
BAND,SHORT (Ref # 92072)	92072-030	2
BAND,MIDDLE (Ref # 92072A)	92072-031	2
BAND,LONG (Ref # 92072B)	92072-032	2
DAMPER RUBBER,FUSE (Ref # 92075)	92075-279	1
BOLT-SMALL-UPSET,8X16 (Ref # 114)	115G0816	2
SCREW PAN HEAD 6X20 (Ref # 220)	220B0620	2
WASHER PLAIN 6MM (Ref # 410)	410B0600	2
WASHER SPRING 6MM (Ref # 461)	461F0600	3
WASHER SPRING 8MM (Ref # 461A)	461F0800	2